

# Product Datasheet

## BPTF/FALZ Antibody NB100-41418

Unit Size: 0.1 ml

Store at 4C. Do not freeze.

[www.novusbio.com](http://www.novusbio.com)



[technical@novusbio.com](mailto:technical@novusbio.com)

### Publications: 4

Protocols, Publications, Related Products, Reviews, Research Tools and Images at:  
[www.novusbio.com/NB100-41418](http://www.novusbio.com/NB100-41418)

Updated 9/9/2025 v.20.1

Earn rewards for product  
reviews and publications.

Submit a publication at [www.novusbio.com/publications](http://www.novusbio.com/publications)

Submit a review at [www.novusbio.com/reviews/destination/NB100-41418](http://www.novusbio.com/reviews/destination/NB100-41418)



**NB100-41418****BPTF/FALZ Antibody**

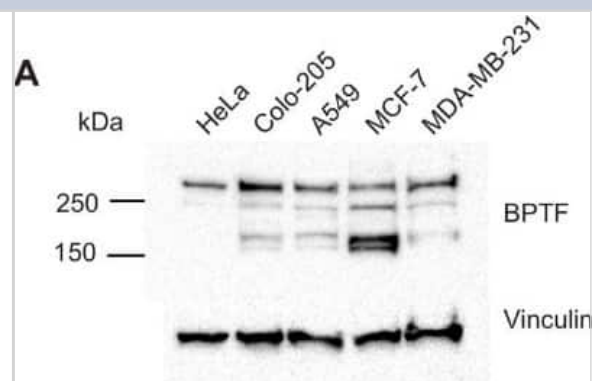
<b>Product Information</b>	
<b>Unit Size</b>	0.1 ml
<b>Concentration</b>	0.2 mg/ml
<b>Storage</b>	Store at 4C. Do not freeze.
<b>Clonality</b>	Polyclonal
<b>Preservative</b>	0.09% Sodium Azide
<b>Isotype</b>	IgG
<b>Purity</b>	Immunogen affinity purified
<b>Buffer</b>	TBS and 0.1% BSA

<b>Product Description</b>	
<b>Description</b>	Novus Biologicals Rabbit BPTF/FALZ Antibody (NB100-41418) is a polyclonal antibody validated for use in IHC, WB and IP. Anti-BPTF/FALZ Antibody: Cited in 4 publications. All Novus Biologicals antibodies are covered by our 100% guarantee.
<b>Host</b>	Rabbit
<b>Gene ID</b>	2186
<b>Gene Symbol</b>	BPTF
<b>Species</b>	Human
<b>Immunogen</b>	The immunogen recognized by this antibody maps to a region between residue 1350 and 1400 of human Fetal Alzheimer Antigen (Bromodomain and PHD Domain Transcription Factor) using the numbering given in entry NP_872579.2 (GeneID 2186).

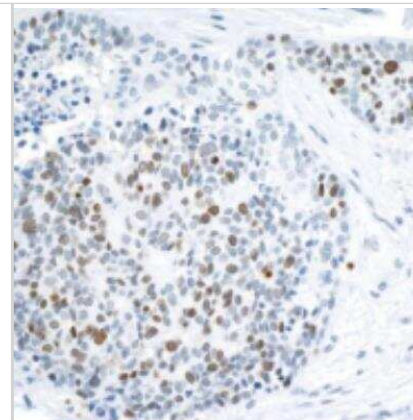
<b>Product Application Details</b>	
<b>Applications</b>	Western Blot, Immunohistochemistry-Paraffin, Immunohistochemistry, Immunoprecipitation
<b>Recommended Dilutions</b>	Western Blot 1:2000-1:10000, Immunohistochemistry 1:200- 1:1000, Immunoprecipitation 2-10 ug/mg lysate, Immunohistochemistry-Paraffin 1:200-1:1000
<b>Application Notes</b>	Epitope retrieval with Tris-EDTA pH9.0 is recommended for FFPE tissue sections.

**Images**

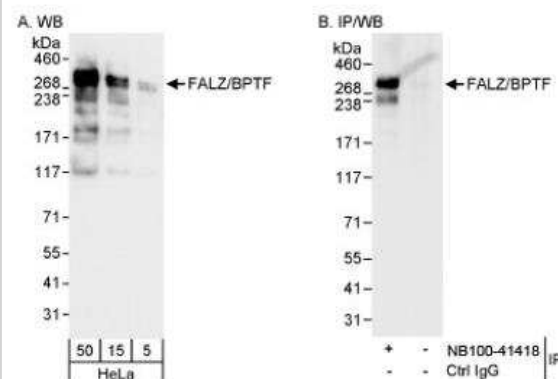
Western Blot: BPTF/FALZ Antibody [NB100-41418] - Reactivity of BPTF/FALZ antibodies with lysates from human cancer cells. Cell line-specific patterns were observed, with bands of the same mobility being detected across lines and detected with independent antibodies. The findings suggest the occurrence of multiple BPTF/FALZ-related protein species in human cancer cells. A representative western blot is shown. Image collected and cropped by CiteAb from the following publication ([//pubmed.ncbi.nlm.nih.gov/31498079/](https://pubmed.ncbi.nlm.nih.gov/31498079/)) licensed under a CC-BY license.



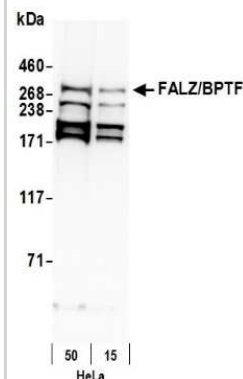
Immunohistochemistry-Paraffin: BPTF/FALZ Antibody [NB100-41418] - Section of human lung carcinoma. Antibody: Affinity purified rabbit antiFALZ/BPTF used at a dilution of 1:1,000 (0.2ug/ml). Detection: DAB



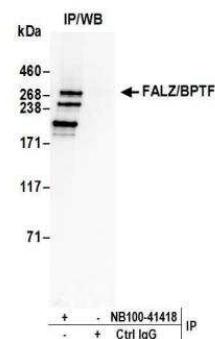
Western Blot: BPTF/FALZ Antibody [NB100-41418] - Whole cell lysate (5, 15 and 50 mcg for WB; 1 mg for IP, 20% of IP loaded) from HeLa cells. NB100-41418 used for WB at 0.04 mcg/ml (A) and 0.1 mcg/ml (B) and used for IP at 3 mcg/mg lysate (B).



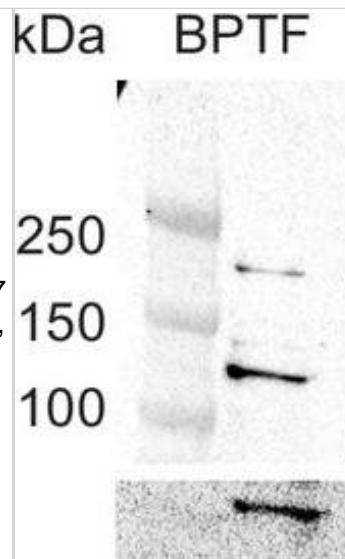
Western Blot: BPTF/FALZ Antibody [NB100-41418] - Detection of Human FALZ/BPTF by Western Blot. Samples: Whole cell lysate (15 and 50 ug) from HeLa cells prepared using NETN lysis buffer. Antibody: Affinity purified rabbit anti-FALZ/BPTF antibody NB100-41418 used for WB at 0.04 ug/ml. Detection: Chemiluminescence with an exposure time of 30 seconds.



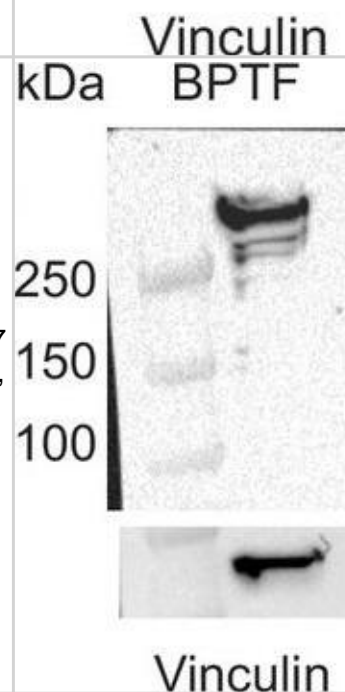
Immunoprecipitation: BPTF/FALZ Antibody [NB100-41418] - Detection of human FALZ/BPTF by western blot of immunoprecipitates. Samples: Whole cell lysate (0.5 or 1.0 mg per IP reaction; 20% of IP loaded) from HeLa cells prepared using NETN lysis buffer. Antibodies: Affinity purified rabbit anti-FALZ/BPTF antibody NB100-41418 used for IP at 6 ug per reaction. For blotting immunoprecipitated FALZ/BPTF, NB100-41418 was used at 0.1 ug/ml. Detection: Chemiluminescence with an exposure time of 30 seconds.



Western Blot: BPTF/FALZ Antibody [NB100-41418] - Identification of alternative BPTF species in human cancer cells.(A) Reactivity of anti-BPTF antibodies with lysates from human cancer cells. Cell line-specific patterns were observed, with bands of the same mobility being detected across lines & detected with independent antibodies. The findings suggest the occurrence of multiple BPTF-related protein species in human cancer cells. A representative western blot is shown. (B) Gel bands selected for BPTF Mass Spectrometry identification according to the localization of the BPTF signal detected by western blotting in MCF-7 cells. (Left, NP-40 lysis buffer, gel bands A1 & A2; Right, Laemmli buffer, B1 & B2). The detection of low molecular weight species upon direct cell lysis in Laemmli buffer strongly supports the notion that the findings do not result from artifactual proteolysis. (C) Sequence coverage of BPTF protein. Peptides identified by LC-MS/MS are highlighted in color. (D) BPTF peptide intensity (arbitrary units) calculated by MaxQuant in the gel bands A1, A2/B1, B2. Image collected & cropped by CiteAb from the following publication (<https://pubmed.ncbi.nlm.nih.gov/31498079>), licensed under a CC-BY license. Not internally tested by Novus Biologicals.



Western Blot: BPTF/FALZ Antibody [NB100-41418] - Identification of alternative BPTF species in human cancer cells.(A) Reactivity of anti-BPTF antibodies with lysates from human cancer cells. Cell line-specific patterns were observed, with bands of the same mobility being detected across lines & detected with independent antibodies. The findings suggest the occurrence of multiple BPTF-related protein species in human cancer cells. A representative western blot is shown. (B) Gel bands selected for BPTF Mass Spectrometry identification according to the localization of the BPTF signal detected by western blotting in MCF-7 cells. (Left, NP-40 lysis buffer, gel bands A1 & A2; Right, Laemmli buffer, B1 & B2). The detection of low molecular weight species upon direct cell lysis in Laemmli buffer strongly supports the notion that the findings do not result from artifactual proteolysis. (C) Sequence coverage of BPTF protein. Peptides identified by LC-MS/MS are highlighted in color. (D) BPTF peptide intensity (arbitrary units) calculated by MaxQuant in the gel bands A1, A2/B1, B2. Image collected & cropped by CiteAb from the following publication (<https://pubmed.ncbi.nlm.nih.gov/31498079>), licensed under a CC-BY license. Not internally tested by Novus Biologicals.



## Publications

D'Alesio C, Punzi S, Cicalese A et al. RNAi screens identify CHD4 as an essential gene in breast cancer growth *Oncotarget* 2016-12-06 [PMID: 27779108] (Human)

Oppikofer M, Bai T, et al. Expansion of the ISWI chromatin remodeler family with new active complexes. *EMBO Rep* 2017-10-01 [PMID: 28801535] (WB, Human)

Xu W, Long L, Zhao Y et al. Evolution of Yin and Yang isoforms of a chromatin remodeling subunit precedes the creation of two genes *Elife* 2019-09-09 [PMID: 31498079] (WB, Human)

Goldman JA, Garlick JD, Kingston RE. Chromatin remodeling by imitation switch (ISWI) class ATP-dependent remodelers is stimulated by histone variant H2A.Z. *J Biol Chem* 2010-02-12 [PMID: 19940112] (Human)



### **Novus Biologicals USA**

10730 E. Briarwood Avenue  
Centennial, CO 80112  
USA  
Phone: 303.730.1950  
Toll Free: 1.888.506.6887  
Fax: 303.730.1966  
nb-customerservice@bio-techne.com

### **Bio-Techne Canada**

21 Canmotor Ave  
Toronto, ON M8Z 4E6  
Canada  
Phone: 905.827.6400  
Toll Free: 855.668.8722  
Fax: 905.827.6402  
canada.inquires@bio-techne.com

### **Bio-Techne Ltd**

19 Barton Lane  
Abingdon Science Park  
Abingdon, OX14 3NB, United Kingdom  
Phone: (44) (0) 1235 529449  
Free Phone: 0800 37 34 15  
Fax: (44) (0) 1235 533420  
info.EMEA@bio-techne.com

### **General Contact Information**

www.novusbio.com  
Technical Support: nb-technical@bio-techne.com  
Orders: nb-customerservice@bio-techne.com  
General: novus@novusbio.com

### **Products Related to NB100-41418**

---

NBP2-33376H	Blue Marker Antibody (6F4-F6) [HRP]
HAF008	Goat anti-Rabbit IgG Secondary Antibody [HRP]
NB7160	Goat anti-Rabbit IgG (H+L) Secondary Antibody [HRP]
NBP2-24891	Rabbit IgG Isotype Control

---

### **Limitations**

This product is for research use only and is not approved for use in humans or in clinical diagnosis. Primary Antibodies are guaranteed for 1 year from date of receipt.

For more information on our 100% guarantee, please visit [www.novusbio.com/guarantee](http://www.novusbio.com/guarantee)

Earn gift cards/discounts by submitting a review: [www.novusbio.com/reviews/submit/NB100-41418](http://www.novusbio.com/reviews/submit/NB100-41418)

Earn gift cards/discounts by submitting a publication using this product:  
[www.novusbio.com/publications](http://www.novusbio.com/publications)

