

Product Datasheet

NET1 Antibody NB100-40800

Unit Size: 0.1 mg

Store at -20C. Avoid freeze-thaw cycles.

www.novusbio.com



technical@novusbio.com

Publications: 1

Protocols, Publications, Related Products, Reviews, Research Tools and Images at:
www.novusbio.com/NB100-40800

Updated 9/9/2025 v.20.1

Earn rewards for product
reviews and publications.

Submit a publication at www.novusbio.com/publications

Submit a review at www.novusbio.com/reviews/destination/NB100-40800



NB100-40800

NET1 Antibody

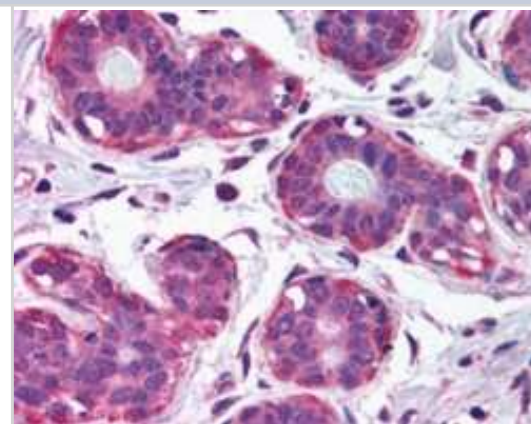
Product Information	
Unit Size	0.1 mg
Concentration	0.5 mg/ml
Storage	Store at -20C. Avoid freeze-thaw cycles.
Clonality	Polyclonal
Preservative	0.02% Sodium Azide
Isotype	IgG
Purity	Immunogen affinity purified
Buffer	Tris saline (20 mM Tris pH 7.3, 150 mM NaCl), 0.5% BSA

Product Description	
Description	Novus Biologicals Goat NET1 Antibody (NB100-40800) is a polyclonal antibody validated for use in IHC and ELISA. Anti-NET1 Antibody: Cited in 1 publication. All Novus Biologicals antibodies are covered by our 100% guarantee.
Host	Goat
Gene ID	10276
Gene Symbol	NET1
Species	Human
Specificity/Sensitivity	This antibody is expected to recognize both reported isoforms (NP_001040625.1 and NP_005854.2).
Immunogen	Peptide with sequence C-DKLEYLDEKQRDPR corresponding to internal region according to NP_001040625.1.

Product Application Details	
Applications	Immunohistochemistry-Paraffin, Immunohistochemistry, Peptide ELISA
Recommended Dilutions	Immunohistochemistry 2.5 ug/ml, Immunohistochemistry-Paraffin 2.5 ug/ml, Peptide ELISA Detection limit 1:16000
Application Notes	WB: Preliminary experiments gave an approx. 80-90 kDa band double band in human placenta lysates after 0.3 ug/ml antibody staining. Please note that currently we cannot find an explanation in the literature for the band we observe given the calculated size of 67.7 kDa band according to NP_001040625.1. The 80-90 kDa band was successfully blocked by incubation with the immunizing peptide. IHC-P: Human breast shows cytoplasm staining of myoepithelial cells of ducts.

Images

Immunohistochemistry-Paraffin: NET1 Antibody [NB100-40800] - (2.5ug/ml) staining of paraffin embedded Human Breast. Steamed antigen retrieval with citrate buffer pH 6, AP-staining.



Publications

Qin H, Carr HS, Wu X et al. Characterization of the biochemical and transforming properties of the neuroepithelial transforming protein 1. J Biol Chem 2005-03-04 [PMID: 15611121]





Novus Biologicals USA

10730 E. Briarwood Avenue
Centennial, CO 80112
USA
Phone: 303.730.1950
Toll Free: 1.888.506.6887
Fax: 303.730.1966
nb-customerservice@bio-techne.com

Bio-Techne Canada

21 Canmotor Ave
Toronto, ON M8Z 4E6
Canada
Phone: 905.827.6400
Toll Free: 855.668.8722
Fax: 905.827.6402
canada.inquires@bio-techne.com

Bio-Techne Ltd

19 Barton Lane
Abingdon Science Park
Abingdon, OX14 3NB, United Kingdom
Phone: (44) (0) 1235 529449
Free Phone: 0800 37 34 15
Fax: (44) (0) 1235 533420
info.EMEA@bio-techne.com

General Contact Information

www.novusbio.com
Technical Support: nb-technical@bio-techne.com
Orders: nb-customerservice@bio-techne.com
General: novus@novusbio.com

Products Related to NB100-40800

NBL1-13592	NET1 Overexpression Lysate
HAF017	Rabbit anti-Goat IgG Secondary Antibody [HRP (Horseradish Peroxidase)]
HAF109	Donkey anti-Goat IgG Secondary Antibody [HRP (Horseradish Peroxidase)]
NB410-28088-1mg	Goat IgG Isotype Control

Limitations

This product is for research use only and is not approved for use in humans or in clinical diagnosis. Primary Antibodies are guaranteed for 1 year from date of receipt.

For more information on our 100% guarantee, please visit www.novusbio.com/guarantee

Earn gift cards/discounts by submitting a review: www.novusbio.com/reviews/submit/NB100-40800

Earn gift cards/discounts by submitting a publication using this product:
www.novusbio.com/publications



