

# Product Datasheet

## Rad21 Antibody (CM110-2C10) - BSA Free NB100-386

Unit Size: 0.1 ml

Aliquot and store at -20C or -80C. Avoid freeze-thaw cycles.

[www.novusbio.com](http://www.novusbio.com)



[technical@novusbio.com](mailto:technical@novusbio.com)

### Publications: 1

Protocols, Publications, Related Products, Reviews, Research Tools and Images at:  
[www.novusbio.com/NB100-386](http://www.novusbio.com/NB100-386)

Updated 9/9/2025 v.20.1

Earn rewards for product  
reviews and publications.

Submit a publication at [www.novusbio.com/publications](http://www.novusbio.com/publications)

Submit a review at [www.novusbio.com/reviews/destination/NB100-386](http://www.novusbio.com/reviews/destination/NB100-386)



**NB100-386**

Rad21 Antibody (CM110-2C10) - BSA Free

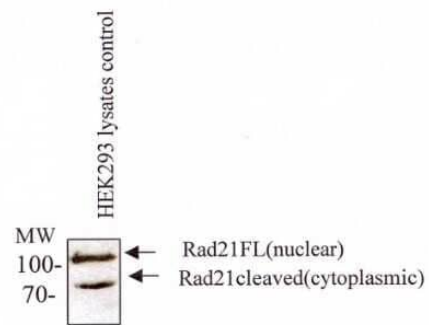
Product Information	
Unit Size	0.1 ml
Concentration	1 mg/ml
Storage	Aliquot and store at -20C or -80C. Avoid freeze-thaw cycles.
Clonality	Monoclonal
Clone	CM110-2C10
Preservative	0.1% Sodium Azide
Isotype	IgG1 Kappa
Purity	Protein G purified
Buffer	PBS

Product Description	
Description	Novus Biologicals Mouse Rad21 Antibody (CM110-2C10) - BSA Free (NB100-386) is a monoclonal antibody validated for use in WB and Simple Western. Anti-Rad21 Antibody: Cited in 1 publication. All Novus Biologicals antibodies are covered by our 100% guarantee.
Host	Mouse
Gene ID	5885
Gene Symbol	RAD21
Species	Human, Mouse
Specificity/Sensitivity	NB100-386 is specific for both the nuclear hRad21 protein and the cleaved cytoplasmic hRad21 protein.
Immunogen	An N-terminal fusion protein of the C-terminal fragment of Scc1 subunit human cohesin (amino acids 544-631 of hRad21).

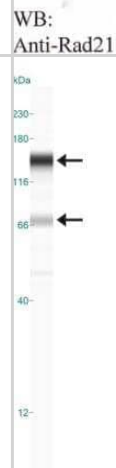
Product Application Details	
Applications	Western Blot, Simple Western
Recommended Dilutions	Western Blot 1:500 (ECL), Simple Western 1:50
Application Notes	<p>This Rad21 (CM110-2C10) antibody can be used in Western blot, where two bands are seen. The full-length Rad21 is seen around 130 kDa, while the cleaved Rad21 is seen around 70 kDa.</p> <p>In Simple Western only 10 - 15 uL of the recommended dilution is used per data point.</p> <p>See <a href="#">Simple Western Antibody Database</a> for Simple Western validation: Tested in Hek293 lysate 0.5 mg/mL, separated by Size, antibody dilution of 1:50, apparent MW was 72 kDa. Separated by Size-Wes, Sally Sue/Peggy Sue.</p>

## Images

Western Blot: Rad21 Antibody (CM110-2C10) [NB100-386] - Western blot with monoclonal anti-Rad21 (NB100-386) in HEK293 lysates.



Simple Western: Rad21 Antibody (CM110-2C10) [NB100-386] - Simple Western lane view shows a specific band for Rad21 in 0.5 mg/ml of Hek293 lysate. This experiment was performed under reducing conditions using the 12-230 kDa separation system.



## Publications

Schiapparelli LM, Xie Y, Sharma P et al. Activity-Induced Cortical Glutamatergic Neuron Nascent Proteins The Journal of neuroscience : the official journal of the Society for Neuroscience 2022-10-19 [PMID: 36261270] (WB, Mouse)

## Procedures

### Western Blot protocol for Rad21 Antibody (NB100-386)

Rad21 Antibody (CM110-2C10):

1. Load protein on gel (ie: ~8 ug of non-transfected, control HeLa extract) and run.
2. Transfer protein to nitrocellulose (Schleicher&Schuell, cat# BA83).
3. Block the membrane with 5% milk for 30 minutes at room temperature.
4. Incubate the membrane with anti-cohesin [cat# NB 100-386] (1:500), overnight at 4C or 2 h at room temperature. Milk or PBS-T are good for this dilution.
5. Wash the membrane 3 times, 10 minutes per wash in PBS with 0.1% Tween-20 (PBS-T).
6. Incubate with secondary antibody for 30 minutes at room temperature. Use milk in PBS-T as a diluent.
7. Rinse the membrane 2 times with deionized water and place in an ECL working solution.
8. Expose to the film.





### **Novus Biologicals USA**

10730 E. Briarwood Avenue  
Centennial, CO 80112  
USA  
Phone: 303.730.1950  
Toll Free: 1.888.506.6887  
Fax: 303.730.1966  
nb-customerservice@bio-techne.com

### **Bio-Techne Canada**

21 Canmotor Ave  
Toronto, ON M8Z 4E6  
Canada  
Phone: 905.827.6400  
Toll Free: 855.668.8722  
Fax: 905.827.6402  
canada.inquires@bio-techne.com

### **Bio-Techne Ltd**

19 Barton Lane  
Abingdon Science Park  
Abingdon, OX14 3NB, United Kingdom  
Phone: (44) (0) 1235 529449  
Free Phone: 0800 37 34 15  
Fax: (44) (0) 1235 533420  
info.EMEA@bio-techne.com

### **General Contact Information**

www.novusbio.com  
Technical Support: nb-technical@bio-techne.com  
Orders: nb-customerservice@bio-techne.com  
General: novus@novusbio.com

### **Products Related to NB100-386**

---

NB800-PC1	HeLa Whole Cell Lysate
NBP2-33376H	Blue Marker Antibody (6F4-F6) [HRP]
HAF007	Goat anti-Mouse IgG Secondary Antibody [HRP]
NB7539	Goat anti-Mouse IgG (H+L) Secondary Antibody [HRP]
NBP1-43319-0.5mg	Mouse IgG1 Kappa Isotype Control (P3.6.2.8.1)

---

### **Limitations**

This product is for research use only and is not approved for use in humans or in clinical diagnosis. Primary Antibodies are guaranteed for 1 year from date of receipt.

For more information on our 100% guarantee, please visit [www.novusbio.com/guarantee](http://www.novusbio.com/guarantee)

Earn gift cards/discounts by submitting a review: [www.novusbio.com/reviews/submit/NB100-386](http://www.novusbio.com/reviews/submit/NB100-386)

Earn gift cards/discounts by submitting a publication using this product:  
[www.novusbio.com/publications](http://www.novusbio.com/publications)

