

Product Datasheet

SMC2 Antibody - BSA Free

NB100-372

Unit Size: 100 ul

Store at 4C. Do not freeze.

www.novusbio.com



technical@novusbio.com

Protocols, Publications, Related Products, Reviews, Research Tools and Images at:
www.novusbio.com/NB100-372

Updated 9/9/2025 v.20.1

Earn rewards for product
reviews and publications.

Submit a publication at www.novusbio.com/publications

Submit a review at www.novusbio.com/reviews/destination/NB100-372



NB100-372

SMC2 Antibody - BSA Free

Product Information	
Unit Size	100 ul
Concentration	1.0 mg/ml
Storage	Store at 4C. Do not freeze.
Clonality	Polyclonal
Preservative	0.09% Sodium Azide
Isotype	IgG
Purity	Immunogen affinity purified
Buffer	Tris-Citrate/Phosphate (pH 7.0 - 8.0)

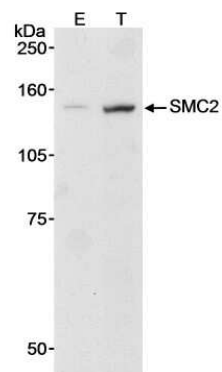
Product Description	
Description	Novus Biologicals Rabbit SMC2 Antibody - BSA Free (NB100-372) is a polyclonal antibody validated for use in WB. All Novus Biologicals antibodies are covered by our 100% guarantee.
Host	Rabbit
Gene ID	10592
Gene Symbol	SMC2
Species	Human
Immunogen	The immunogen recognized by this antibody maps to a region between residues 950 and 1000 of human Structural Maintenance of Chromosomes 2 using the numbering given in entry NP_006435.1 (GeneID 10592).

Product Application Details	
Applications	Western Blot
Recommended Dilutions	Western Blot 1:1
Application Notes	This antibody may be used for Western Blot, where a band at ~155 kDa is seen, representing SMC2 protein. The investigator should determine the optimal working dilution for a specific application.

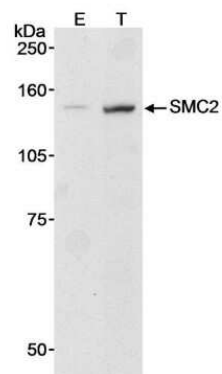


Images

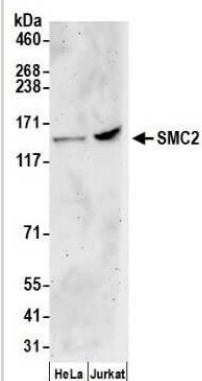
Western Blot: SMC2 Antibody [NB100-372] - Samples : Whole cell lysate (90 ug) from mock transfected (E) or SMC2 transfected (T) HEK293T cells. Antibody : Affinity purified rabbit anti-SMC2 used at 0.1 ug/ml. Detection : Chemiluminescence with a 10 minute exposure.



Western Blot: SMC2 Antibody [NB100-372] - Whole cell lysate (90 ug) from mock transfected (E) or SMC2 transfected (T) HEK293T cells. Antibody used at 0.1 ug/ml.



Western Blot: SMC2 Antibody [NB100-372] - Samples: Whole cell lysate (50 ug) from HeLa and Jurkat cells prepared using NETN lysis buffer. Antibodies: Affinity purified rabbit anti-SMC2 antibody used for WB at 0.1 ug/ml. Detection: Chemiluminescence with an exposure time of 3 minutes.





Novus Biologicals USA

10730 E. Briarwood Avenue
Centennial, CO 80112
USA

Phone: 303.730.1950

Toll Free: 1.888.506.6887

Fax: 303.730.1966

nb-customerservice@bio-techne.com

Bio-Techne Canada

21 Canmotor Ave
Toronto, ON M8Z 4E6
Canada

Phone: 905.827.6400

Toll Free: 855.668.8722

Fax: 905.827.6402

canada.inquires@bio-techne.com

Bio-Techne Ltd

19 Barton Lane
Abingdon Science Park
Abingdon, OX14 3NB, United Kingdom

Phone: (44) (0) 1235 529449

Free Phone: 0800 37 34 15

Fax: (44) (0) 1235 533420

info.EMEA@bio-techne.com

General Contact Information

www.novusbio.com

Technical Support: nb-technical@bio-techne.com

Orders: nb-customerservice@bio-techne.com

General: novus@novusbio.com

Products Related to NB100-372

NBP2-33376H	Blue Marker Antibody (6F4-F6) [HRP]
HAF008	Goat anti-Rabbit IgG Secondary Antibody [HRP]
NB7160	Goat anti-Rabbit IgG (H+L) Secondary Antibody [HRP]
NBP2-24891	Rabbit IgG Isotype Control

Limitations

This product is for research use only and is not approved for use in humans or in clinical diagnosis. Primary Antibodies are guaranteed for 1 year from date of receipt.

For more information on our 100% guarantee, please visit www.novusbio.com/guarantee

Earn gift cards/discounts by submitting a review: www.novusbio.com/reviews/submit/NB100-372

Earn gift cards/discounts by submitting a publication using this product:
www.novusbio.com/publications

