

# Product Datasheet

## FEN-1 Antibody - BSA Free

### NB100-321

Unit Size: 100 ul

Store at 4C. Do not freeze.

[www.novusbio.com](http://www.novusbio.com)



[technical@novusbio.com](mailto:technical@novusbio.com)

#### Publications: 6

Protocols, Publications, Related Products, Reviews, Research Tools and Images at:  
[www.novusbio.com/NB100-321](http://www.novusbio.com/NB100-321)

Updated 9/9/2025 v.20.1

Earn rewards for product  
reviews and publications.

Submit a publication at [www.novusbio.com/publications](http://www.novusbio.com/publications)

Submit a review at [www.novusbio.com/reviews/destination/NB100-321](http://www.novusbio.com/reviews/destination/NB100-321)



**NB100-321**

FEN-1 Antibody - BSA Free

Product Information	
Unit Size	100 ul
Concentration	1.0 mg/ml
Storage	Store at 4C. Do not freeze.
Clonality	Polyclonal
Preservative	0.09% Sodium Azide
Isotype	IgG
Purity	Immunogen affinity purified
Buffer	Tris-Citrate/Phosphate (pH 7.0 - 8.0)

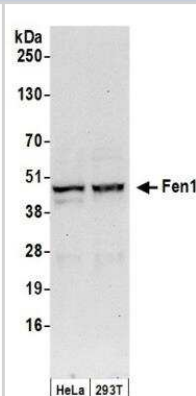
Product Description	
Description	Novus Biologicals Rabbit FEN-1 Antibody - BSA Free (NB100-321) is a polyclonal antibody validated for use in IHC, WB and IP. Anti-FEN-1 Antibody: Cited in 6 publications. All Novus Biologicals antibodies are covered by our 100% guarantee.
Host	Rabbit
Gene ID	2237
Gene Symbol	FEN1
Species	Human
Immunogen	The immunogen recognized by this antibody maps to a region between residues 250 and 300 of human Flap Structure Endonuclease 1 using the numbering given in entry NP_004102.1 (GeneID 2237).

Product Application Details	
Applications	Western Blot, Immunohistochemistry-Paraffin, Immunohistochemistry, Immunoprecipitation
Recommended Dilutions	Western Blot 1:2000 - 1:10000, Immunohistochemistry, Immunoprecipitation 2 - 10 ug/mg lysate, Immunohistochemistry-Paraffin 1:200- 1:1000
Application Notes	Epitope retrieval with citrate buffer pH6.0 is recommended for FFPE tissue sections. 16-18 hour incubation is recommended

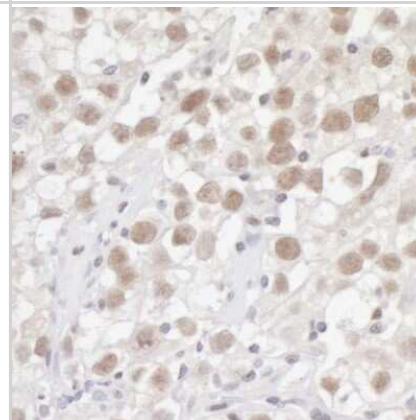


## Images

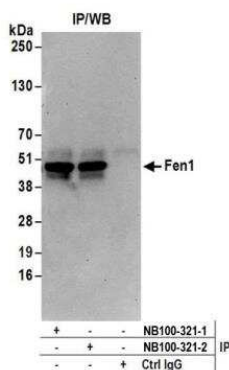
Western Blot: FEN-1 Antibody [NB100-321] - Detection of Human Fen1 by Western Blot. Samples: Whole cell lysate (50 ug) from HeLa and 293T cells prepared using NETN lysis buffer. Antibodies: Affinity purified rabbit anti-Fen1 antibody NB100-321 used for WB at 0.1 ug/ml. Detection: Chemiluminescence with an exposure time of 30 seconds.



Immunohistochemistry-Paraffin: FEN-1 Antibody [NB100-321] - FFPE section of human testicular seminoma. Antibody: Affinity purified rabbit anti-Fen1 (NB100-321) used at a dilution of 1:1000 (1ug/ml). Detection: DAB



Immunoprecipitation: FEN-1 Antibody [NB100-321] - Detection of human Fen1 by western blot of immunoprecipitates. Samples: Whole cell lysate (0.5 or 1.0 mg per IP reaction; 20% of IP loaded) from HeLa cells prepared using NETN lysis buffer. Antibodies: Affinity purified rabbit anti-Fen1 antibody NB100-321 (lot NB100-321-2) used for IP at 6 ug per reaction. Fen1 was also immunoprecipitated by a previous lot of this antibody (lot NB100-321-1). For blotting immunoprecipitated Fen1, NB100-321 was used at 1 ug/ml. Detection: Chemiluminescence with an exposure time of 30 seconds.



## Publications

Moreli JB, Santos JH, Lorenzon-Ojea AR et al. Hyperglycemia Differentially Affects Maternal and Fetal DNA Integrity and DNA Damage Response *Int. J. Biol. Sci.* 2016-03-29 [PMID: 27019630]

Verdun RE, Karlseder J. The DNA damage machinery and homologous recombination pathway act consecutively to protect human telomeres. *Cell* 2006-11-17 [PMID: 17110331]

Holen T, Moe SE, Sorbo JG et al. Tolerated wobble mutations in siRNAs decrease specificity, but can enhance activity in vivo. *Nucleic Acids Res* 2005-08-01 [PMID: 16113241]

Liu P, Qian L, Sung JS et al. Removal of oxidative DNA damage via FEN1-dependent long-patch base excision repair in human cell mitochondria. *Mol Cell Biol* 2008-08-01 [PMID: 18541666]

Farina A, Shin J-H, Kim D-H et al. Studies with the Human Cohesin Establishment Factor, ChIR1: ASSOCIATION OF ChIR1 WITH Ctf18-RFC Fen1. *J Biol Chem*;283(30):20925-20936. 2008-01-01 [PMID: 18499658]

Yan T, Seo Y, Kinsella TJ et al. Differential cellular responses to prolonged LDR-IR in MLH1-proficient and MLH1-deficient colorectal cancer HCT116 cells. *Clin Cancer Res* 2009-11-01 [PMID: 19861440]



### **Novus Biologicals USA**

10730 E. Briarwood Avenue  
Centennial, CO 80112  
USA  
Phone: 303.730.1950  
Toll Free: 1.888.506.6887  
Fax: 303.730.1966  
nb-customerservice@bio-techne.com

### **Bio-Techne Canada**

21 Canmotor Ave  
Toronto, ON M8Z 4E6  
Canada  
Phone: 905.827.6400  
Toll Free: 855.668.8722  
Fax: 905.827.6402  
canada.inquires@bio-techne.com

### **Bio-Techne Ltd**

19 Barton Lane  
Abingdon Science Park  
Abingdon, OX14 3NB, United Kingdom  
Phone: (44) (0) 1235 529449  
Free Phone: 0800 37 34 15  
Fax: (44) (0) 1235 533420  
info.EMEA@bio-techne.com

### **General Contact Information**

www.novusbio.com  
Technical Support: nb-technical@bio-techne.com  
Orders: nb-customerservice@bio-techne.com  
General: novus@novusbio.com

### **Products Related to NB100-321**

---

NB800-PC1	HeLa Whole Cell Lysate
NBP2-33376H	Blue Marker Antibody (6F4-F6) [HRP]
HAF008	Goat anti-Rabbit IgG Secondary Antibody [HRP]
NB7160	Goat anti-Rabbit IgG (H+L) Secondary Antibody [HRP]
NBP2-24891	Rabbit IgG Isotype Control

---

### **Limitations**

This product is for research use only and is not approved for use in humans or in clinical diagnosis. Primary Antibodies are guaranteed for 1 year from date of receipt.

For more information on our 100% guarantee, please visit [www.novusbio.com/guarantee](http://www.novusbio.com/guarantee)

Earn gift cards/discounts by submitting a review: [www.novusbio.com/reviews/submit/NB100-321](http://www.novusbio.com/reviews/submit/NB100-321)

Earn gift cards/discounts by submitting a publication using this product:  
[www.novusbio.com/publications](http://www.novusbio.com/publications)

