

Product Datasheet

CRABP2 Antibody NB100-2590

Unit Size: 0.1 ml

Store at 4C. Do not freeze.

www.novusbio.com



technical@novusbio.com

Publications: 2

Protocols, Publications, Related Products, Reviews, Research Tools and Images at:
www.novusbio.com/NB100-2590

Updated 9/9/2025 v.20.1

Earn rewards for product
reviews and publications.

Submit a publication at www.novusbio.com/publications

Submit a review at www.novusbio.com/reviews/destination/NB100-2590



NB100-2590

CRABP2 Antibody

Product Information	
Unit Size	0.1 ml
Concentration	0.2 mg/ml
Storage	Store at 4C. Do not freeze.
Clonality	Polyclonal
Preservative	0.09% Sodium Azide
Isotype	IgG
Purity	Immunogen affinity purified
Buffer	TBS and 0.1% BSA
Target Molecular Weight	16 kDa

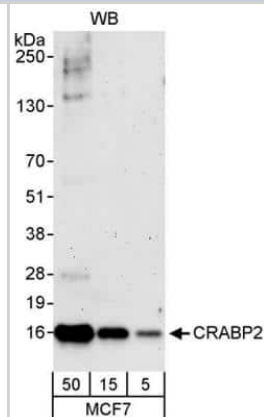
Product Description	
Description	Novus Biologicals Rabbit CRABP2 Antibody (NB100-2590) is a polyclonal antibody validated for use in IHC and WB. Anti-CRABP2 Antibody: Cited in 2 publications. All Novus Biologicals antibodies are covered by our 100% guarantee.
Host	Rabbit
Gene ID	1382
Gene Symbol	CRABP2
Species	Human
Immunogen	The immunogen recognized by this antibody maps to a region between residue 80 and the C-terminus (residue 138) of human Cellular Retinoic Acid Binding Protein 2 using the numbering given in entry NP_001869.1 (GeneID 1382).

Product Application Details	
Applications	Western Blot, Immunohistochemistry-Paraffin, Immunohistochemistry, Immunoprecipitation (Negative)
Recommended Dilutions	Western Blot 1:2000-1:10000, Immunohistochemistry 1:200-1:1000, Immunohistochemistry-Paraffin 1:200-1:1000, Immunoprecipitation (Negative)
Application Notes	Prepare working dilution immediately before use. Epitope retrieval with citrate buffer pH6.0 is recommended for FFPE tissue sections.

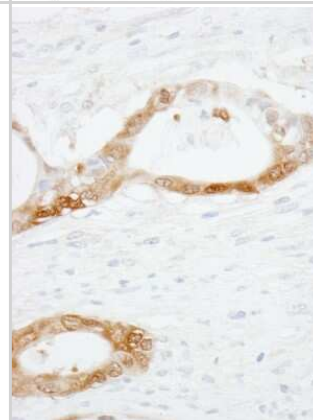


Images

Western Blot: CRABP2 Antibody [NB100-2590] - Whole cell lysate (5, 15 and 50 ug) from MCF7 cells. Antibody used at 0.04 ug/ml.



Immunohistochemistry-Paraffin: CRABP2 Antibody [NB100-2590] - Section of human prostate carcinoma. Antibody: Affinity purified rabbit anti-CRABP2 used at a dilution of 1:1,000 (1ug/ml). Detection: DAB



Publications

Design, Synthesis and Biological Evaluation of Nuclear Receptor-degradation Inducers. Itoh Y, Kitaguchi R, Ishikawa M et al. *Bioorg Med Chem* [PMID: 22014751] (WB, Human)

Itoh Y, Ishikawa M, Kitaguchi R et al. Development of Target Protein-Selective Degradation Inducer for Protein Knockdown. *Bioorganic & Medicinal Chemistry*. 2011-01-01 [PMID: 21515062]



Novus Biologicals USA

10730 E. Briarwood Avenue
Centennial, CO 80112
USA
Phone: 303.730.1950
Toll Free: 1.888.506.6887
Fax: 303.730.1966
nb-customerservice@bio-techne.com

Bio-Techne Canada

21 Canmotor Ave
Toronto, ON M8Z 4E6
Canada
Phone: 905.827.6400
Toll Free: 855.668.8722
Fax: 905.827.6402
canada.inquires@bio-techne.com

Bio-Techne Ltd

19 Barton Lane
Abingdon Science Park
Abingdon, OX14 3NB, United Kingdom
Phone: (44) (0) 1235 529449
Free Phone: 0800 37 34 15
Fax: (44) (0) 1235 533420
info.EMEA@bio-techne.com

General Contact Information

www.novusbio.com
Technical Support: nb-technical@bio-techne.com
Orders: nb-customerservice@bio-techne.com
General: novus@novusbio.com

Products Related to NB100-2590

NBL1-09458	CRABP2 Overexpression Lysate
NBP2-33376H	Blue Marker Antibody (6F4-F6) [HRP]
HAF008	Goat anti-Rabbit IgG Secondary Antibody [HRP]
NB7160	Goat anti-Rabbit IgG (H+L) Secondary Antibody [HRP]
NBP2-24891	Rabbit IgG Isotype Control

Limitations

This product is for research use only and is not approved for use in humans or in clinical diagnosis. Primary Antibodies are guaranteed for 1 year from date of receipt.

For more information on our 100% guarantee, please visit www.novusbio.com/guarantee

Earn gift cards/discounts by submitting a review: www.novusbio.com/reviews/submit/NB100-2590

Earn gift cards/discounts by submitting a publication using this product:
www.novusbio.com/publications

