

# Product Datasheet

## ERO1L Antibody - Azide Free NB100-2525

Unit Size: 0.1 ml

Aliquot and store at -20C or -80C. Avoid freeze-thaw cycles.

[www.novusbio.com](http://www.novusbio.com)



[technical@novusbio.com](mailto:technical@novusbio.com)

**Reviews: 1 Publications: 14**

Protocols, Publications, Related Products, Reviews, Research Tools and Images at:  
[www.novusbio.com/NB100-2525](http://www.novusbio.com/NB100-2525)

Updated 9/9/2025 v.20.1

**Earn rewards for product  
reviews and publications.**

Submit a publication at [www.novusbio.com/publications](http://www.novusbio.com/publications)

Submit a review at [www.novusbio.com/reviews/destination/NB100-2525](http://www.novusbio.com/reviews/destination/NB100-2525)



**NB100-2525**

ERO1L Antibody - Azide Free

Product Information	
Unit Size	0.1 ml
Concentration	2 mg/ml
Storage	Aliquot and store at -20C or -80C. Avoid freeze-thaw cycles.
Clonality	Polyclonal
Preservative	No Preservative
Isotype	IgG
Purity	Immunogen affinity purified
Buffer	PBS and 1.0% BSA
Target Molecular Weight	57 kDa

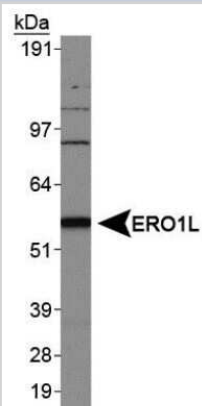
Product Description	
Description	Novus Biologicals Rabbit ERO1L Antibody - Azide Free (NB100-2525) is a polyclonal antibody validated for use in WB and ICC/IF. Anti-ERO1L Antibody: Cited in 14 publications. All Novus Biologicals antibodies are covered by our 100% guarantee.
Host	Rabbit
Gene ID	30001
Gene Symbol	ERO1A
Species	Human, Mouse, Rat
Reactivity Notes	Use in Rat reported in scientific literature (PMID:34512174).
Immunogen	A synthetic peptide made to the N-terminal region of human ERO1L [UniProt Q96HE7]

Product Application Details	
Applications	Western Blot, Immunocytochemistry/ Immunofluorescence
Recommended Dilutions	Western Blot 1:1000-1:2000, Immunocytochemistry/ Immunofluorescence 1:50-1:200
Application Notes	This ERO1L antibody is useful for Western Blot, where a band ~57 kDa is observed. Depending on the samples used ERO1L can also appear as a doublet which is believed to represent the oxidized and reduced forms of the protein. The observed molecular weight of the protein may vary from the listed predicted molecular weight due to post translational modifications, post translation cleavages, relative charges, and other experimental factors.

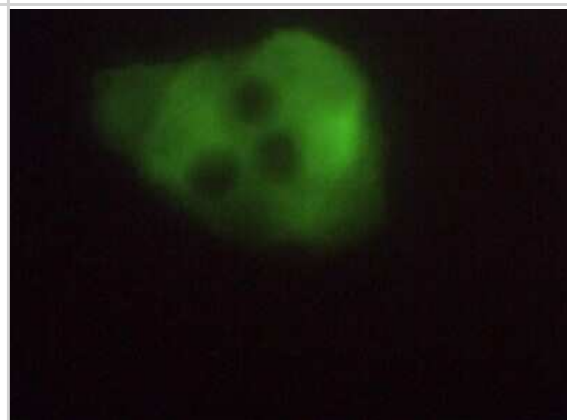


## Images

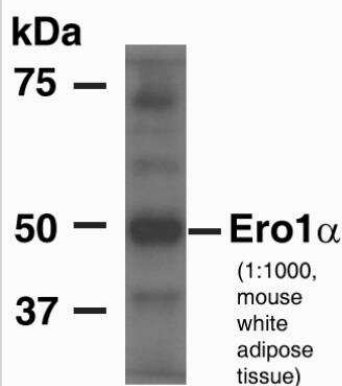
Western Blot: ERO1L Antibody [NB100-2525] - Analysis of ERO1L in 293 cell lysates.



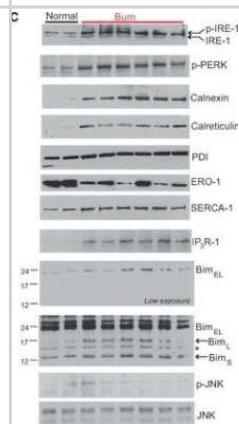
Immunocytochemistry/Immunofluorescence: ERO1L Antibody [NB100-2525] - Detection of ERO1L in Hela cells.



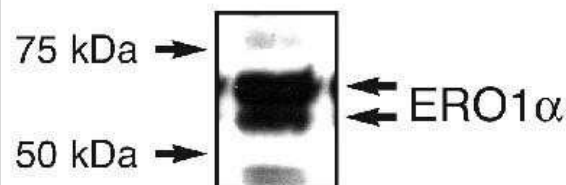
Western Blot: ERO1L Antibody [NB100-2525] - Analysis of ERO1L in mouse white adipose tissue using anti-ERO1L antibody. Image from verified customer review.



Western Blot: ERO1L Antibody [NB100-2525] - Thermal injury induces hepatic endoplasmic reticulum (ER) stress response in vivo. Western blots of ER stress proteins and ER calcium handling/chaperone proteins and/or their phosphoprotein levels in liver samples isolated from two control and six burned animals 24 hrs after burn injury. All Western blots are from the same animals. \*Non-specific band. Image collected and cropped by CiteAb from the following publication (<https://doi.wiley.com/10.1111/j.1582-4934.2008.00644.x>), licensed under a CC-BY license.



Western Blot: ERO1L Antibody [NB100-2525] - Detection of ERO1 alpha in an endogenous 293T cell lysate.



## Publications

Albassam H, Ladin DA, Elhassanny A et al. Apoptosis mechanisms induced by 15d-PMJ2 in HCT116 colon cancer cells: insights into CHOP10/TRB3/Akt signaling *Frontiers in pharmacology* 2023-11-02 [PMID: 38026967]

Hazari Y, Urra H, Garcia Lopez VA et al. The endoplasmic reticulum stress sensor IRE1 regulates collagen secretion through the enforcement of the proteostasis factor P4HB/PDIA1 contributing to liver damage and fibrosis *bioRxiv : the preprint server for biology* 2023-05-02 [PMID: 37205565] (WB, Mouse)

Guidarelli A, Spina A, Fiorani M et al. Arsenite enhances ERO1 $\alpha$  expression via ryanodine receptor dependent and independent mechanisms *Environmental toxicology and pharmacology* 2023-02-11 [PMID: 36781116] (WB, Human)

### Details:

Arsenite-induced ERO1 $\alpha$  expression in U937 cell

Liu Y, Hu R, Shen H et al. Endophilin A2-mediated alleviation of endoplasmic reticulum stress-induced cardiac injury involves the suppression of ERO1 alpha /IP3R signaling pathway *International journal of biological sciences* 2021-08-26 [PMID: 34512174] (WB, Rat)

Park MJ, Iyer S, Xue X et al. HIF1-alpha Regulates Acinar Cell Function and Response to Injury in Mouse Pancreas. *Gastroenterology* 2018-05-01 [PMID: 29409830]

Gao XH, Krokowski D, Guan BJ et al. Quantitative H2S-mediated protein sulfhydration reveals metabolic reprogramming during the integrated stress response. *Elife* 2015-11-23 [PMID: 26595448] (WB)

Woehlbier U, Colombo A, Saaranen MJ et al. ALS-linked protein disulfide isomerase variants cause motor dysfunction. *EMBO J.* 2016-02-11 [PMID: 26869642] (WB, Mouse)

Fu Z, Lofqvist CA, Shao Z et al. Dietary omega-3 polyunsaturated fatty acids decrease retinal neovascularization by adipose-endoplasmic reticulum stress reduction to increase adiponectin. *Am J Clin Nutr* 2015-04-01 [PMID: 25833984] (WB)

Kukita K, Tamura Y, Tanaka T et al. Cancer-Associated Oxidase ERO1-alpha Regulates the Expression of MHC Class I Molecule via Oxidative Folding *J. Immunol.* 2015-05-15 [PMID: 25870246] (WB, Human)

Matus S, Lopez E, Valenzuela V et al. Functional Contribution of the Transcription Factor ATF4 to the Pathogenesis of Amyotrophic Lateral Sclerosis. *PLoS One* 2013-07-18 [PMID: 23874395] (WB, Mouse)

Jeschke MG, Gauglitz GG, Song J et al. Calcium and ER stress mediate hepatic apoptosis after burn injury. *J Cell Mol Med* 2009-08-01 [PMID: 20141609] (WB, Rat)

Hammer E, Bien S, Salazar MG et al. Proteomic analysis of doxorubicin-induced changes in the proteome of HepG2 cells combining 2-D DIGE and LC-MS/MS approaches. *Proteomics* 2010-01-01 [PMID: 20017144] (WB, Human)

More publications at <http://www.novusbio.com/NB100-2525>



### **Novus Biologicals USA**

10730 E. Briarwood Avenue  
Centennial, CO 80112  
USA  
Phone: 303.730.1950  
Toll Free: 1.888.506.6887  
Fax: 303.730.1966  
nb-customerservice@bio-techne.com

### **Bio-Techne Canada**

21 Canmotor Ave  
Toronto, ON M8Z 4E6  
Canada  
Phone: 905.827.6400  
Toll Free: 855.668.8722  
Fax: 905.827.6402  
canada.inquires@bio-techne.com

### **Bio-Techne Ltd**

19 Barton Lane  
Abingdon Science Park  
Abingdon, OX14 3NB, United Kingdom  
Phone: (44) (0) 1235 529449  
Free Phone: 0800 37 34 15  
Fax: (44) (0) 1235 533420  
info.EMEA@bio-techne.com

### **General Contact Information**

www.novusbio.com  
Technical Support: nb-technical@bio-techne.com  
Orders: nb-customerservice@bio-techne.com  
General: novus@novusbio.com

### **Products Related to NB100-2525**

---

NBP2-33376H	Blue Marker Antibody (6F4-F6) [HRP]
HAF008	Goat anti-Rabbit IgG Secondary Antibody [HRP]
NB7160	Goat anti-Rabbit IgG (H+L) Secondary Antibody [HRP]
NBP2-24891	Rabbit IgG Isotype Control

---

### **Limitations**

This product is for research use only and is not approved for use in humans or in clinical diagnosis. Primary Antibodies are guaranteed for 1 year from date of receipt.

For more information on our 100% guarantee, please visit [www.novusbio.com/guarantee](http://www.novusbio.com/guarantee)

Earn gift cards/discounts by submitting a review: [www.novusbio.com/reviews/submit/NB100-2525](http://www.novusbio.com/reviews/submit/NB100-2525)

Earn gift cards/discounts by submitting a publication using this product:  
[www.novusbio.com/publications](http://www.novusbio.com/publications)

