

# Product Datasheet

## Claspin Antibody - BSA Free

### NB100-247

Unit Size: 100 ul

Store at 4C. Do not freeze.

[www.novusbio.com](http://www.novusbio.com)



[technical@novusbio.com](mailto:technical@novusbio.com)

**Publications: 13**

Protocols, Publications, Related Products, Reviews, Research Tools and Images at:  
[www.novusbio.com/NB100-247](http://www.novusbio.com/NB100-247)

Updated 9/9/2025 v.20.1

Earn rewards for product  
reviews and publications.

Submit a publication at [www.novusbio.com/publications](http://www.novusbio.com/publications)

Submit a review at [www.novusbio.com/reviews/destination/NB100-247](http://www.novusbio.com/reviews/destination/NB100-247)



**NB100-247**

Claspin Antibody - BSA Free

| Product Information |                                       |
|---------------------|---------------------------------------|
| Unit Size           | 100 ul                                |
| Concentration       | 1.0 mg/ml                             |
| Storage             | Store at 4C. Do not freeze.           |
| Clonality           | Polyclonal                            |
| Preservative        | 0.09% Sodium Azide                    |
| Isotype             | IgG                                   |
| Purity              | Immunogen affinity purified           |
| Buffer              | Tris-Citrate/Phosphate (pH 7.0 - 8.0) |

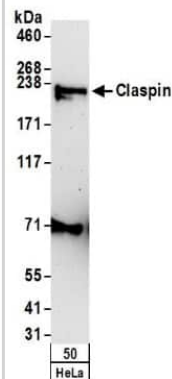
| Product Description |   |
|---------------------|---|
| Description         | Novus Biologicals Rabbit Claspin Antibody - BSA Free (NB100-247) is a polyclonal antibody validated for use in IHC, WB and IP. Anti-Claspin Antibody: Cited in 13 publications. All Novus Biologicals antibodies are covered by our 100% guarantee. |
| Host                | Rabbit  |
| Gene ID             | 63967   |
| Gene Symbol         | CLSPN   |
| Species             | Human   |
| Reactivity Notes    | Gorilla (100%).   |
| Immunogen           | The immunogen recognized by this antibody maps to a region between residues 450 and 500 of human Claspin using the numbering given in entry AAG24515.1 (GeneID 63967).  |

| Product Application Details |  |
|-----------------------------|--|
| Applications                | Western Blot, Immunohistochemistry-Paraffin, Immunohistochemistry, Immunoprecipitation   |
| Recommended Dilutions       | Western Blot 1:5000-1:20000, Immunohistochemistry 1:500 - 1:2000, Immunoprecipitation 1 - 5 ug/mg lysate, Immunohistochemistry-Paraffin 1:500 - 1:2000 |
| Application Notes           | Epitope retrieval with citrate buffer pH6.0 is recommended for FFPE tissue sections.   |

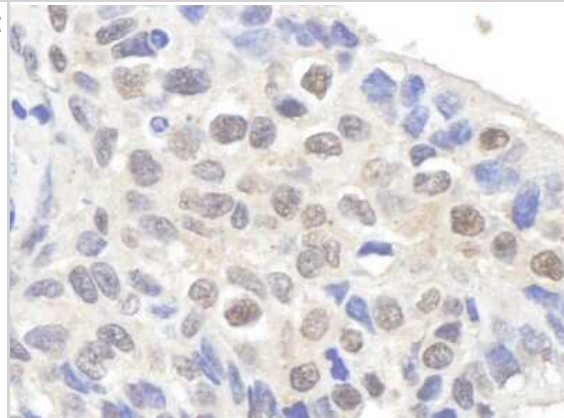


## Images

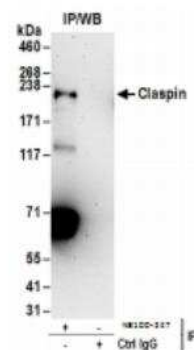
Western Blot: Claspin Antibody [NB100-247] - Detection of Human Claspin by Western Blot. Samples: Whole cell lysate (50 ug) from HeLa cells. Antibodies: Affinity purified rabbit anti-Claspin antibody NB100-247 used for WB at 1 ug/ml. Detection: Chemiluminescence with an exposure time of 3 minutes.



Immunohistochemistry-Paraffin: Claspin Antibody [NB100-247] - Sample: FFPE section of human lung carcinoma. Antibody: Affinity purified rabbit anti-Claspin used at a dilution of 1:1,000 (1ug/ml). Detection: DAB



Immunoprecipitation: Claspin Antibody [NB100-247] - Whole cell lysate (1 mg for IP; 20% of IP loaded) from HeLa cells. Antibodies: Affinity purified rabbit anti-Claspin antibody used for IP at 6 ug/mg lysate. For blotting immunoprecipitated Claspin, was used at 1 ug/ml. Detection: Chemiluminescence with an exposure time of 3 minutes.



## Publications

Doldi V, Lecchi M, Ljevar S et al. Potential of the Stromal Matricellular Protein Periostin as a Biomarker to Improve Risk Assessment in Prostate Cancer International journal of molecular sciences 2022-07-20 [PMID: 35887333]

Buchsbaum S, Morris C, Bochard V, Jalinot P. Human INT6 interacts with MCM7 and regulates its stability during S phase of the cell cycle. Oncogene 2007-08-02 [PMID: 17310990] (Human)

Speroni J, Federico MB, Mansilla SF et al. Kinase-independent function of checkpoint kinase 1 (Chk1) in the replication of damaged DNA. Proc Natl Acad Sci U S A 2012-05-01 [PMID: 22529391]

Guervilly JH, Renaud E, Takata M et al. USP1 deubiquitinase maintains phosphorylated CHK1 by limiting its DDB1-dependent degradation. Hum Mol Genet 2011-06-01 [PMID: 21389083]

Despras E, Daboussi F, Hyrien O et al. ATR/Chk1 pathway is essential for resumption of DNA synthesis and cell survival in UV-irradiated XP variant cells. Hum Mol Genet 2010-05-01 [PMID: 20123862]

Yang XH, Shiotani B, Classon M et al. Chk1 and Claspin potentiate PCNA ubiquitination. Genes Dev 2008-05-01 [PMID: 18451105]

Guervilly JH, Mace-Aime G, Rosselli F et al. Loss of CHK1 function impedes DNA damage-induced FANCD2 monoubiquitination but normalizes the abnormal G2 arrest in Fanconi anemia. Hum Mol Genet 2008-03-01 [PMID: 18029388]

Wang X, Zou L, Lu T et al. Rad17 phosphorylation is required for claspin recruitment and Chk1 activation in response to replication stress. Mol Cell 2006-08-01 [PMID: 16885023]

MailN, Bekker-Jensen S, Bartek J et al. Destruction of Claspin by SCFbetaTrCP restrains Chk1 activation and facilitates recovery from genotoxic stress. Mol Cell 2006-08-01 [PMID: 16885021]

Bennett LN, Clarke PR. Regulation of Claspin degradation by the ubiquitin-proteasome pathway during the cell cycle and in response to ATR-dependent checkpoint activation. FEBS Lett 2006-07-01 [PMID: 16828751]

Clarke CA, Bennett LN, Clarke PR et al. Cleavage of claspin by caspase-7 during apoptosis inhibits the Chk1 pathway. J Biol Chem 2005-10-01 [PMID: 16123041]

Ge Li, RT et al. Phosphatase type 2A-dependent -independent pathways for ATR phosphorylation of Chk1. J Biol Chem 282(10): 7287-7298. 2007-01-01 [PMID: 17210576]

More publications at <http://www.novusbio.com/NB100-247>



### **Novus Biologicals USA**

10730 E. Briarwood Avenue  
Centennial, CO 80112  
USA  
Phone: 303.730.1950  
Toll Free: 1.888.506.6887  
Fax: 303.730.1966  
nb-customerservice@bio-techne.com

### **Bio-Techne Canada**

21 Canmotor Ave  
Toronto, ON M8Z 4E6  
Canada  
Phone: 905.827.6400  
Toll Free: 855.668.8722  
Fax: 905.827.6402  
canada.inquires@bio-techne.com

### **Bio-Techne Ltd**

19 Barton Lane  
Abingdon Science Park  
Abingdon, OX14 3NB, United Kingdom  
Phone: (44) (0) 1235 529449  
Free Phone: 0800 37 34 15  
Fax: (44) (0) 1235 533420  
info.EMEA@bio-techne.com

### **General Contact Information**

www.novusbio.com  
Technical Support: nb-technical@bio-techne.com  
Orders: nb-customerservice@bio-techne.com  
General: novus@novusbio.com

### **Products Related to NB100-247**

---

|             |   |
|-------------|---|
| NB800-PC1   | HeLa Whole Cell Lysate                              |
| NBP2-33376H | Blue Marker Antibody (6F4-F6) [HRP]                 |
| HAF008      | Goat anti-Rabbit IgG Secondary Antibody [HRP]       |
| NB7160      | Goat anti-Rabbit IgG (H+L) Secondary Antibody [HRP] |
| NBP2-24891  | Rabbit IgG Isotype Control                          |

---

### **Limitations**

This product is for research use only and is not approved for use in humans or in clinical diagnosis. Primary Antibodies are guaranteed for 1 year from date of receipt.

For more information on our 100% guarantee, please visit [www.novusbio.com/guarantee](http://www.novusbio.com/guarantee)

Earn gift cards/discounts by submitting a review: [www.novusbio.com/reviews/submit/NB100-247](http://www.novusbio.com/reviews/submit/NB100-247)

Earn gift cards/discounts by submitting a publication using this product:  
[www.novusbio.com/publications](http://www.novusbio.com/publications)

