

Product Datasheet

Claspin Antibody - BSA Free

NB100-246

Unit Size: 100 ul

Store at 4C. Do not freeze.

www.novusbio.com



technical@novusbio.com

Publications: 4

Protocols, Publications, Related Products, Reviews, Research Tools and Images at:
www.novusbio.com/NB100-246

Updated 9/9/2025 v.20.1

Earn rewards for product
reviews and publications.

Submit a publication at www.novusbio.com/publications

Submit a review at www.novusbio.com/reviews/destination/NB100-246



NB100-246

Claspin Antibody - BSA Free

Product Information	
Unit Size	100 ul
Concentration	1.0 mg/ml
Storage	Store at 4C. Do not freeze.
Clonality	Polyclonal
Preservative	0.09% Sodium Azide
Isotype	IgG
Purity	Immunogen affinity purified
Buffer	Tris-Citrate/Phosphate (pH 7.0 - 8.0)

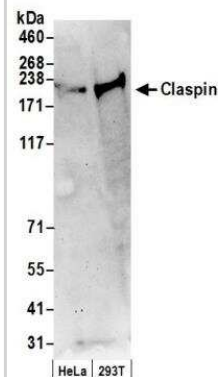
Product Description	
Description	Novus Biologicals Rabbit Claspin Antibody - BSA Free (NB100-246) is a polyclonal antibody validated for use in WB and IP. Anti-Claspin Antibody: Cited in 4 publications. All Novus Biologicals antibodies are covered by our 100% guarantee.
Host	Rabbit
Gene ID	63967
Gene Symbol	CLSPN
Species	Human
Immunogen	The immunogen recognized by this antibody maps to a region between residues 450 and 500 of human Claspin using the numbering given in entry AAG24515.1 (GeneID 63967).

Product Application Details	
Applications	Western Blot, Immunoprecipitation (Negative)
Recommended Dilutions	Western Blot 1:1000-1:5000, Immunoprecipitation (Negative)
Application Notes	By Western blot, this antibody recognizes bands around 175 kDa representing Claspin. Not suitable for Immunoprecipitation. *The investigator should determine the optimal working dilution for a specific application. **Use NB 100-247 and/or NB 100-248 for Immunoprecipitation.

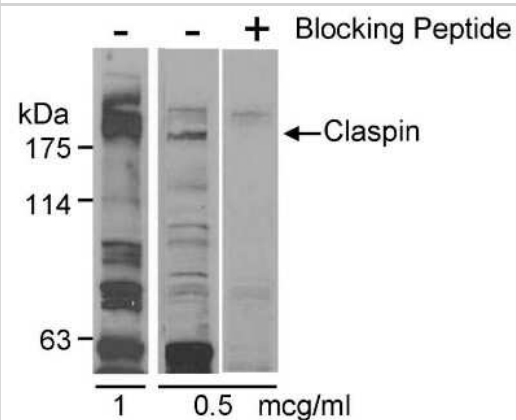


Images

Western Blot: Claspin Antibody [NB100-246] - Detection of Human Claspin by Western Blot. Samples: Whole cell lysate (50 ug) from HeLa and 293T cells prepared using NETN lysis buffer. Antibody: Affinity purified rabbit anti-Claspin antibody NB100-246 used for WB at 0.2 ug/ml. Detection: Chemiluminescence with an exposure time of 3 minutes.



Western Blot: Claspin Antibody [NB100-246] - Whole cell lysate (20 ug) from HeLa cells. Antibody used at 1 or 0.5 ug/ml with (+) or without (-) blocking peptide.



Publications

Lavik AR, McColl KS, Lemos FO et al. A non-canonical role for pyruvate kinase M2 as a functional modulator of Ca²⁺ signalling through IP3 receptors *Biochimica et biophysica acta. Molecular cell research* 2022-01-11 [PMID: 35026348] (IP, Human)

Yoshizawa-Sugata N, Masai H. Human Tim/Timeless-interacting protein, Tipin, is required for efficient progression of S phase and DNA replication checkpoint. *J Biol Chem* 2007-01-01 [PMID: 17102137]

Rodriguez-Bravo V, Guaita-Esteruelas S, Florensa R et al. Chk1- and claspin-dependent but ATR/ATM- and Rad17-independent DNA replication checkpoint response in HeLa cells. *Cancer Res* 2006-09-01 [PMID: 16951182]

Jiang K, Pereira E, Maxfield M et al. Regulation of Chk1 includes chromatin association and 14-3-3 binding following phosphorylation on Ser-345. *J Biol Chem* 2003-07-01 [PMID: 12676962]



Novus Biologicals USA

10730 E. Briarwood Avenue
Centennial, CO 80112
USA
Phone: 303.730.1950
Toll Free: 1.888.506.6887
Fax: 303.730.1966
nb-customerservice@bio-techne.com

Bio-Techne Canada

21 Canmotor Ave
Toronto, ON M8Z 4E6
Canada
Phone: 905.827.6400
Toll Free: 855.668.8722
Fax: 905.827.6402
canada.inquires@bio-techne.com

Bio-Techne Ltd

19 Barton Lane
Abingdon Science Park
Abingdon, OX14 3NB, United Kingdom
Phone: (44) (0) 1235 529449
Free Phone: 0800 37 34 15
Fax: (44) (0) 1235 533420
info.EMEA@bio-techne.com

General Contact Information

www.novusbio.com
Technical Support: nb-technical@bio-techne.com
Orders: nb-customerservice@bio-techne.com
General: novus@novusbio.com

Products Related to NB100-246

NB800-PC1	HeLa Whole Cell Lysate
NBP2-33376H	Blue Marker Antibody (6F4-F6) [HRP]
HAF008	Goat anti-Rabbit IgG Secondary Antibody [HRP]
NB7160	Goat anti-Rabbit IgG (H+L) Secondary Antibody [HRP]
NBP2-24891	Rabbit IgG Isotype Control

Limitations

This product is for research use only and is not approved for use in humans or in clinical diagnosis. Primary Antibodies are guaranteed for 1 year from date of receipt.

For more information on our 100% guarantee, please visit www.novusbio.com/guarantee

Earn gift cards/discounts by submitting a review: www.novusbio.com/reviews/submit/NB100-246

Earn gift cards/discounts by submitting a publication using this product:

www.novusbio.com/publications

