

# Product Datasheet

## MIS12 Antibody - BSA Free

### NB100-2359

Unit Size: 100 ul

Store at 4C. Do not freeze.

[www.novusbio.com](http://www.novusbio.com)



[technical@novusbio.com](mailto:technical@novusbio.com)

#### Publications: 2

Protocols, Publications, Related Products, Reviews, Research Tools and Images at:  
[www.novusbio.com/NB100-2359](http://www.novusbio.com/NB100-2359)

Updated 9/9/2025 v.20.1

Earn rewards for product reviews and publications.

Submit a publication at [www.novusbio.com/publications](http://www.novusbio.com/publications)

Submit a review at [www.novusbio.com/reviews/destination/NB100-2359](http://www.novusbio.com/reviews/destination/NB100-2359)



**NB100-2359**

MIS12 Antibody - BSA Free

Product Information	
Unit Size	100 ul
Concentration	1.0 mg/ml
Storage	Store at 4C. Do not freeze.
Clonality	Polyclonal
Preservative	0.09% Sodium Azide
Isotype	IgG
Purity	Immunogen affinity purified
Buffer	Tris-Citrate/Phosphate (pH 7.0 - 8.0)

Product Description	
Description	Novus Biologicals Rabbit MIS12 Antibody - BSA Free (NB100-2359) is a polyclonal antibody validated for use in IHC, WB and IP. Anti-MIS12 Antibody: Cited in 2 publications. All Novus Biologicals antibodies are covered by our 100% guarantee.
Host	Rabbit
Gene ID	79003
Gene Symbol	MIS12
Species	Human
Immunogen	The immunogen recognized by this antibody maps to a region between residue 150 and the C-terminus (residue 205) of human MIS12 homolog using the numbering given in entry NP_076944.1 (GeneID 79003).

Product Application Details	
Applications	Western Blot, Immunohistochemistry, Immunoprecipitation
Recommended Dilutions	Western Blot 1:1000-1:2500, Immunohistochemistry, Immunoprecipitation 2-5 ug/mg lysate

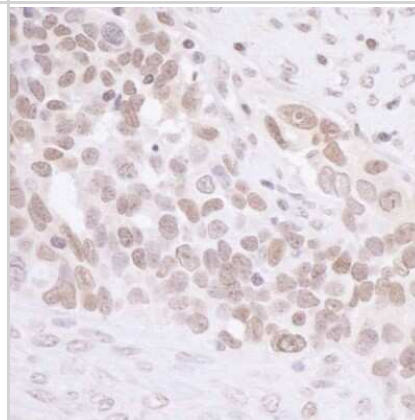


## Images

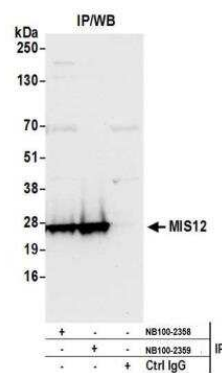
Western Blot: MIS12 Antibody [NB100-2359] - Detection of human MIS12 by western blot. Samples: Whole cell lysate (50 ug) from HeLa, HEK293T, and Jurkat cells prepared using NETN lysis buffer. Antibody: Affinity purified rabbit anti-MIS12 antibody NB100-2359 used for WB at 0.1 ug/ml. Detection: Chemiluminescence with an exposure time of 10 seconds.



Immunohistochemistry: MIS12 Antibody [NB100-2359] - Detection of human MIS12 by immunohistochemistry. Sample: FFPE section of human ovarian carcinoma. Antibody: Affinity purified rabbit anti-MIS12 (NB100-2359). Detection: DAB



Immunoprecipitation: MIS12 Antibody [NB100-2359] - Detection of human MIS12 by western blot of immunoprecipitates. Samples: Whole cell lysate (1.0 mg per IP reaction; 20% of IP loaded) from HeLa cells prepared using NETN lysis buffer. Antibodies: Affinity purified rabbit anti-MIS12 antibody NB100-2359 used for IP at 3 ug per reaction. MIS12 was also immunoprecipitated by rabbit anti-MIS12 antibody NB100-2358. For blotting immunoprecipitated MIS12, NB100-2359 was used at 1 ug/ml. Detection: Chemiluminescence with an exposure time of 30 seconds.



## Publications

Liu XS, Song B, Tang J et al. Plk1 phosphorylates Sgt1 at the kinetochores to promote timely kinetochore-microtubule attachment. *Mol Cell Biol* 2012-10-01 [PMID: 22869522]

Maehara K, Takahashi K, Saitoh S et al. CENP-A reduction induces a p53-dependent cellular senescence response to protect cells from executing defective mitoses. *Mol Cell Biol* 2010-05-01 [PMID: 20160010]



### **Novus Biologicals USA**

10730 E. Briarwood Avenue  
Centennial, CO 80112  
USA  
Phone: 303.730.1950  
Toll Free: 1.888.506.6887  
Fax: 303.730.1966  
nb-customerservice@bio-techne.com

### **Bio-Techne Canada**

21 Canmotor Ave  
Toronto, ON M8Z 4E6  
Canada  
Phone: 905.827.6400  
Toll Free: 855.668.8722  
Fax: 905.827.6402  
canada.inquires@bio-techne.com

### **Bio-Techne Ltd**

19 Barton Lane  
Abingdon Science Park  
Abingdon, OX14 3NB, United Kingdom  
Phone: (44) (0) 1235 529449  
Free Phone: 0800 37 34 15  
Fax: (44) (0) 1235 533420  
info.EMEA@bio-techne.com

### **General Contact Information**

www.novusbio.com  
Technical Support: nb-technical@bio-techne.com  
Orders: nb-customerservice@bio-techne.com  
General: novus@novusbio.com

### **Products Related to NB100-2359**

---

NBL1-13115	MIS12 Overexpression Lysate
NBP2-33376H	Blue Marker Antibody (6F4-F6) [HRP]
HAF008	Goat anti-Rabbit IgG Secondary Antibody [HRP]
NB7160	Goat anti-Rabbit IgG (H+L) Secondary Antibody [HRP]
NBP2-24891	Rabbit IgG Isotype Control

---

### **Limitations**

This product is for research use only and is not approved for use in humans or in clinical diagnosis. Primary Antibodies are guaranteed for 1 year from date of receipt.

For more information on our 100% guarantee, please visit [www.novusbio.com/guarantee](http://www.novusbio.com/guarantee)

Earn gift cards/discounts by submitting a review: [www.novusbio.com/reviews/submit/NB100-2359](http://www.novusbio.com/reviews/submit/NB100-2359)

Earn gift cards/discounts by submitting a publication using this product:  
[www.novusbio.com/publications](http://www.novusbio.com/publications)

