

Product Datasheet

RPL7 Antibody NB100-2269

Unit Size: 0.1 ml

Store at 4C. Do not freeze.

www.novusbio.com



technical@novusbio.com

Reviews: 1 **Publications: 10**

Protocols, Publications, Related Products, Reviews, Research Tools and Images at:
www.novusbio.com/NB100-2269

Updated 9/9/2025 v.20.1

**Earn rewards for product
reviews and publications.**

Submit a publication at www.novusbio.com/publications

Submit a review at www.novusbio.com/reviews/destination/NB100-2269



NB100-2269

RPL7 Antibody

Product Information	
Unit Size	0.1 ml
Concentration	0.2 mg/ml
Storage	Store at 4C. Do not freeze.
Clonality	Polyclonal
Preservative	0.09% Sodium Azide
Isotype	IgG
Purity	Immunogen affinity purified
Buffer	TBS and 0.1% BSA
Target Molecular Weight	29 kDa

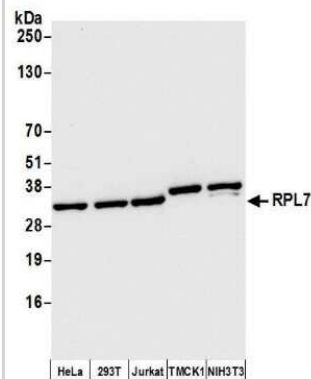
Product Description	
Description	Novus Biologicals Rabbit RPL7 Antibody (NB100-2269) is a polyclonal antibody validated for use in IHC, WB and IP. Anti-RPL7 Antibody: Cited in 9 publications. All Novus Biologicals antibodies are covered by our 100% guarantee.
Host	Rabbit
Gene ID	6129
Gene Symbol	RPL7
Species	Human, Mouse
Immunogen	The immunogen recognized by this antibody maps to a region between residue 200 and the C-terminus (residue 248) of human Ribosomal Protein L7 using the numbering given in entry NP_000962.2 (GeneID 6129).

Product Application Details	
Applications	Western Blot, Immunohistochemistry-Paraffin, Immunohistochemistry, Immunoprecipitation, Knockdown Validated
Recommended Dilutions	Western Blot 1:2000 - 1:10000, Immunohistochemistry 1:100-1:500, Immunoprecipitation 2-10 ug/mg lysate, Immunohistochemistry-Paraffin 1:100-1:500, Knockdown Validated
Application Notes	Epitope retrieval with citrate buffer pH6.0 is recommended for FFPE tissue sections.

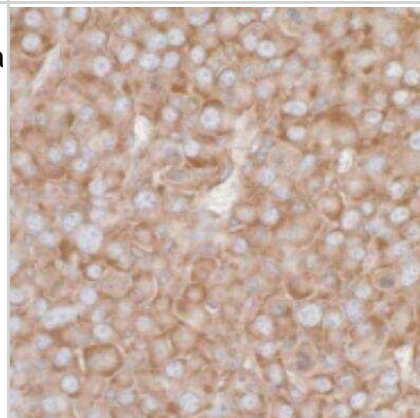


Images

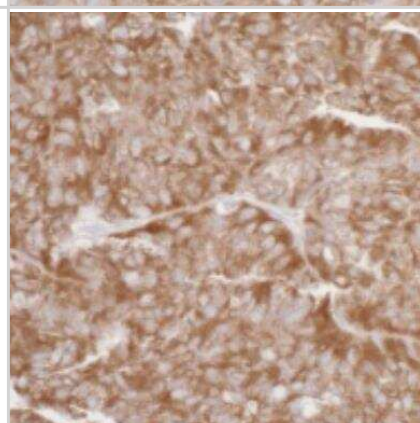
Western Blot: RPL7 Antibody [NB100-2269] - Detection of human and mouse RPL7 by western blot. Samples: Whole cell lysate (50 ug) from HeLa, HEK293T, Jurkat, mouse TMCK-1, and mouse NIH 3T3 cells prepared using RIPA lysis buffer. Antibody: Affinity purified rabbit anti-RPL7 antibody NB100-2269 used for WB at 0.04 ug/ml. Detection: Chemiluminescence with an exposure time of 3 seconds.



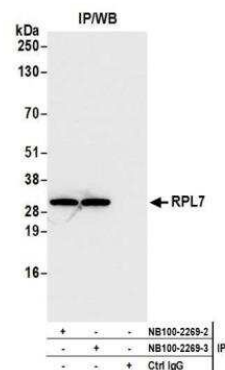
Immunohistochemistry-Paraffin: RPL7 Antibody [NB100-2269] - Mouse renal cell carcinoma. Antibody: Affinity purified rabbit anti-RPL7 used at a dilution of 1:1,000 (0.2ug/ml). Detection: DAB



Immunohistochemistry-Paraffin: RPL7 Antibody [NB100-2269] - Human ovarian carcinoma. Antibody: Affinity purified rabbit anti-RPL7 used at a dilution of 1:1,000 (0.2ug/ml). Detection: DAB



Immunoprecipitation: RPL7 Antibody [NB100-2269] - Detection of human RPL7 by western blot of immunoprecipitates. Samples: Whole cell lysate (1.0 mg per IP reaction; 20% of IP loaded) from HEK293T cells prepared using RIPA lysis buffer. Antibodies: Affinity purified rabbit anti-RPL7 antibody NB100-2269 (lot NB100-2269-3) used for IP at 6 ug per reaction. RPL7 was also immunoprecipitated by a previous lot of this antibody (lot NB100-2269-2). For blotting immunoprecipitated RPL7, NB100-2269 was used at 1 ug/ml. Detection: Chemiluminescence with an exposure time of 1 second.



Publications

Schatton D, Di Pietro G, Szczepanowska K et al. CLUH controls astrin-1 expression to couple mitochondrial metabolism to cell cycle progression *eLife* 2022-05-13 [PMID: 35559794]

van den Akker GGH, Chabronova A, Housmans BAC et Al. TGF- β 2 Induces Ribosome Activity, Alters Ribosome Composition and Inhibits IRES-Mediated Translation in Chondrocytes *Int J Mol Sci* 2024-05-05 [PMID: 38732249]

Good AL Unraveling The Beta Cell Translatome: Elucidation Of An Erk/hnnpk/jund Axis Thesis (WB, KD, IP, Mouse, Human)

Good, AL;Cannon, CE;Haemmerle, MW;Yang, J;Stanescu, DE;Doliba, NM;Birnbaum, MJ;Stoffers, DA; JUND regulates pancreatic beta cell survival during metabolic stress *Mol Metab* 2019-04-11 [PMID: 31023625] (WB, Mouse)

MacNair L, Xiao S, Miletic D et al. MTHFSD and DDX58 are novel RNA-binding proteins abnormally regulated in amyotrophic lateral sclerosis. *Brain*. 2015-11-02 [PMID: 26525917] (WB)

Gao J, Schatton D, Martinelli P et al. CLUH regulates mitochondrial biogenesis by binding mRNAs of nuclear-encoded mitochondrial proteins. CLUH regulates mitochondrial biogenesis by binding mRNAs of nuclear-encoded mitochondrial proteins. 2014-10-27 [PMID: 25349259] (WB, Human, Mouse)

Bae H, Gray JS, Li M et al. Hematopoietic cell kinase associates with the 40S ribosomal subunit and mediates the ribotoxic stress response to deoxynivalenol in mononuclear phagocytes. *Toxicol Sci* 2010-06-01 [PMID: 20181660]

Amorim MJ, Mata J. Rng3, a member of the UCS family of myosin co-chaperones, associates with myosin heavy chains cotranslationally. *EMBO Rep* 2009-02-01 [PMID: 19098712]

Sanchez G, Dury AY, Murray LM et al. A novel function for the survival motoneuron protein as a translational regulator *Hum Mol Genet* 2012-11-21 [PMID: 23136128] (WB, Human)

El Fatimy R, Tremblay S, Dury AY et al. Fragile Mental Retardation Protein Interacts with the RNA-Binding Protein Caprin1 in Neuronal RiboNucleoProtein Complexes *PLoS One* 2012-01-01 [PMID: 22737234] (WB, Mouse)





Novus Biologicals USA

10730 E. Briarwood Avenue
Centennial, CO 80112
USA
Phone: 303.730.1950
Toll Free: 1.888.506.6887
Fax: 303.730.1966
nb-customerservice@bio-techne.com

Bio-Techne Canada

21 Canmotor Ave
Toronto, ON M8Z 4E6
Canada
Phone: 905.827.6400
Toll Free: 855.668.8722
Fax: 905.827.6402
canada.inquires@bio-techne.com

Bio-Techne Ltd

19 Barton Lane
Abingdon Science Park
Abingdon, OX14 3NB, United Kingdom
Phone: (44) (0) 1235 529449
Free Phone: 0800 37 34 15
Fax: (44) (0) 1235 533420
info.EMEA@bio-techne.com

General Contact Information

www.novusbio.com
Technical Support: nb-technical@bio-techne.com
Orders: nb-customerservice@bio-techne.com
General: novus@novusbio.com

Products Related to NB100-2269

NBP2-33376H	Blue Marker Antibody (6F4-F6) [HRP]
HAF008	Goat anti-Rabbit IgG Secondary Antibody [HRP]
NB7160	Goat anti-Rabbit IgG (H+L) Secondary Antibody [HRP]
NBP2-24891	Rabbit IgG Isotype Control

Limitations

This product is for research use only and is not approved for use in humans or in clinical diagnosis. Primary Antibodies are guaranteed for 1 year from date of receipt.

For more information on our 100% guarantee, please visit www.novusbio.com/guarantee

Earn gift cards/discounts by submitting a review: www.novusbio.com/reviews/submit/NB100-2269

Earn gift cards/discounts by submitting a publication using this product:
www.novusbio.com/publications

