

Product Datasheet

RPL7 Antibody - BSA Free NB100-2268

Unit Size: 100 ul

Store at 4C. Do not freeze.

www.novusbio.com



technical@novusbio.com

Publications: 5

Protocols, Publications, Related Products, Reviews, Research Tools and Images at:
www.novusbio.com/NB100-2268

Updated 9/9/2025 v.20.1

Earn rewards for product
reviews and publications.

Submit a publication at www.novusbio.com/publications

Submit a review at www.novusbio.com/reviews/destination/NB100-2268



NB100-2268

RPL7 Antibody - BSA Free

Product Information	
Unit Size	100 ul
Concentration	1.0 mg/ml
Storage	Store at 4C. Do not freeze.
Clonality	Polyclonal
Preservative	0.09% Sodium Azide
Isotype	IgG
Purity	Immunogen affinity purified
Buffer	Tris-Citrate/Phosphate (pH 7.0 - 8.0)
Target Molecular Weight	29 kDa

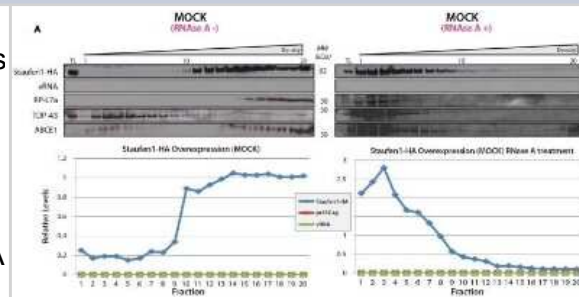
Product Description	
Description	Novus Biologicals Rabbit RPL7 Antibody - BSA Free (NB100-2268) is a polyclonal antibody validated for use in WB. Anti-RPL7 Antibody: Cited in 5 publications. All Novus Biologicals antibodies are covered by our 100% guarantee.
Host	Rabbit
Gene ID	6129
Gene Symbol	RPL7
Species	Human, Mouse
Reactivity Notes	Orangutan (100%).
Immunogen	The immunogen recognized by this antibody maps to a region between residue 75 and 125 of human Ribosomal Protein 7 using the numbering given in entry NP_000962.2 (GeneID 6129).

Product Application Details	
Applications	Western Blot, Immunoprecipitation (Negative)
Recommended Dilutions	Western Blot 1:2000-1:10000, Immunoprecipitation (Negative)
Application Notes	Immunoprecipitation: Not recommended. Use rabbit anti-RPL7 Antibody NB 100-2269.

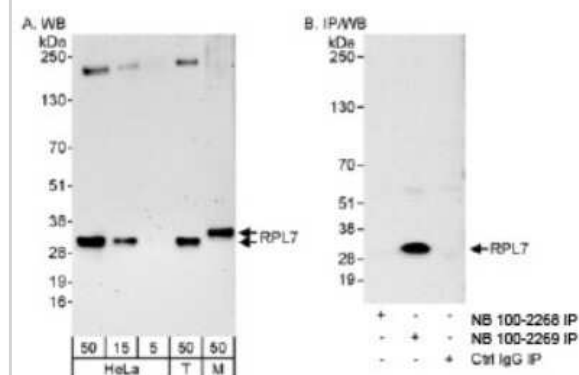


Images

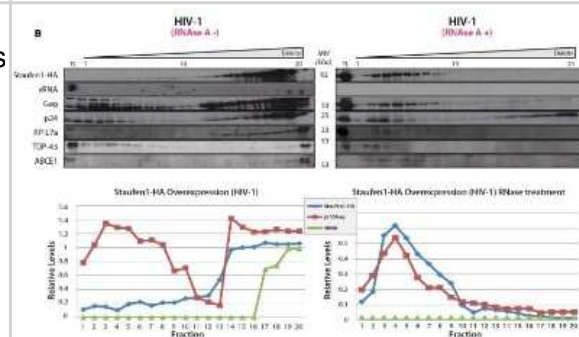
Western Blot: RPL7 Antibody [NB100-2268] - Staufen1 co-fractionates with Gag and vRNA in gradient density fractionation analyses. HeLa cells were either mock transfected with empty vector, pcDNA3, or with a plasmid that expresses Staufen1-HA. The transfected cells were collected 24h later, lysed and were either mock-treated or treated with RNase A. The lysates were then fractionated on 5-50% sucrose gradients and 20 fractions were collected for further analysis by western blotting for viral and host proteins, as indicated. HIV-1 viral genomic RNA (vRNA, 9kb) was assessed in each fraction by slot blot analysis. TL represents the total lysates. Image collected and cropped by CiteAb from the following publication (<https://www.frontiersin.org/Journal/10.3389/fmicb.2012.00367/full>), licensed under a CC-BY license.



Western Blot: RPL7 Antibody [NB100-2268] - Detection of Human and Mouse RPL7 on HeLa whole cell lysate using NB100-2268. RPL7 was immunoprecipitated by rabbit anti-RPL7 antibody NB100-2269.



Western Blot: RPL7 Antibody [NB100-2268] - Staufen1 co-fractionates with Gag and vRNA in gradient density fractionation analyses. HeLa cells were co-transfected with pNL 4-3 and Staufen1-HA. The presence of Staufen1-HA, precursor Gag and p24 were assessed in each fraction by western blotting analysis. HIV-1 viral genomic RNA (9kb, vRNA) was assessed in each fraction by slot blot analysis. Staufen1, Gag and vRNA were quantitated in each fraction by densitometry and relative levels are depicted for each fraction (Blue: Staufen1-HA, Red: Gag, Green-vRNA). Image collected and cropped by CiteAb from the following publication (<https://www.frontiersin.org/Journal/10.3389/fmicb.2012.00367/full>), licensed under a CC-BY license.



Publications

Girgis S, Xu Z, Oikonomopoulos S et al. Evolution of naturally arising SARS-CoV-2 defective interfering particles Communications biology 2022-10-27 [PMID: 36302891] (WB, Human)

O'Leary MN, Schreiber KH, Zhang Y et al. The Ribosomal Protein Rpl22 Controls Ribosome Composition by Directly Repressing Expression of Its Own Paralog, Rpl22i1. PLoS Genet. 2013-08-01 [PMID: 23990801] (WB, Mouse)

Maggi LB Jr, Kuchenruether M, Dadey DY et al. Nucleophosmin serves as a rate-limiting nuclear export chaperone for the Mammalian ribosome. Mol Cell Biol 2008-12-01 [PMID: 18809582]

Milev MP, Ravichandran M, Khan MF et al. Characterization of Staufen1 Ribonucleoproteins by Mass Spectrometry and Biochemical Analyses Reveal the Presence of Diverse Host Proteins Associated with Human Immunodeficiency Virus Type 2 Front Microbiol 2012-01-01 [PMID: 23125841] (WB, Human)

Sanz E, Yang L, Su T et al. Cell-type-specific isolation of ribosome-associated mRNA from complex tissues. PNAS;106(33):13939-13944. 2009-01-01 [PMID: 19666516]



Novus Biologicals USA

10730 E. Briarwood Avenue
Centennial, CO 80112
USA
Phone: 303.730.1950
Toll Free: 1.888.506.6887
Fax: 303.730.1966
nb-customerservice@bio-techne.com

Bio-Techne Canada

21 Canmotor Ave
Toronto, ON M8Z 4E6
Canada
Phone: 905.827.6400
Toll Free: 855.668.8722
Fax: 905.827.6402
canada.inquires@bio-techne.com

Bio-Techne Ltd

19 Barton Lane
Abingdon Science Park
Abingdon, OX14 3NB, United Kingdom
Phone: (44) (0) 1235 529449
Free Phone: 0800 37 34 15
Fax: (44) (0) 1235 533420
info.EMEA@bio-techne.com

General Contact Information

www.novusbio.com
Technical Support: nb-technical@bio-techne.com
Orders: nb-customerservice@bio-techne.com
General: novus@novusbio.com

Products Related to NB100-2268

NBP2-33376H	Blue Marker Antibody (6F4-F6) [HRP]
HAF008	Goat anti-Rabbit IgG Secondary Antibody [HRP]
NB7160	Goat anti-Rabbit IgG (H+L) Secondary Antibody [HRP]
NBP2-24891	Rabbit IgG Isotype Control

Limitations

This product is for research use only and is not approved for use in humans or in clinical diagnosis. Primary Antibodies are guaranteed for 1 year from date of receipt.

For more information on our 100% guarantee, please visit www.novusbio.com/guarantee

Earn gift cards/discounts by submitting a review: www.novusbio.com/reviews/submit/NB100-2268

Earn gift cards/discounts by submitting a publication using this product:
www.novusbio.com/publications

