

Product Datasheet

Ribosomal protein L26 Antibody NB100-2131

Unit Size: 0.1 ml

Store at 4C. Do not freeze.

www.novusbio.com



technical@novusbio.com

Publications: 1

Protocols, Publications, Related Products, Reviews, Research Tools and Images at:
www.novusbio.com/NB100-2131

Updated 9/9/2025 v.20.1

Earn rewards for product
reviews and publications.

Submit a publication at www.novusbio.com/publications

Submit a review at www.novusbio.com/reviews/destination/NB100-2131



NB100-2131

Ribosomal protein L26 Antibody

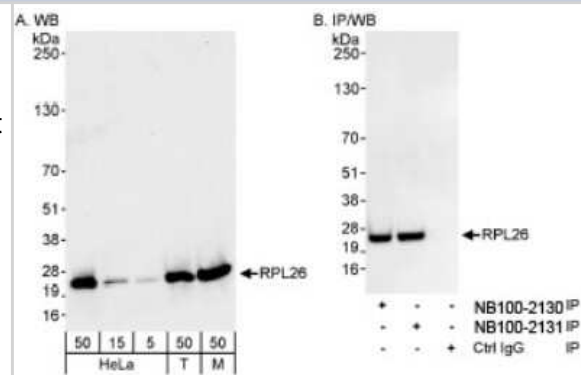
Product Information	
Unit Size	0.1 ml
Concentration	0.2 mg/ml
Storage	Store at 4C. Do not freeze.
Clonality	Polyclonal
Preservative	0.09% Sodium Azide
Isotype	IgG
Purity	Immunogen affinity purified
Buffer	TBS and 0.1% BSA

Product Description	
Description	Novus Biologicals Rabbit Ribosomal protein L26 Antibody (NB100-2131) is a polyclonal antibody validated for use in IHC, WB and IP. Anti-Ribosomal protein L26 Antibody: Cited in 1 publication. All Novus Biologicals antibodies are covered by our 100% guarantee.
Host	Rabbit
Gene ID	6154
Gene Symbol	RPL26
Species	Human, Mouse
Immunogen	The immunogen recognized by this antibody maps to a region between residue 100 and the C-terminus (residue 145) of human Ribosomal Protein L26 using the numbering given in entry NP_000978.1 (GeneID 6154).

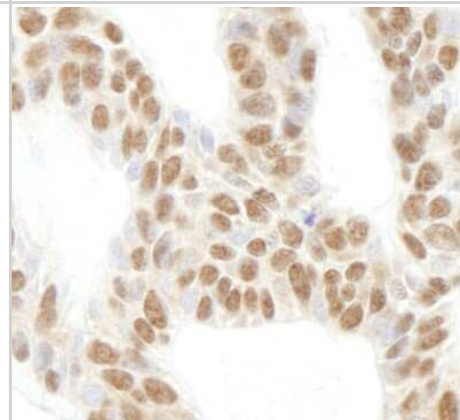
Product Application Details	
Applications	Western Blot, Immunohistochemistry-Paraffin, Immunohistochemistry, Immunoprecipitation
Recommended Dilutions	Western Blot 1:2500-1:10000, Immunohistochemistry 1:200 - 1:1000, Immunoprecipitation 1-4 ug/mg of lysate, Immunohistochemistry-Paraffin 1:250-1:500
Application Notes	Epitope retrieval with citrate buffer pH6.0 is recommended for FFPE tissue sections.

Images

Western Blot: Ribosomal protein L26 Antibody [NB100-2131] - Samples: Whole cell lysate from HeLa (5, 15 and 50 ug for WB; 1 mg for IP, 20% of IP loaded), 293T (T; 50 ug) and mouse NIH3T3 (M; 50 ug) cells. Affinity purified rabbit anti-RPL26 antibody (NB100-2131) used for WB at 0.04 ug/ml (A) and 1 ug/ml (B), and used for IP at 3 ug/mg lysate.



Immunohistochemistry-Paraffin: Ribosomal protein L26 Antibody [NB100-2131] - Sample: FFPE section of human skin carcinoma. Antibody: Affinity purified rabbit anti-expndtw-4 RPL26 used at a dilution of 1:200 (1ug/ml). Detection: DAB



Publications

Geissler R, Golbik RP, Behrens SE et al. The DEAD-box helicase DDX3 supports the assembly of functional 80S ribosomes. *Nucleic Acids Res* 2012-06-01 [PMID: 22323517]



Novus Biologicals USA

10730 E. Briarwood Avenue
Centennial, CO 80112
USA
Phone: 303.730.1950
Toll Free: 1.888.506.6887
Fax: 303.730.1966
nb-customerservice@bio-techne.com

Bio-Techne Canada

21 Canmotor Ave
Toronto, ON M8Z 4E6
Canada
Phone: 905.827.6400
Toll Free: 855.668.8722
Fax: 905.827.6402
canada.inquires@bio-techne.com

Bio-Techne Ltd

19 Barton Lane
Abingdon Science Park
Abingdon, OX14 3NB, United Kingdom
Phone: (44) (0) 1235 529449
Free Phone: 0800 37 34 15
Fax: (44) (0) 1235 533420
info.EMEA@bio-techne.com

General Contact Information

www.novusbio.com
Technical Support: nb-technical@bio-techne.com
Orders: nb-customerservice@bio-techne.com
General: novus@novusbio.com

Products Related to NB100-2131

NBL1-15517	Ribosomal protein L26 Overexpression Lysate
NBP2-33376H	Blue Marker Antibody (6F4-F6) [HRP]
HAF008	Goat anti-Rabbit IgG Secondary Antibody [HRP]
NB7160	Goat anti-Rabbit IgG (H+L) Secondary Antibody [HRP]
NBP2-24891	Rabbit IgG Isotype Control

Limitations

This product is for research use only and is not approved for use in humans or in clinical diagnosis. Primary Antibodies are guaranteed for 1 year from date of receipt.

For more information on our 100% guarantee, please visit www.novusbio.com/guarantee

Earn gift cards/discounts by submitting a review: www.novusbio.com/reviews/submit/NB100-2131

Earn gift cards/discounts by submitting a publication using this product:
www.novusbio.com/publications

