

Product Datasheet

Ribosomal protein L26 Antibody - BSA Free NB100-2130

Unit Size: 100 ul

Store at 4C. Do not freeze.

www.novusbio.com



technical@novusbio.com

Publications: 4

Protocols, Publications, Related Products, Reviews, Research Tools and Images at:
www.novusbio.com/NB100-2130

Updated 9/9/2025 v.20.1

**Earn rewards for product
reviews and publications.**

Submit a publication at www.novusbio.com/publications

Submit a review at www.novusbio.com/reviews/destination/NB100-2130



NB100-2130

Ribosomal protein L26 Antibody - BSA Free

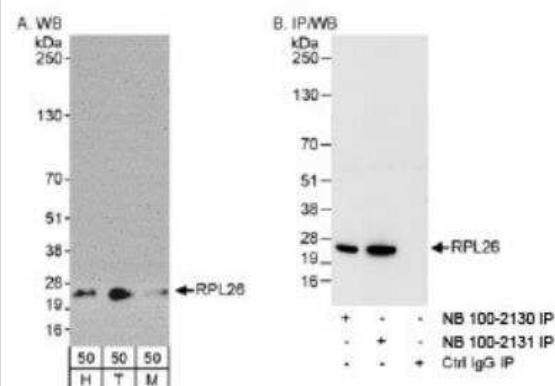
Product Information	
Unit Size	100 ul
Concentration	1.0 mg/ml
Storage	Store at 4C. Do not freeze.
Clonality	Polyclonal
Preservative	0.09% Sodium Azide
Isotype	IgG
Purity	Immunogen affinity purified
Buffer	Tris-Citrate/Phosphate (pH 7.0 - 8.0)

Product Description	
Description	Novus Biologicals Rabbit Ribosomal protein L26 Antibody - BSA Free (NB100-2130) is a polyclonal antibody validated for use in WB, IP and ChIP. Anti-Ribosomal protein L26 Antibody: Cited in 4 publications. All Novus Biologicals antibodies are covered by our 100% guarantee.
Host	Rabbit
Gene ID	6154
Gene Symbol	RPL26
Species	Human, Mouse
Immunogen	The immunogen recognized by this antibody maps to a region between residue 1 and 50 of human Ribosomal Protein L26 using the numbering given in entry NP_000978.1 (GeneID 6154).

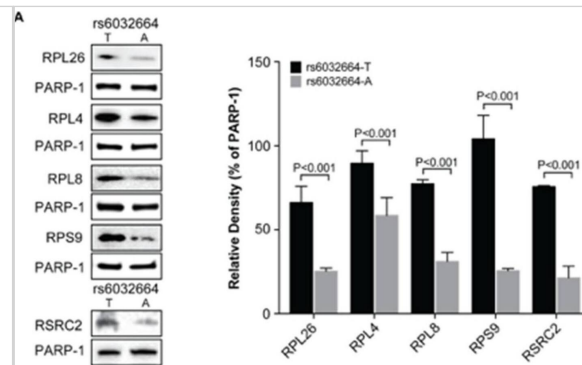
Product Application Details	
Applications	Western Blot, Immunoprecipitation, Chromatin Immunoprecipitation (ChIP)
Recommended Dilutions	Western Blot 1:2500-1:10000, Immunoprecipitation 1-4 ug/mg of lysate, Chromatin Immunoprecipitation (ChIP)
Application Notes	Use in ChIP reported in scientific literature (PMID:33371207).

Images

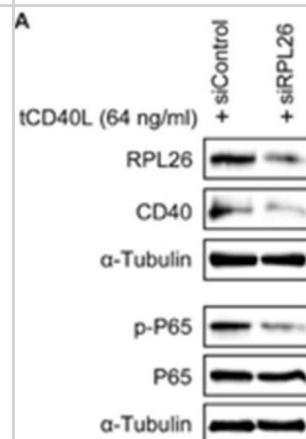
Western Blot: Ribosomal protein L26 Antibody [NB100-2130] - Detection of Human and Mouse RPL26 on HeLa whole cell lysate using NB100-2130. RPL26 was also immunoprecipitated by rabbit anti-RPL26 antibody NB100-2131.



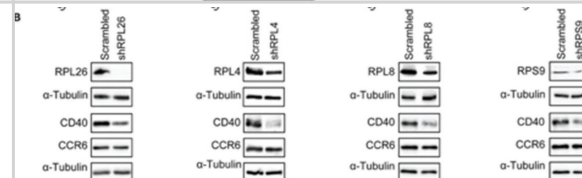
Western Blot: Ribosomal protein L26 Antibody [NB100-2130] - Demonstration of the binding of RPL26, RPL4, RPL8, & RPS9 to rs6032664. (A) Allele-imbalanced binding of RPL26, RPL4, RPL8 & RPS9 to the T (risk allele) & A (non-risk allele) of rs6032664 with the statistical analysis based on the relative density. PARP-1 was used as internal loading control & RSR2 was used as a positive control. (B) Luciferase reporter assays with the risk allele T of rs6032664 demonstrate that RPL26, RPL4, RPL8, & RPS9 are the transcriptional regulators. si: siRNA. (C). ChIP assay showing endogenous binding of RPL26 to rs6032664. (mean \pm SD, n = 3 biological replicates, Student t-test with 2 tails). sh: shRNA. NS: not significant. Image collected & cropped by CiteAb from the following publication (<https://pubmed.ncbi.nlm.nih.gov/33371207>), licensed under a CC-BY license. Not internally tested by Novus Biologicals.



Western Blot: Ribosomal protein L26 Antibody [NB100-2130] - Regulation of disease-associated risk genes STAT4, TRAF1, ICAM1, & CD86 by RPL26 via disease-associated TRN linked by CD40-induced NF- κ B signal pathway. (A) Western blots showing inactivation of NF- κ B p65 by dephosphorylation upon CD40L activation in the RPL26 siRNA knockdown FLS. Statistical analysis based on the relative density is shown. (B) real time PCR showing downregulation of four disease-associated risk genes STAT4, TRAF1, ICAM1, & CD86 as the direct targets of NF- κ B p65, (C) real time PCR showing downregulation of IL6 & IL1 β as the direct targets of NF- κ B p65. si: siRNA. Image collected & cropped by CiteAb from the following publication (<https://pubmed.ncbi.nlm.nih.gov/33371207>), licensed under a CC-BY license. Not internally tested by Novus Biologicals.



Western Blot: Ribosomal protein L26 Antibody [NB100-2130] - Demonstration of RPL26, RPL4, RPL8, & RPS9, as CD40 transcription regulators in human B cells. (A) Knockdown of RPL26, RPL4, RPL8, & RPS9, in human BL2 cells using shRNA as shown by real time PCR. (B) Western blots showing downregulation of RPL26, RPL4, RPL8, & RPS9 results in decreased expression of CD40, but not CCR6 in BL2 cells. Whole cell protein was used for Western blots. (C) Statistical analysis of Western blots in (B) based on relative density. NS: not significant. (D) Down-regulation of CD40 expression on mRNA levels in the knockdown cells, suggesting a transcriptional regulation of CD40 expression. α -Tubulin was used for loading control. CCR6 was used as a negative control for translational regulation. (E) FACS analysis of CD40 surface expression in the RPL26, RPL4, RPL8, & RPS9 shRNA knockdown BL2 cells. Scrambled: scrambled shRNA control. sh: shRNA. **: p value < 0.01. Image collected & cropped by CiteAb from the following publication (<https://pubmed.ncbi.nlm.nih.gov/33371207>), licensed under a CC-BY license. Not internally tested by Novus Biologicals.



Publications

Zou M, Zhang X, Jiang D et al. Transcriptional Regulation of CD40 Expression by 4 Ribosomal Proteins via a Functional SNP on a Disease-Associated CD40 Locus Genes 2020-12-21 [PMID: 33371207] (Chemotaxis)

Chen J, Kastan MB., et al. 5'-3'-UTR interactions regulate p53 mRNA translation and provide a target for modulating p53 induction after DNA damage. *Genes Dev* 2010-09-13 [PMID: 20837656]

Yun C, Wang Y, Mukhopadhyay D et al. Nucleolar protein B23/nucleophosmin regulates the vertebrate SUMO pathway through SENP3 and SENP5 proteases. *J Cell Biol* 2008-11-17 [PMID: 19015314]

Starheim KK, Gromyko D, Evjenth R et al. Knockdown of Human N{alpha}-Terminal Acetyltransferase Complex C Leads to p53-Dependent Apoptosis Aberrant Human Arl8b Localization. *Mol Cell Biol*;29(13):3569-3581. 2009-01-01 [PMID: 19398576]



Novus Biologicals USA

10730 E. Briarwood Avenue
Centennial, CO 80112
USA

Phone: 303.730.1950

Toll Free: 1.888.506.6887

Fax: 303.730.1966

nb-customerservice@bio-techne.com

Bio-Techne Canada

21 Canmotor Ave
Toronto, ON M8Z 4E6
Canada

Phone: 905.827.6400

Toll Free: 855.668.8722

Fax: 905.827.6402

canada.inquires@bio-techne.com

Bio-Techne Ltd

19 Barton Lane
Abingdon Science Park
Abingdon, OX14 3NB, United Kingdom

Phone: (44) (0) 1235 529449

Free Phone: 0800 37 34 15

Fax: (44) (0) 1235 533420

info.EMEA@bio-techne.com

General Contact Information

www.novusbio.com

Technical Support: nb-technical@bio-techne.com

Orders: nb-customerservice@bio-techne.com

General: novus@novusbio.com

Products Related to NB100-2130

NBL1-15517	Ribosomal protein L26 Overexpression Lysate
NBP2-33376H	Blue Marker Antibody (6F4-F6) [HRP]
HAF008	Goat anti-Rabbit IgG Secondary Antibody [HRP]
NB7160	Goat anti-Rabbit IgG (H+L) Secondary Antibody [HRP]
NBP2-24891	Rabbit IgG Isotype Control

Limitations

This product is for research use only and is not approved for use in humans or in clinical diagnosis. Primary Antibodies are guaranteed for 1 year from date of receipt.

For more information on our 100% guarantee, please visit www.novusbio.com/guarantee

Earn gift cards/discounts by submitting a review: www.novusbio.com/reviews/submit/NB100-2130

Earn gift cards/discounts by submitting a publication using this product:
www.novusbio.com/publications



