

Product Datasheet

CaM Kinase II alpha Antibody (6G9) - BSA Free NB100-1983

Unit Size: 0.1 mg

Store at 4C short term. Aliquot and store at -20C long term. Avoid freeze-thaw cycles.

www.novusbio.com



technical@novusbio.com

Publications: 16

Protocols, Publications, Related Products, Reviews, Research Tools and Images at:
www.novusbio.com/NB100-1983

Updated 9/9/2025 v.20.1

**Earn rewards for product
reviews and publications.**

Submit a publication at www.novusbio.com/publications

Submit a review at www.novusbio.com/reviews/destination/NB100-1983



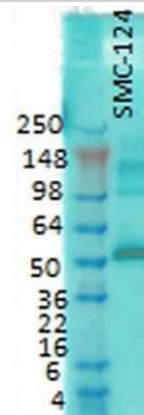
NB100-1983

CaM Kinase II alpha Antibody (6G9) - BSA Free

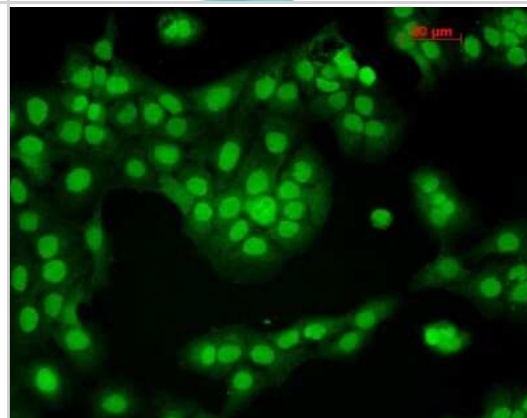
Product Information	
Unit Size	0.1 mg
Concentration	1 mg/ml
Storage	Store at 4C short term. Aliquot and store at -20C long term. Avoid freeze-thaw cycles.
Clonality	Monoclonal
Clone	6G9
Preservative	0.09% Sodium Azide
Isotype	IgG1
Purity	Protein G purified
Buffer	PBS (pH 7.4), 50% Glycerol
Target Molecular Weight	54 kDa
Product Description	
Description	Novus Biologicals Mouse CaM Kinase II alpha Antibody (6G9) - BSA Free (NB100-1983) is a monoclonal antibody validated for use in IHC, WB, ELISA, ICC/IF and IP. Anti-CaM Kinase II alpha Antibody: Cited in 16 publications. All Novus Biologicals antibodies are covered by our 100% guarantee.
Host	Mouse
Gene ID	815
Gene Symbol	CAMK2A
Species	Human, Mouse, Rat, Bovine, Xenopus
Reactivity Notes	Mouse reactivity reported in scientific literature (PMID: 28421537). Xenopus reactivity reported in scientific literature (PMID: 29412139). Please note that this antibody is reactive to Mouse and derived from the same host, Mouse. Mouse-On-Mouse blocking reagent may be needed for IHC and ICC experiments to reduce high background signal. You can find these reagents under catalog numbers PK-2200-NB and MP-2400-NB. Please contact Technical Support if you have any questions.
Specificity/Sensitivity	Detects approx 50-60kDa. Recognizes both phosphorylated and non-phosphorylated forms.
Immunogen	Partially purified rat CaMKII
Product Application Details	
Applications	Western Blot, Immunohistochemistry-Paraffin, ELISA, Immunocytochemistry/Immunofluorescence, Immunohistochemistry, Immunoprecipitation, Radioimmunoassay
Recommended Dilutions	Western Blot 1:10000, ELISA, Immunohistochemistry 1:2000, Immunocytochemistry/ Immunofluorescence 1:50, Immunoprecipitation, Immunohistochemistry-Paraffin 1:10-1:500, Radioimmunoassay
Application Notes	0.1 ug/ml was sufficient for detection of CamKII in 20 ug rat brain tissue extract by colorimetric immunoblot analysis using Goat Anti-Mouse IgG:AP as the secondary.

Images

Western Blot: CaM Kinase II alpha Antibody (6G9) [NB100-1983] -
Western Blot analysis of Rat brain membrane lysate showing detection of CaM Kinase II alpha protein using Mouse Anti-CaM Kinase II alpha Monoclonal Antibody, Clone 6G9 (NB100-1983). Primary Antibody: Mouse Anti-CaM Kinase II alpha Monoclonal Antibody (NB100-1983) at 1:1000.



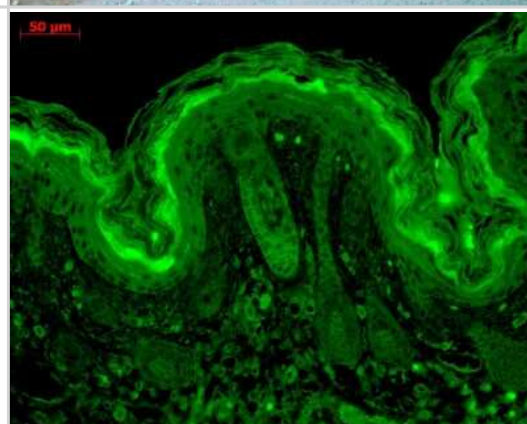
Immunocytochemistry/Immunofluorescence: CaM Kinase II alpha Antibody (6G9) [NB100-1983] -
Immunocytochemistry/Immunofluorescence analysis using Mouse Anti-CaM Kinase II alpha Monoclonal Antibody, Clone 6G9 (NB100-1983). Tissue: HaCaT cells. Species: Human. Fixation: Cold 100% methanol for 10 minutes at -20C. Primary Antibody: Mouse Anti-CaM Kinase II alpha Monoclonal Antibody (NB100-1983) at 1:100 for 1 hour at RT. Secondary Antibody: FITC Goat Anti-Mouse (green) at 1:50 for 1 hour at RT. Localization: Nuclear Staining.



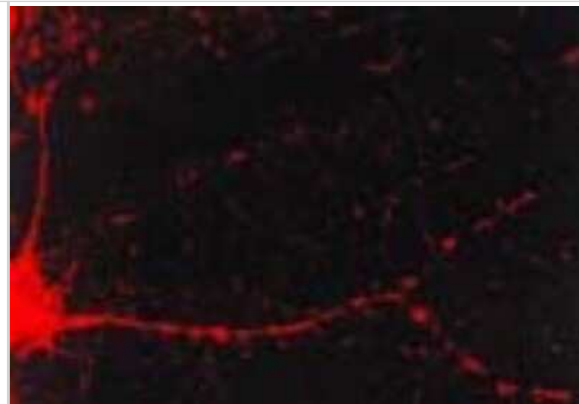
Immunohistochemistry: CaM Kinase II alpha Antibody (6G9) [NB100-1983] - Immunohistochemistry analysis using Mouse Anti-CaM Kinase II alpha Monoclonal Antibody, Clone 6G9 (NB100-1983). Tissue: colon carcinoma. Species: Human. Fixation: Formalin. Primary Antibody: Mouse Anti-CaM Kinase II alpha Monoclonal Antibody (NB100-1983) at 1:10000 for 12 hours at 4C. Secondary Antibody: Biotin Goat Anti-Mouse at 1:2000 for 1 hour at RT. Counterstain: Mayer Hematoxylin (purple/blue) nuclear stain at 200 I for 2 minutes at RT. Magnification: 40x.



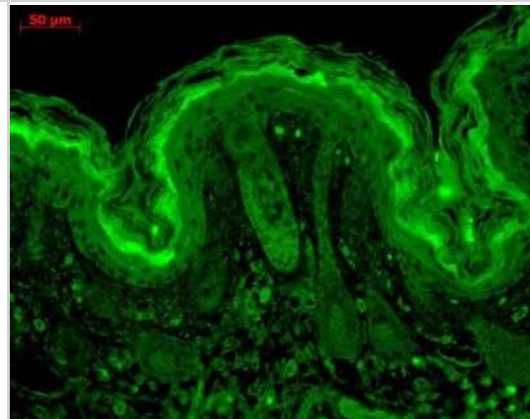
Immunocytochemistry/Immunofluorescence: CaM Kinase II alpha Antibody (6G9) [NB100-1983] - Tissue: backskin. Species: Mouse. Fixation: Bouins Fixative and paraffin-embedded. Primary Antibody: Mouse Anti-CaMKII Monoclonal Antibody at 1:100 for 1 hour at RT. Secondary Antibody: FITC Goat Anti-Mouse (green) at 1:50 for 1 hour at RT. Localization: Hair follicles, epidermis.



Immunocytochemistry/Immunofluorescence: CaM Kinase II alpha Antibody (6G9) [NB100-1983] - Tissue: dissociated hippocampal neurons. Species: Mouse. Fixation: Cold 4% paraformaldehyde/0.2% glutaraldehyde in 0.1M sodium phosphate buffer. Primary Antibody: Mouse Anti-CaMKII Monoclonal Antibody at 1:1000 for 12 hours at 4C. Secondary Antibody: FITC Goat Anti-Mouse IgG (green) at 1:50 for 30 minutes at RT. Magnification: 10X. Courtesy of: Mary Kennedy, Caltech.



Immunohistochemistry: CaM Kinase II alpha Antibody (6G9) [NB100-1983] - Immunohistochemistry analysis using Mouse Anti-CaM Kinase II alpha Monoclonal Antibody, Clone 6G9 (NB100-1983). Tissue: backskin. Species: Mouse. Fixation: Bouin's Fixative and paraffin-embedded. Primary Antibody: Mouse Anti-CaM Kinase II alpha Monoclonal Antibody (NB100-1983) at 1:100 for 1 hour at RT. Secondary Antibody: FITC Goat Anti-Mouse (green) at 1:50 for 1 hour at RT. Localization: Hair follicles, epidermis.



Publications

Rigter PMF, de Konink C, van Woerden GM. Loss of CAMK2G affects intrinsic and motor behavior but has minimal impact on cognitive behavior *Frontiers in Neuroscience* 2023-01-06 [PMID: 36685241]

N Micali, SK Kim, M Diaz-Busta, G Stein-O'Br, S Seo, JH Shin, BG Rash, S Ma, Y Wang, NA Olivares, JI Arellano, KR Maynard, EJ Fertig, AJ Cross, RW Bürli, NJ Brandon, DR Weinberger, JG Chenoweth, DJ Hoepfner, N Sestan, P Rakic, C Colantuoni, RD McKay Variation of Human Neural Stem Cells Generating Organizer States In $\frac{1}{2}$ Vitro before Committing to Cortical Excitatory or Inhibitory Neuronal Fates *Cell Rep*, 2020-05-05;31(5):107599. 2020-05-05 [PMID: 32375049]

Chen M, Wang C, Lin Y et al. Dorsal raphe nucleus-hippocampus serotonergic circuit underlies the depressive and cognitive impairments in 5xFAD male mice *Transl Neurodegener* 2024-07-24 [PMID: 39044270]

Ameen SS, Griem-Krey N, Dufour A et al. N-Terminomic Changes of Neurons During Excitotoxicity Reveal Proteolytic Events Associated with Synaptic Dysfunctions and Potential Targets for Neuroprotection *Molecular & cellular proteomics : MCP* 2023-04-06 [PMID: 37030595] (WB, Mouse)

Griem-Krey N, Gauger SJ, Gowing EK et al. The CaMKIIa hub ligand Ph-HTBA promotes neuroprotection after focal ischemic stroke by a distinct molecular interaction *Biomedicine & pharmacotherapy = Biomedecine & pharmacotherapie* 2022-10-20 [PMID: 36274464] (WB, Mouse)

Rigter PMF, Wallaard I, Aghadavoud Jolfaei M et al. Adult Camk2a gene reinstatement restores the learning and plasticity deficits of Camk2a knockout mice *iScience* 2022-11-18 [PMID: 36304100] (IP, IF/IHC, WB, Mouse)

Schiapparelli LM, Sharma P, He HY et al. Proteomic screen reveals diverse protein transport between connected neurons in the visual system *Cell reports* 2022-01-25 [PMID: 35081342] (WB, Rat)

Schiapparelli LM, Shah SH, Ma Y et al. The Retinal Ganglion Cell Transportome Identifies Proteins Transported to Axons and Presynaptic Compartments in the Visual System *In Vivo Cell Rep* 2019-08-13 [PMID: 31412257] (WB, Rat)

Koene LMC, van Grondelle SE, Proietti Onori M et al. Effects of antiepileptic drugs in a new TSC/mTOR-dependent epilepsy mouse model *Ann Clin Transl Neurol* 2019-07-01 [PMID: 31353861] (IF/IHC, Mouse)

Fang Q, Li Z, Huang GD et al. Traumatic Stress Produces Distinct Activations of GABAergic and Glutamatergic Neurons in Amygdala. *Front Neurosci* 2018-08-21 [PMID: 30186100] (ICC/IF, Rat)

Liu H. H, McClatchy D. B, et al. Role of the visual experience-dependent nascent proteome in neuronal plasticity. *Elife* 2018-02-07 [PMID: 29412139] (WB, Xenopus)

Li Y, You QL, Zhang SR et al. Satb2 Ablation Impairs Hippocampus-Based Long-Term Spatial Memory and Short-Term Working Memory and Immediate Early Genes (IEGs)-Mediated Hippocampal Synaptic Plasticity. *Mol. Neurobiol.* 2017-04-18 [PMID: 28421537] (WB, ICC/IF, Mouse)

More publications at <http://www.novusbio.com/NB100-1983>



Novus Biologicals USA

10730 E. Briarwood Avenue
Centennial, CO 80112
USA
Phone: 303.730.1950
Toll Free: 1.888.506.6887
Fax: 303.730.1966
nb-customerservice@bio-techne.com

Bio-Techne Canada

21 Canmotor Ave
Toronto, ON M8Z 4E6
Canada
Phone: 905.827.6400
Toll Free: 855.668.8722
Fax: 905.827.6402
canada.inquires@bio-techne.com

Bio-Techne Ltd

19 Barton Lane
Abingdon Science Park
Abingdon, OX14 3NB, United Kingdom
Phone: (44) (0) 1235 529449
Free Phone: 0800 37 34 15
Fax: (44) (0) 1235 533420
info.EMEA@bio-techne.com

General Contact Information

www.novusbio.com
Technical Support: nb-technical@bio-techne.com
Orders: nb-customerservice@bio-techne.com
General: novus@novusbio.com

Products Related to NB100-1983

NB820-59657	Mouse Brain Whole Tissue Lysate (Adult Whole Normal)
NBP2-33376H	Blue Marker Antibody (6F4-F6) [HRP]
HAF007	Goat anti-Mouse IgG Secondary Antibody [HRP]
NB7539	Goat anti-Mouse IgG (H+L) Secondary Antibody [HRP]
NBP1-97005-0.5mg	Mouse IgG1 Isotype Control (MG1)

Limitations

This product is for research use only and is not approved for use in humans or in clinical diagnosis. Primary Antibodies are guaranteed for 1 year from date of receipt.

For more information on our 100% guarantee, please visit www.novusbio.com/guarantee

Earn gift cards/discounts by submitting a review: www.novusbio.com/reviews/submit/NB100-1983

Earn gift cards/discounts by submitting a publication using this product:
www.novusbio.com/publications

