

Product Datasheet

Pancreatic Polypeptide/PP Antibody NB100-1793

Unit Size: 0.1 mg

Store at -20C. Avoid freeze-thaw cycles.

www.novusbio.com



technical@novusbio.com

Reviews: 3 Publications: 20

Protocols, Publications, Related Products, Reviews, Research Tools and Images at:
www.novusbio.com/NB100-1793

Updated 9/9/2025 v.20.1

**Earn rewards for product
reviews and publications.**

Submit a publication at www.novusbio.com/publications

Submit a review at www.novusbio.com/reviews/destination/NB100-1793



NB100-1793**Pancreatic Polypeptide/PP Antibody**

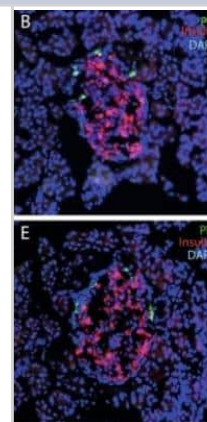
Product Information	
Unit Size	0.1 mg
Concentration	0.5 mg/ml
Storage	Store at -20C. Avoid freeze-thaw cycles.
Clonality	Polyclonal
Preservative	0.02% Sodium Azide
Isotype	IgG
Purity	Immunogen affinity purified
Buffer	Tris saline (20 mM Tris pH 7.3, 150 mM NaCl), 0.5% BSA

Product Description	
Description	Novus Biologicals Goat Pancreatic Polypeptide/PP Antibody (NB100-1793) is a polyclonal antibody validated for use in IHC, ELISA, Flow and ICC/IF. Anti-Pancreatic Polypeptide/PP Antibody: Cited in 19 publications. All Novus Biologicals antibodies are covered by our 100% guarantee.
Host	Goat
Gene ID	5539
Gene Symbol	PPY
Species	Human, Mouse, Rat, Monkey
Reactivity Notes	Monkey and Mouse reactivity reported from verified customer reviews.
Immunogen	Peptide with sequence C-TRPRYGKRHKEDT corresponding to internal region according to NP_002713.1.

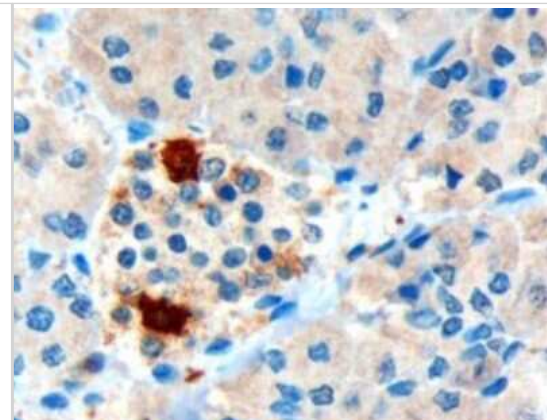
Product Application Details	
Applications	Immunohistochemistry-Paraffin, Flow Cytometry, Immunoblotting, Immunocytochemistry/ Immunofluorescence, Immunohistochemistry, Immunohistochemistry-Frozen, Peptide ELISA
Recommended Dilutions	Flow Cytometry, Immunohistochemistry 5 ug/mL, Immunocytochemistry/ Immunofluorescence, Immunohistochemistry-Paraffin 3 ug/ml, Immunohistochemistry-Frozen 1:500, Immunoblotting, Peptide ELISA Detection limit 1:32000
Application Notes	Use in Immunocytochemistry/immunofluorescence reported in scientific literature (PMID: 23221614). Use in immunoblotting reported in scientific literature (PMID: 27572106).

Images

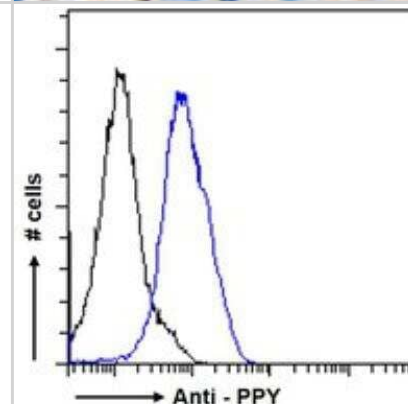
Immunocytochemistry/Immunofluorescence: Pancreatic Polypeptide/PP Antibody [NB100-1793] - Histologic comparison of wild type and *Seriola dumerili* mouse pancreata. *Seriola dumerili* Ins2 mice (bottom) have normal islet morphology and cyto-architecture compared to littermates with endogenous mouse Ins 1 and Ins 2 (top); pancreatic polypeptide (green; B,E). Scale bar: 100 um. Image collected and cropped by CiteAb from the following publication (www.nature.com/articles/s41598-019-40768-3) licensed under a CC-BY license.



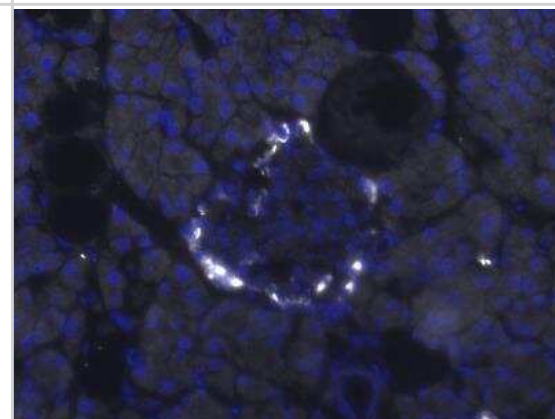
Immunohistochemistry-Paraffin: Pancreatic Polypeptide/PP Antibody [NB100-1793] - Staining of paraffin embedded Human Pancreas with antibody at 3 ug/mL. Microwaved antigen retrieval with Tris/EDTA buffer pH 9, HRP-staining.



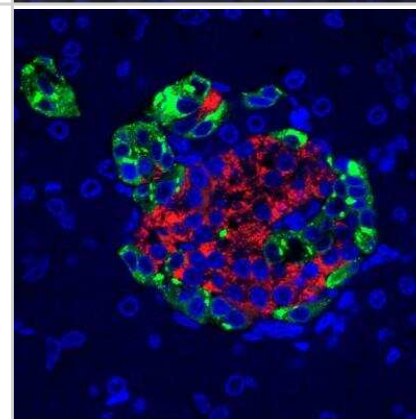
Flow Cytometry: Pancreatic Polypeptide/PP Antibody [NB100-1793] - Flow cytometric analysis of paraformaldehyde fixed U2OS cells (blue line), permeabilized with 0.5% Triton. Primary incubation 1hr (10 ug/mL) followed by Alexa Fluor 488 secondary antibody (1 ug/mL). IgG control: Unimmunized goat IgG (black line) followed by Alexa Fluor 488 secondary antibody.



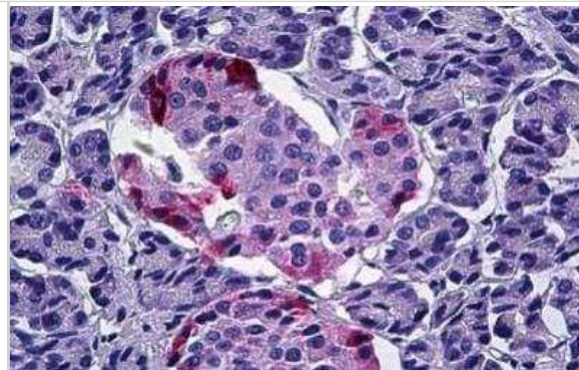
Immunohistochemistry-Frozen: Pancreatic Polypeptide/PP Antibody [NB100-1793] - Analysis of Pancreatic Polypeptide in mouse adult pancreas tissue. IHC-Fr image submitted by a verified customer review.



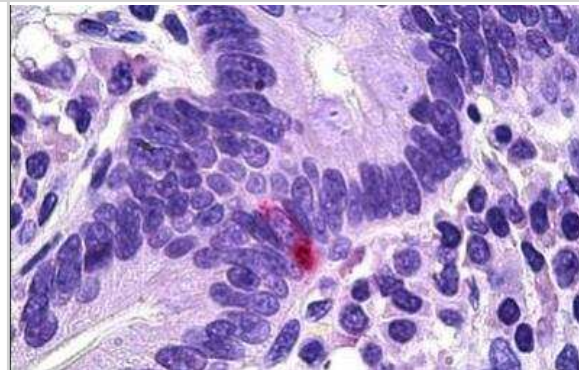
Immunohistochemistry-Paraffin: Pancreatic Polypeptide/PP Antibody [NB100-1793] - Adult macaque pancreas paraffin sections following standard protocols. IHC-P image submitted by a verified customer review.



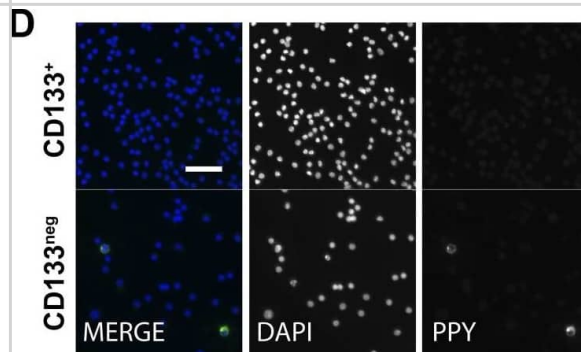
Immunohistochemistry-Paraffin: Pancreatic Polypeptide/PP Antibody [NB100-1793] - Staining of paraffin embedded Human Pancreas with antibody at 5 ug/mL. Steamed antigen retrieval with citrate buffer pH 6, AP-staining.



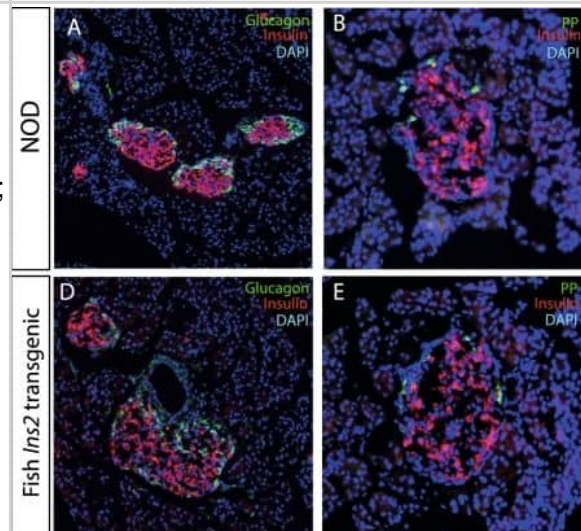
Immunohistochemistry-Paraffin: Pancreatic Polypeptide/PP Antibody [NB100-1793] - Staining of paraffin embedded Human Intestine with antibody at 5 ug/mL. Steamed antigen retrieval with citrate buffer pH 6, AP-staining.



Immunohistochemistry: Pancreatic Polypeptide/PP Antibody [NB100-1793] - Sorted CD133+ cells originate from pancreatic ducts.(A) Schematic diagram of the experimental procedure. Dissociated pancreatic cells were embedded & cultured as previously described (Lawson et al., 2007). Scale bar, 200 μ m. (B) Confocal images of CD133 (green) & CPA1 (red) co-staining in adult human pancreas tissue. Scale bar, 20 μ m. (C) CEL expression profiles of FACS-sorted human adult pancreatic cells & isolated islets (islet values normalized to 1). Data are presented as mean \pm SEM (n=3). (D) Representative immunostaining pictures of sorted cells. Scale bar, 50 μ m. DOI:<http://dx.doi.org/10.7554/eLife.00940.005> Image collected & cropped by CiteAb from the following publication (<https://pubmed.ncbi.nlm.nih.gov/24252877>), licensed under a CC-BY license. Not internally tested by Novus Biologicals.



Immunocytochemistry/ Immunofluorescence: Pancreatic Polypeptide/PP Antibody [NB100-1793] - Histologic comparison of wild type & *Seriola dumerili* mouse pancreata. *Seriola dumerili* Ins2 mice (bottom) have normal islet morphology & cyto-architecture compared to littermates with endogenous mouse Ins 1 & Ins 2 (top); insulin (red A–F), glucagon (green; A,D), pancreatic polypeptide (green; B,E), & somatostatin (green; C,F). G, H: Beta cell ultra-structure of NOD & *Seriola dumerili* Ins2 transgenic. Both NOD (G) & *Seriola dumerili* Ins2 transgenic (H) islets contain insulin granules (yellow arrow), though *Seriola dumerili* Ins2 transgenic insulin granules are lighter in staining intensity compared to the NOD (n = 4; zoom in; inset). (I,J) Insulinitis scoring pancreata from 12–15 weeks old NOD & *Seriola dumerili* Ins2 transgenics (n = 4 per group). Scale bar: 100 μ m. Image collected & cropped by CiteAb from the following publication (<https://pubmed.ncbi.nlm.nih.gov/30899071>), licensed under a CC-BY license. Not internally tested by Novus Biologicals.



Publications

Tixi W, Maldonado M, Chang YT et al. Coordination between ECM and cell-cell adhesion regulates the development of islet aggregation, architecture, and functional maturation *eLife* 2023-08-23 [PMID: 37610090]

Bastidas-Ponce A, Tritschler S, Dony L et al. Comprehensive single cell mRNA profiling reveals a detailed roadmap for pancreatic endocrinogenesis *Development* 2020-06-23 [PMID: 31160421]

Wang S The cell autonomous and cell non-autonomous roles of YAP1 during pancreatogenesis Thesis 2023-01-01

van Gorp L, Fodouliau L, Oropeza D et al. Generation of human islet cell type-specific identity genesets *Nature communications* [PMID: 35440614] (IHC-P, Human)

Rovira M, Maestro Ma, Grau V, Ferrer J Hnf1b-CreER causes efficient recombination of a Rosa26-RFP reporter in duct and islet delta cells *Islets* 2021-07-20 [PMID: 34282714]

Tang X, Uhl S, Zhang T et al. SARS-CoV-2 infection induces beta cell transdifferentiation *Cell Metabolism* 2021-05-01 [PMID: 34081913] (Human)

Foo KS, Skowronski AA, Baum D et al. Transgenic substitution with Greater Amberjack *Seriola dumerili* fish insulin 2 in NOD mice reduces beta cell immunogenicity *Sci Rep* 2019-03-21 [PMID: 30899071] (IHC-P, Mouse)

Hara A, Nakagawa Y, Nakao K et al. Development of monoclonal mouse antibodies that specifically recognize pancreatic polypeptide *Endocr. J.* 2019-03-06 [PMID: 30842364] (ICC/IF, Human)

Hull RL, Gibson RL, McNamara S et al. Islet Interleukin-1beta Immunoreactivity Is an Early Feature of Cystic Fibrosis That May Contribute to beta-Cell Failure. *Diabetes Care* 2018-04-01 [PMID: 29437698] (Human)

Lu TT, Heyne S, Dror E et al. The Polycomb-Dependent Epigenome Controls b Cell Dysfunction, Dedifferentiation, and Diabetes *Cell Metab.* 2018-06-05 [PMID: 29754954] (IF/IHC, Mouse)

Kim-Muller Jy, Fan J, Kim Yj et al. Aldehyde dehydrogenase 1a3 defines a subset of failing pancreatic beta cells in diabetic mice. *Nat Commun* 2016-08-30 [PMID: 27572106] (IF/IHC, IB)

Cinti F, Bouchi R, Kim-Muller JY et al. Evidence of B-cell Dedifferentiation in Human Type 2 Diabetes. *J. Clin. Endocrinol. Metab.* 2015-12-29 [PMID: 26713822] (IHC-Fr, Human)

More publications at <http://www.novusbio.com/NB100-1793>



Novus Biologicals USA

10730 E. Briarwood Avenue
Centennial, CO 80112
USA
Phone: 303.730.1950
Toll Free: 1.888.506.6887
Fax: 303.730.1966
nb-customerservice@bio-techne.com

Bio-Techne Canada

21 Canmotor Ave
Toronto, ON M8Z 4E6
Canada
Phone: 905.827.6400
Toll Free: 855.668.8722
Fax: 905.827.6402
canada.inquires@bio-techne.com

Bio-Techne Ltd

19 Barton Lane
Abingdon Science Park
Abingdon, OX14 3NB, United Kingdom
Phone: (44) (0) 1235 529449
Free Phone: 0800 37 34 15
Fax: (44) (0) 1235 533420
info.EMEA@bio-techne.com

General Contact Information

www.novusbio.com
Technical Support: nb-technical@bio-techne.com
Orders: nb-customerservice@bio-techne.com
General: novus@novusbio.com

Products Related to NB100-1793

NB100-1793PEP	Pancreatic Polypeptide/PP Peptide
HAF017	Rabbit anti-Goat IgG Secondary Antibody [HRP (Horseradish Peroxidase)]
HAF109	Donkey anti-Goat IgG Secondary Antibody [HRP (Horseradish Peroxidase)]
NB410-28088-1mg	Goat IgG Isotype Control

Limitations

This product is for research use only and is not approved for use in humans or in clinical diagnosis. Primary Antibodies are guaranteed for 1 year from date of receipt.

For more information on our 100% guarantee, please visit www.novusbio.com/guarantee

Earn gift cards/discounts by submitting a review: www.novusbio.com/reviews/submit/NB100-1793

Earn gift cards/discounts by submitting a publication using this product:
www.novusbio.com/publications



