

# Product Datasheet

## COMT Antibody NB100-1780

Unit Size: 0.1 mg

Store at -20C. Avoid freeze-thaw cycles.

[www.novusbio.com](http://www.novusbio.com)



[technical@novusbio.com](mailto:technical@novusbio.com)

### Publications: 3

Protocols, Publications, Related Products, Reviews, Research Tools and Images at:  
[www.novusbio.com/NB100-1780](http://www.novusbio.com/NB100-1780)

Updated 9/9/2025 v.20.1

Earn rewards for product  
reviews and publications.

Submit a publication at [www.novusbio.com/publications](http://www.novusbio.com/publications)

Submit a review at [www.novusbio.com/reviews/destination/NB100-1780](http://www.novusbio.com/reviews/destination/NB100-1780)



**NB100-1780****COMT Antibody**

<b>Product Information</b>	
<b>Unit Size</b>	0.1 mg
<b>Concentration</b>	0.5 mg/ml
<b>Storage</b>	Store at -20C. Avoid freeze-thaw cycles.
<b>Clonality</b>	Polyclonal
<b>Preservative</b>	0.02% Sodium Azide
<b>Isotype</b>	IgG
<b>Purity</b>	Immunogen affinity purified
<b>Buffer</b>	Tris saline (20 mM Tris pH 7.3, 150 mM NaCl), 0.5% BSA

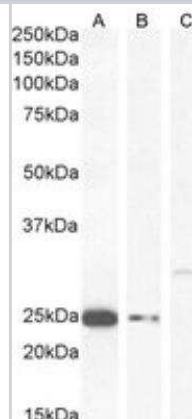
<b>Product Description</b>	
<b>Description</b>	Novus Biologicals Goat COMT Antibody (NB100-1780) is a polyclonal antibody validated for use in WB, ELISA and Flow. Anti-COMT Antibody: Cited in 3 publications. All Novus Biologicals antibodies are covered by our 100% guarantee.
<b>Host</b>	Goat
<b>Gene ID</b>	1312
<b>Gene Symbol</b>	COMT
<b>Species</b>	Human, Mouse
<b>Reactivity Notes</b>	Mouse reactivity reported in scientific literature (PMID: 19770404).
<b>Specificity/Sensitivity</b>	This antibody is expected to recognize both reported isoforms. Variants (NP_000745.1; NP_001128633.1; NP_001128634.1) encode the same isoform.
<b>Immunogen</b>	Peptide with sequence GDTKEQRILNHVLQC corresponding to N-Terminus according to NP_000745.1, NP_001128633.1, NP_001128634.1, NP_009294.1.

<b>Product Application Details</b>	
<b>Applications</b>	Western Blot, Flow Cytometry, Peptide ELISA
<b>Recommended Dilutions</b>	Western Blot 0.3 - 2 ug/mL, Flow Cytometry 10 ug/mL, Peptide ELISA Detection limit 1:4000

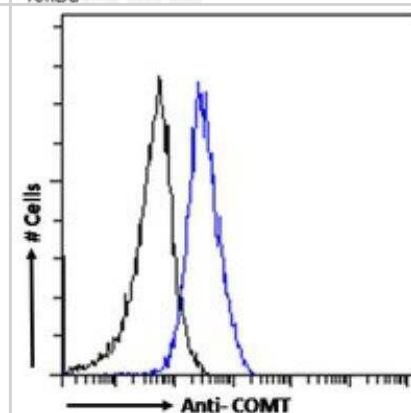


## Images

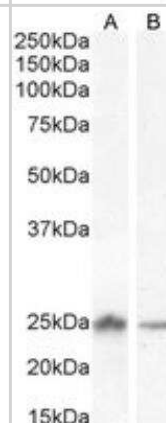
Western Blot: COMT Antibody [NB100-1780] - Staining of MCF7 (A) with antibody at 0.5 ug/mL, U251 cell lysate 1 (B) and U251 cell lysate 2 (C) (35 ug protein in RIPA buffer) with antibody at 1 ug/mL. Detected by chemiluminescence.



Flow Cytometry: COMT Antibody [NB100-1780] - Flow cytometric analysis of paraformaldehyde fixed A431 cells (blue line), permeabilized with 0.5% Triton. Primary incubation 1hr (10 ug/mL) followed by Alexa Fluor 488 secondary antibody (1 ug/mL). IgG control: Unimmunized goat IgG (black line) followed by Alexa Fluor 488 secondary antibody.



Western Blot: COMT Antibody [NB100-1780] - Staining of Human Liver (A) with antibody at 2 ug/mL and Ovary (B) lysate (35 ug protein in RIPA buffer) with antibody at 1 ug/mL. Detected by chemiluminescence.



## Publications

Tunbridge EM, Harrison PJ, Weinberger DR. Catechol-o-Methyltransferase, Cognition, and Psychosis: Val(158)Met and Beyond. *Biol Psychiatry* 2006-02-11 [PMID: 16476412]

Yao B, Harris RC, Zhang MZ. Intrarenal dopamine attenuates deoxycorticosterone acetate/high salt-induced blood pressure elevation in part through activation of a medullary cyclooxygenase 2 pathway. *Hypertension* 2009-11-01 [PMID: 19770404] (WB, Mouse)

Yang S, Yao B, Zhou Y et al. Intrarenal Dopamine Modulates Progressive Angiotensin II-Mediated Renal Injury. *American Journal of Physiology, Renal Physiology*. 2011-12-14 [PMID: 22169008]



### **Novus Biologicals USA**

10730 E. Briarwood Avenue  
Centennial, CO 80112  
USA  
Phone: 303.730.1950  
Toll Free: 1.888.506.6887  
Fax: 303.730.1966  
nb-customerservice@bio-techne.com

### **Bio-Techne Canada**

21 Canmotor Ave  
Toronto, ON M8Z 4E6  
Canada  
Phone: 905.827.6400  
Toll Free: 855.668.8722  
Fax: 905.827.6402  
canada.inquires@bio-techne.com

### **Bio-Techne Ltd**

19 Barton Lane  
Abingdon Science Park  
Abingdon, OX14 3NB, United Kingdom  
Phone: (44) (0) 1235 529449  
Free Phone: 0800 37 34 15  
Fax: (44) (0) 1235 533420  
info.EMEA@bio-techne.com

### **General Contact Information**

[www.novusbio.com](http://www.novusbio.com)  
Technical Support: nb-technical@bio-techne.com  
Orders: nb-customerservice@bio-techne.com  
General: novus@novusbio.com

### **Products Related to NB100-1780**

---

NB820-59266	Human Testis Whole Tissue Lysate (Adult Whole Normal)
NB100-1780PEP	COMT Antibody Blocking Peptide
HAF017	Rabbit anti-Goat IgG Secondary Antibody [HRP (Horseradish Peroxidase)]
HAF109	Donkey anti-Goat IgG Secondary Antibody [HRP (Horseradish Peroxidase)]
NB410-28088-1mg	Goat IgG Isotype Control

---

### **Limitations**

This product is for research use only and is not approved for use in humans or in clinical diagnosis. Primary Antibodies are guaranteed for 1 year from date of receipt.

For more information on our 100% guarantee, please visit [www.novusbio.com/guarantee](http://www.novusbio.com/guarantee)

Earn gift cards/discounts by submitting a review: [www.novusbio.com/reviews/submit/NB100-1780](http://www.novusbio.com/reviews/submit/NB100-1780)

Earn gift cards/discounts by submitting a publication using this product:  
[www.novusbio.com/publications](http://www.novusbio.com/publications)



