

Product Datasheet

Cathepsin L Antibody (33/2)

NB100-1775

Unit Size: 0.1 ml

Store at 4C short term. Aliquot and store at -20C long term. Avoid freeze-thaw cycles.

www.novusbio.com



technical@novusbio.com

Publications: 7

Protocols, Publications, Related Products, Reviews, Research Tools and Images at:
www.novusbio.com/NB100-1775

Updated 9/9/2025 v.20.1

Earn rewards for product
reviews and publications.

Submit a publication at www.novusbio.com/publications

Submit a review at www.novusbio.com/reviews/destination/NB100-1775



NB100-1775

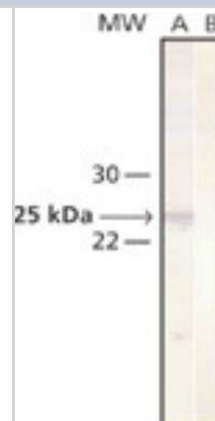
Cathepsin L Antibody (33/2)

Product Information	
Unit Size	0.1 ml
Concentration	This product is unpurified. The exact concentration of antibody is not quantifiable.
Storage	Store at 4C short term. Aliquot and store at -20C long term. Avoid freeze-thaw cycles.
Clonality	Monoclonal
Clone	33/2
Preservative	0.09% Sodium Azide
Isotype	IgG1
Purity	Unpurified
Buffer	Ascites
Product Description	
Description	Novus Biologicals Mouse Cathepsin L Antibody (33/2) (NB100-1775) is a monoclonal antibody validated for use in IHC, WB, ELISA and ICC/IF. Anti-Cathepsin L Antibody: Cited in 7 publications. All Novus Biologicals antibodies are covered by our 100% guarantee.
Host	Mouse
Gene ID	1514
Gene Symbol	CTSL
Species	Human, Mouse, Rat, Mustelid
Reactivity Notes	Cross-reacts with Mouse procathepsin L (weak), Rat cathepsin L (strong), and Mink cathepsin and procathepsin L. Does not cross-react with human cathepsin types B, D, H and S, procathepsins B and D, rat cathepsin B, and mouse procathepsins B and D. Please note that this antibody is reactive to Mouse and derived from the same host, Mouse. Additional Mouse on Mouse blocking steps may be required for IHC and ICC experiments. Please contact Technical Support for more information.
Specificity/Sensitivity	Reacts specifically with native and denatured forms of human cathepsin L and procathepsin L. Recognizes an epitope within amino acid residues GYGFEST (265-271 in procathepsin L and 169-175 in the mature cathepsin L molecule). The antibody may be used for the suppression of the malignant growth of myeloma cells. Cross-reactivity is observed with rat cathepsin L (strong), mouse procathepsin L (weak) and mink cathepsin and procathepsin L. Does not cross-react with human cathepsin types B, D, H and S, procathepsins B and D, rat cathepsin B, and mouse procathepsins B and D.
Immunogen	Purified full length native protein (Human lung cancer line EPLC 32 M1).
Product Application Details	
Applications	Western Blot, ELISA, Immunocytochemistry/ Immunofluorescence, Immunohistochemistry, Immunohistochemistry-Frozen, Microarray
Recommended Dilutions	Western Blot 1:200, ELISA 1:100-1:2000, Immunohistochemistry 1:10-1:500, Immunocytochemistry/ Immunofluorescence, Immunohistochemistry-Frozen 1:10-1:500, Microarray
Application Notes	The antibody may be used for the suppression of the malignant growth of myeloma cells. Immunocytochemistry/Immunofluorescence was reported in scientific literature.



Images

Western Blot: Cathepsin L Antibody (33/2) [NB100-1775] - Whole cell extract of Mv 1 Lu cultured mink lung was separated on SDS-PAGE and blotted with Monoclonal Anti-Cathepsin L. The antibody was developed with Goat Anti-Mouse IgG (Fab), AlkPhos Conjugate and NBT/BCIP substrate. Lane A: Antibody dilution 1:400. Lane B: Negative control (only secondary antibody).



Publications

Cason SE, Mogre SS, Holzbaur ELF, Koslover EF. Spatiotemporal analysis of axonal autophagosome-lysosome dynamics reveals limited fusion events and slow maturation *Molecular Biology of the Cell* 2022-11-01 [PMID: 36044338]

Hossain MI, Marcus JM, Lee JH et al. Restoration of CTSD (cathepsin D) and lysosomal function in stroke is neuroprotective *Autophagy* 2020-05-25 [PMID: 32450052] (WB, Mouse)

Capoccia BJ, Jin RU, Kong YY et al. The ubiquitin ligase Mindbomb 1 coordinates gastrointestinal secretory cell maturation *J Clin Invest* 2013-04-01 [PMID: 23478405] (ICC/IF, Human, Mouse)

Garcia V, Kohen P, Maldonado C et al. Transient expression of progesterone receptor and cathepsin-I in human granulosa cells during the periovulatory period *Fertility and Sterility* 2012-03-12 [PMID: 22281037] (WB, Human)

Zheng X, Chu F, Chou PM et al. Cathepsin L inhibition suppresses drug resistance in vitro and in vivo: a putative mechanism. *Am J Physiol Cell Physiol* 2009-01-01 [PMID: 18971393]

Weber E et al. Monoclonal antibodies against cathepsin L procathepsin L of different species. *Hybridoma* 16:159-66. 1997-01-01 [PMID: 9145318]

Zheng, X et al. Senescence-initiated Reversal of Drug Resistance. *Cancer Res* 64: 1773-1780. 2004-03-01 [PMID: 14996739]



Novus Biologicals USA

10730 E. Briarwood Avenue
Centennial, CO 80112
USA
Phone: 303.730.1950
Toll Free: 1.888.506.6887
Fax: 303.730.1966
nb-customerservice@bio-techne.com

Bio-Techne Canada

21 Canmotor Ave
Toronto, ON M8Z 4E6
Canada
Phone: 905.827.6400
Toll Free: 855.668.8722
Fax: 905.827.6402
canada.inquires@bio-techne.com

Bio-Techne Ltd

19 Barton Lane
Abingdon Science Park
Abingdon, OX14 3NB, United Kingdom
Phone: (44) (0) 1235 529449
Free Phone: 0800 37 34 15
Fax: (44) (0) 1235 533420
info.EMEA@bio-techne.com

General Contact Information

www.novusbio.com
Technical Support: nb-technical@bio-techne.com
Orders: nb-customerservice@bio-techne.com
General: novus@novusbio.com

Products Related to NB100-1775

NBL1-09594	Cathepsin L Overexpression Lysate
NBP2-33376H	Blue Marker Antibody (6F4-F6) [HRP]
HAF007	Goat anti-Mouse IgG Secondary Antibody [HRP]
NB7539	Goat anti-Mouse IgG (H+L) Secondary Antibody [HRP]
NBP1-97005-0.5mg	Mouse IgG1 Isotype Control (MG1)

Limitations

This product is for research use only and is not approved for use in humans or in clinical diagnosis. Primary Antibodies are guaranteed for 1 year from date of receipt.

For more information on our 100% guarantee, please visit www.novusbio.com/guarantee

Earn gift cards/discounts by submitting a review: www.novusbio.com/reviews/submit/NB100-1775

Earn gift cards/discounts by submitting a publication using this product:
www.novusbio.com/publications

