

Product Datasheet

Ribosomal Protein S6/RPS6 Antibody NB100-1595

Unit Size: 0.1 ml

Store at 4C. Do not freeze.

www.novusbio.com



technical@novusbio.com

Reviews: 1 Publications: 6

Protocols, Publications, Related Products, Reviews, Research Tools and Images at:
www.novusbio.com/NB100-1595

Updated 9/9/2025 v.20.1

**Earn rewards for product
reviews and publications.**

Submit a publication at www.novusbio.com/publications

Submit a review at www.novusbio.com/reviews/destination/NB100-1595



NB100-1595**Ribosomal Protein S6/RPS6 Antibody**

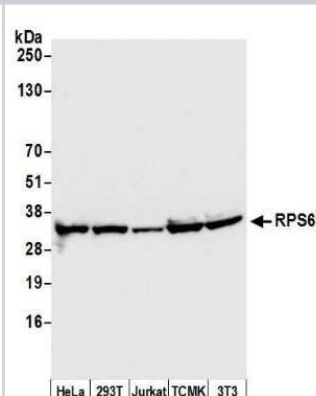
Product Information	
Unit Size	0.1 ml
Concentration	0.2 mg/ml
Storage	Store at 4C. Do not freeze.
Clonality	Polyclonal
Preservative	0.09% Sodium Azide
Isotype	IgG
Purity	Immunogen affinity purified
Buffer	TBS and 0.1% BSA
Target Molecular Weight	29 kDa

Product Description	
Description	Novus Biologicals Rabbit Ribosomal Protein S6/RPS6 Antibody (NB100-1595) is a polyclonal antibody validated for use in IHC, WB and IP. Anti-Ribosomal Protein S6/RPS6 Antibody: Cited in 6 publications. All Novus Biologicals antibodies are covered by our 100% guarantee.
Host	Rabbit
Gene ID	6194
Gene Symbol	RPS6
Species	Human, Mouse
Reactivity Notes	X. laevis (100%).
Immunogen	The immunogen recognized by this antibody maps to a region between residue 200 and the C-terminus (residue 249) of human Ribosomal Protein S6 using the numbering given in entry NP_001001.2 (GeneID 6194).

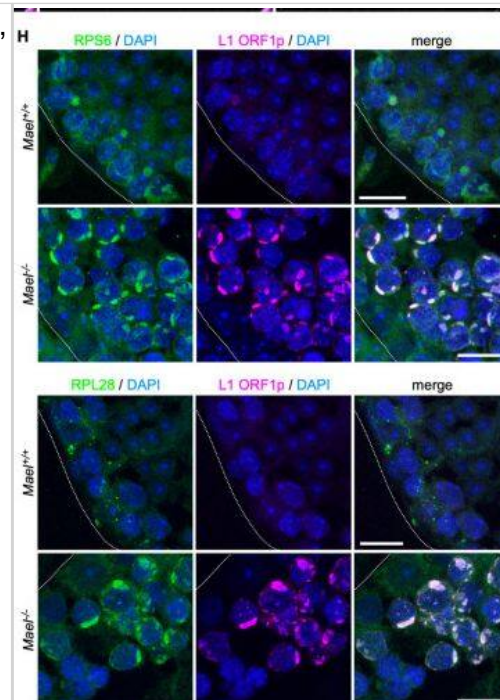
Product Application Details	
Applications	Western Blot, Immunohistochemistry-Paraffin, Immunohistochemistry, Immunoprecipitation
Recommended Dilutions	Western Blot 1:2000-1:10000, Immunohistochemistry, Immunoprecipitation 2-10 ug/mg lysate, Immunohistochemistry-Paraffin 1:200-1:1000
Application Notes	Epitope retrieval with citrate buffer pH6.0 is recommended for FFPE tissue sections.

Images

Western Blot: Ribosomal Protein S6/RPS6 Antibody [NB100-1595] - Detection of human and mouse RPS6 by western blot. Samples: Whole cell lysate (50 ug) from HeLa, HEK293T, Jurkat, mouse TCMK-1, and mouse NIH 3T3 cells prepared using NETN lysis buffer. Antibody: Affinity purified rabbit anti-RPS6 antibody NB100-1595 used for WB at 0.04 ug/ml. Detection: Chemiluminescence with an exposure time of 1 second. Previous



L1 bodies (LBs) are large cytoplasmic compartments enriched in ORF1p, L1 mRNA, and ribosomes. (A–E) Electron micrographs exemplifying the formation of LBs in *Mael*^{-/-} spermatocytes. Boxed areas in A and B identify small cytoplasmic aggregates magnified in A' and B', respectively. Boxed area in C identifies an intermediate size LB magnified in C'. D and E show more prominent LBs, partially surrounded by a bilayer membrane (red arrows). Nuc: nucleus. Cyto: cytoplasm. NE: nuclear envelope. (F) Immunofluorescence staining of L1 ORF1p on *Mael*^{-/-} spermatocytes shows ORF1p accumulation in LBs (left panel, magenta). 3D reconstruction of LBs (magenta) and nuclei (blue) (middle and right panels); numbers [1–5] are used to label corresponding cells. Scale bars: 5 μ m. (G) HCR RNA-FISH of L1 RNA (green) and immunofluorescence staining of L1 ORF1p (magenta) on *Mael*^{+/-} and *Mael*^{-/-} testis sections. Scale bars: 5 μ m. (H) Double immunofluorescence staining of ribosomal protein S6 (RPS6, top two rows, green) or L28 (RPL28, bottom two rows, green) and L1 ORF1p (magenta) showing their colocalization in LBs. Dotted white lines mark seminiferous tubule boundaries. Scale bars: 15 μ m. See also S1 Fig. Image collected and cropped by CiteAb from the following open publication (<https://pubmed.ncbi.nlm.nih.gov/37307272>), licensed under a CC-BY license. Not internally tested by Novus Biologicals.



Publications

Schatton D, Di Pietro G, Szczepanowska K et al. CLUH controls astrin-1 expression to couple mitochondrial metabolism to cell cycle progression *eLife* 2022-05-13 [PMID: 35559794] (Western Blot, Mouse)

De Luca C, Gupta A, Bortvin A Retrotransposon LINE-1 bodies in the cytoplasm of piRNA-deficient mouse spermatocytes: Ribonucleoproteins overcoming the integrated stress response *PLoS genetics* 2023-06-01 [PMID: 37307272] (IF, WB, Mouse)

Zaganjor E, Yoon H, Spinelli JB et al. SIRT4 is an early regulator of branched-chain amino acid catabolism that promotes adipogenesis *Cell reports* 2021-07-13 [PMID: 34260923] (WB)

Pla-Martin D, Schatton D, Wiederstein JI et al. CLUH granules coordinate translation of mitochondrial proteins with mTORC1 signaling and mitophagy *EMBO J.* 2020-03-09 [PMID: 32149416] (WB, Mouse)

Gao J, Schatton D, Martinelli P et al. CLUH regulates mitochondrial biogenesis by binding mRNAs of nuclear-encoded mitochondrial proteins. CLUH regulates mitochondrial biogenesis by binding mRNAs of nuclear-encoded mitochondrial proteins. 2014-10-27 [PMID: 25349259] (WB, Human, Mouse)

Castaneda J, Genzor P, van der Heijden GW et al. Reduced pachytene piRNAs and translation underlie spermiogenic arrest in *Maelstrom* mutant mice. *EMBO J.* 2014-07-25 [PMID: 25063675] (WB, Mouse)

Details:

RPS6 antibody/rabbit anti-RPS6 used in WB assay to verify sucrose gradient performance in sucrose density gradient sedimentation profiles testing of MAEL (*Maelstrom*) and MIWI (Piwi partner of pachytene piRNAs) in native protein lysates from adult WT mouse testes - puromycin/untreated and EDTA/untreated samples (Figure 8A, B, C).



Novus Biologicals USA

10730 E. Briarwood Avenue
Centennial, CO 80112
USA
Phone: 303.730.1950
Toll Free: 1.888.506.6887
Fax: 303.730.1966
nb-customerservice@bio-techne.com

Bio-Techne Canada

21 Canmotor Ave
Toronto, ON M8Z 4E6
Canada
Phone: 905.827.6400
Toll Free: 855.668.8722
Fax: 905.827.6402
canada.inquires@bio-techne.com

Bio-Techne Ltd

19 Barton Lane
Abingdon Science Park
Abingdon, OX14 3NB, United Kingdom
Phone: (44) (0) 1235 529449
Free Phone: 0800 37 34 15
Fax: (44) (0) 1235 533420
info.EMEA@bio-techne.com

General Contact Information

www.novusbio.com
Technical Support: nb-technical@bio-techne.com
Orders: nb-customerservice@bio-techne.com
General: novus@novusbio.com

Products Related to NB100-1595

NBP2-33376H	Blue Marker Antibody (6F4-F6) [HRP]
HAF008	Goat anti-Rabbit IgG Secondary Antibody [HRP]
NB7160	Goat anti-Rabbit IgG (H+L) Secondary Antibody [HRP]
NBP2-24891	Rabbit IgG Isotype Control

Limitations

This product is for research use only and is not approved for use in humans or in clinical diagnosis. Primary Antibodies are guaranteed for 1 year from date of receipt.

For more information on our 100% guarantee, please visit www.novusbio.com/guarantee

Earn gift cards/discounts by submitting a review: www.novusbio.com/reviews/submit/NB100-1595

Earn gift cards/discounts by submitting a publication using this product:
www.novusbio.com/publications

