

Product Datasheet

SHIP2/INPPL1 Antibody - BSA Free NB100-1592

Unit Size: 100 ul

Store at 4C. Do not freeze.

www.novusbio.com



technical@novusbio.com

Publications: 1

Protocols, Publications, Related Products, Reviews, Research Tools and Images at:
www.novusbio.com/NB100-1592

Updated 9/9/2025 v.20.1

Earn rewards for product
reviews and publications.

Submit a publication at www.novusbio.com/publications

Submit a review at www.novusbio.com/reviews/destination/NB100-1592



NB100-1592**SHIP2/INPPL1 Antibody - BSA Free**

Product Information	
Unit Size	100 ul
Concentration	1.0 mg/ml
Storage	Store at 4C. Do not freeze.
Clonality	Polyclonal
Preservative	0.09% Sodium Azide
Isotype	IgG
Purity	Immunogen affinity purified
Buffer	Tris-Citrate/Phosphate (pH 7.0 - 8.0)

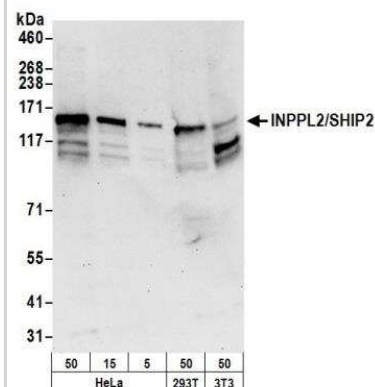
Product Description	
Description	Novus Biologicals Rabbit SHIP2/INPPL1 Antibody - BSA Free (NB100-1592) is a polyclonal antibody validated for use in IHC, WB and IP. Anti-SHIP2/INPPL1 Antibody: Cited in 1 publication. All Novus Biologicals antibodies are covered by our 100% guarantee.
Host	Rabbit
Gene ID	3636
Gene Symbol	INPPL1
Species	Human, Mouse
Immunogen	The immunogen recognized by this antibody maps to a region between residues 100 and 150 of human inositol polyphosphate phosphatase-like 1 using the numbering given in entry NP_001558.2 (GeneID 3636).

Product Application Details	
Applications	Western Blot, Immunohistochemistry-Paraffin, Immunohistochemistry, Immunoprecipitation
Recommended Dilutions	Western Blot 1:2000-1:20000, Immunohistochemistry 1:500 - 1:2000, Immunoprecipitation 2-10 ug/mg of lysate, Immunohistochemistry-Paraffin 1:500 - 1:2000
Application Notes	Epitope retrieval with Citrate buffer pH 6.0 or Tris-EDTA pH9.0 is recommended for FFPE tissue sections.

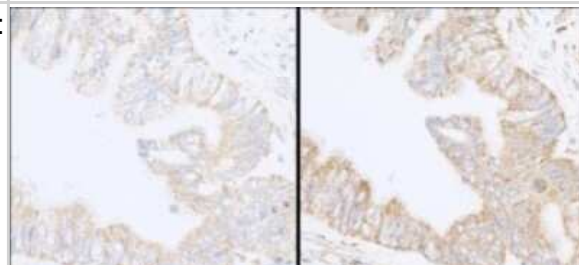


Images

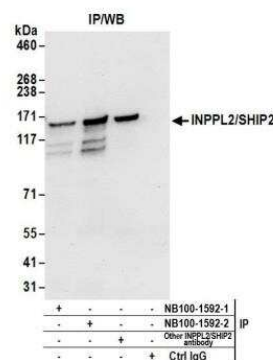
Western Blot: SHIP2/INPPL1 Antibody [NB100-1592] - Detection of Human and Mouse INPPL2/SHIP2 by Western Blot. Samples: Whole cell lysate (50, 15, 5 ug) from HeLa and (50 ug) from 293T and mouse NIH3T3 cells prepared using NETN lysis buffer. Antibody: Affinity purified rabbit anti-INPPL2/SHIP2 antibody NB100-1592 used for WB at 0.1 ug/ml. Detection: Chemiluminescence with an exposure time of 30 seconds.



Immunohistochemistry: SHIP2/INPPL1 Antibody [NB100-1592] - Sample: FFPE serial sections of human colon carcinoma. Antibody: Affinity purified rabbit anti-expndtw-6 INPPL1/SHIP2 Cat. No. Lot 1 (left) and Lot 2 (right) used at a dilution of 1:1,000 (1ug/ml). Detection: DAB



Immunoprecipitation: SHIP2/INPPL1 Antibody [NB100-1592] - Detection of human INPPL2/SHIP2 by western blot of immunoprecipitates. Samples: Whole cell lysate (0.5 or 1.0 mg per IP reaction; 20% of IP loaded) from HeLa cells prepared using NETN lysis buffer. Antibodies: Affinity purified rabbit anti-INPPL2/SHIP2 antibody NB100-1592 (lot NB100-1592-2) used for IP at 6 ug per reaction. INPPL2/SHIP2 was also immunoprecipitated by a previous lot of this antibody (NB100-1592-1) and another rabbit anti-INPPL2/SHIP2 antibody. For blotting immunoprecipitated INPPL2/SHIP2, NB100-1592 was used at 0.4 ug/ml. Detection: Chemiluminescence with an exposure time of 10 seconds.



Publications

Yoshinaga S, Ohkubo T, Sasaki S et al. A phosphatidylinositol lipids system, lamellipodin, and Ena/VASP regulate dynamic morphology of multipolar migrating cells in the developing cerebral cortex. *J Neurosci* 2012-08-01 [PMID: 22915108]



Novus Biologicals USA

10730 E. Briarwood Avenue
Centennial, CO 80112
USA
Phone: 303.730.1950
Toll Free: 1.888.506.6887
Fax: 303.730.1966
nb-customerservice@bio-techne.com

Bio-Techne Canada

21 Canmotor Ave
Toronto, ON M8Z 4E6
Canada
Phone: 905.827.6400
Toll Free: 855.668.8722
Fax: 905.827.6402
canada.inquires@bio-techne.com

Bio-Techne Ltd

19 Barton Lane
Abingdon Science Park
Abingdon, OX14 3NB, United Kingdom
Phone: (44) (0) 1235 529449
Free Phone: 0800 37 34 15
Fax: (44) (0) 1235 533420
info.EMEA@bio-techne.com

General Contact Information

www.novusbio.com
Technical Support: nb-technical@bio-techne.com
Orders: nb-customerservice@bio-techne.com
General: novus@novusbio.com

Products Related to NB100-1592

NBP2-33376H	Blue Marker Antibody (6F4-F6) [HRP]
HAF008	Goat anti-Rabbit IgG Secondary Antibody [HRP]
NB7160	Goat anti-Rabbit IgG (H+L) Secondary Antibody [HRP]
NBP2-24891	Rabbit IgG Isotype Control

Limitations

This product is for research use only and is not approved for use in humans or in clinical diagnosis. Primary Antibodies are guaranteed for 1 year from date of receipt.

For more information on our 100% guarantee, please visit www.novusbio.com/guarantee

Earn gift cards/discounts by submitting a review: www.novusbio.com/reviews/submit/NB100-1592

Earn gift cards/discounts by submitting a publication using this product:
www.novusbio.com/publications

