

Product Datasheet

Ribosomal Protein S6/RPS6 [p Ser235, p Ser236] Antibody NB100-1553

Unit Size: 0.1 ml

Store at 4C. Do not freeze.

www.novusbio.com



technical@novusbio.com

Protocols, Publications, Related Products, Reviews, Research Tools and Images at:
www.novusbio.com/NB100-1553

Updated 9/9/2025 v.20.1

Earn rewards for product
reviews and publications.

Submit a publication at www.novusbio.com/publications

Submit a review at www.novusbio.com/reviews/destination/NB100-1553



NB100-1553**Ribosomal Protein S6/RPS6 [p Ser235, p Ser236] Antibody**

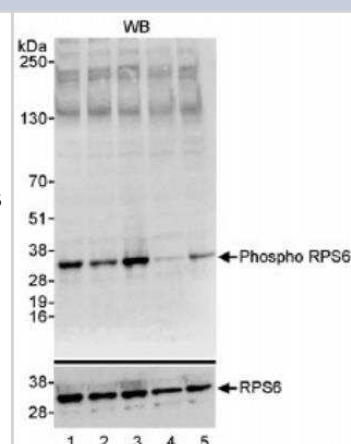
Product Information	
Unit Size	0.1 ml
Concentration	0.2 mg/ml
Storage	Store at 4C. Do not freeze.
Clonality	Polyclonal
Preservative	0.09% Sodium Azide
Isotype	IgG
Purity	Immunogen affinity purified
Buffer	TBS and 0.1% BSA

Product Description	
Description	Novus Biologicals Rabbit Ribosomal Protein S6/RPS6 [p Ser235, p Ser236] Antibody (NB100-1553) is a polyclonal antibody validated for use in IHC and WB. All Novus Biologicals antibodies are covered by our 100% guarantee.
Host	Rabbit
Gene ID	6194
Gene Symbol	RPS6
Species	Human
Immunogen	Immunogen for this antibody was a phosphorylated synthetic peptide, which represented a portion of human Ribosomal Protein S6 (GenelD 6194) around serine 235 and serine 236 according to the numbering given in entry NP_001001.2.

Product Application Details	
Applications	Western Blot, Immunohistochemistry
Recommended Dilutions	Western Blot 1:2500-1:10000, Immunohistochemistry 1:10-1:500

Images

Western Blot: Ribosomal Protein S6/RPS6 [p Ser235, p Ser236] Antibody [NB100-1553] - Detection of Human Phospho RPS6 (S235/S236) by Western Blot. Samples: Whole cell lysate (35 mcg) from HeLa cells. Treatments consisted of growth in serum containing media (lane 1) or cultured for 24 hours in serum free media (lanes 2 to 5). At 24h, serum was replaced for 1 h (lanes 2 and 3) or serum starvation was continued (lanes 4 and 5) without rapamycin (lanes 3 and 5) with 50nM Rapamycin (lanes 2 and 4). Antibodies: Affinity purified rabbit anti-phospho RPS6 (S235/S236) antibody NB100-1553 used at 0.04 mcg/ml (upper panel). The blot was stripped and re-blotted for total RPS6 using affinity purified rabbit anti-RPS6 antibody NB100-1595 at 0.04 mcg/ml. Detection: Chemiluminescence with exposure times of 10 seconds (upper panel) or 30 seconds (lower panel).





Novus Biologicals USA

10730 E. Briarwood Avenue
Centennial, CO 80112
USA
Phone: 303.730.1950
Toll Free: 1.888.506.6887
Fax: 303.730.1966
nb-customerservice@bio-techne.com

Bio-Techne Canada

21 Canmotor Ave
Toronto, ON M8Z 4E6
Canada
Phone: 905.827.6400
Toll Free: 855.668.8722
Fax: 905.827.6402
canada.inquires@bio-techne.com

Bio-Techne Ltd

19 Barton Lane
Abingdon Science Park
Abingdon, OX14 3NB, United Kingdom
Phone: (44) (0) 1235 529449
Free Phone: 0800 37 34 15
Fax: (44) (0) 1235 533420
info.EMEA@bio-techne.com

General Contact Information

www.novusbio.com
Technical Support: nb-technical@bio-techne.com
Orders: nb-customerservice@bio-techne.com
General: novus@novusbio.com

Products Related to NB100-1553

NBP2-33376H	Blue Marker Antibody (6F4-F6) [HRP]
HAF008	Goat anti-Rabbit IgG Secondary Antibody [HRP]
NB7160	Goat anti-Rabbit IgG (H+L) Secondary Antibody [HRP]
NBP2-24891	Rabbit IgG Isotype Control

Limitations

This product is for research use only and is not approved for use in humans or in clinical diagnosis. Primary Antibodies are guaranteed for 1 year from date of receipt.

For more information on our 100% guarantee, please visit www.novusbio.com/guarantee

Earn gift cards/discounts by submitting a review: www.novusbio.com/reviews/submit/NB100-1553

Earn gift cards/discounts by submitting a publication using this product:
www.novusbio.com/publications

