

Product Datasheet

p70 S6 Kinase beta/S6K2 Antibody NB100-1545

Unit Size: 0.1 ml

Store at 4C. Do not freeze.

www.novusbio.com



technical@novusbio.com

Publications: 2

Protocols, Publications, Related Products, Reviews, Research Tools and Images at:
www.novusbio.com/NB100-1545

Updated 9/9/2025 v.20.1

Earn rewards for product
reviews and publications.

Submit a publication at www.novusbio.com/publications

Submit a review at www.novusbio.com/reviews/destination/NB100-1545



NB100-1545**p70 S6 Kinase beta/S6K2 Antibody**

Product Information	
Unit Size	0.1 ml
Concentration	0.2 mg/ml
Storage	Store at 4C. Do not freeze.
Clonality	Polyclonal
Preservative	0.09% Sodium Azide
Isotype	IgG
Purity	Immunogen affinity purified
Buffer	TBS and 0.1% BSA
Target Molecular Weight	53 kDa

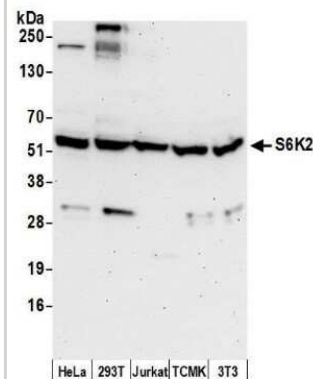
Product Description	
Description	Novus Biologicals Rabbit p70 S6 Kinase beta/S6K2 Antibody (NB100-1545) is a polyclonal antibody validated for use in WB and IP. Anti-p70 S6 Kinase beta/S6K2 Antibody: Cited in 2 publications. All Novus Biologicals antibodies are covered by our 100% guarantee.
Host	Rabbit
Gene ID	6199
Gene Symbol	RPS6KB2
Species	Human, Mouse
Immunogen	The immunogen recognized by this antibody maps to a region between residue 430 and the C-terminus (residue 482) of human Ribosomal Protein S6 Kinase, 70kda, polypeptide 2 using the numbering given in entry NP_003943.2 (GeneID 6199).

Product Application Details	
Applications	Western Blot, Immunoprecipitation
Recommended Dilutions	Western Blot 1:2000-1:10000, Immunoprecipitation 2 -6 ug/mg of lysate

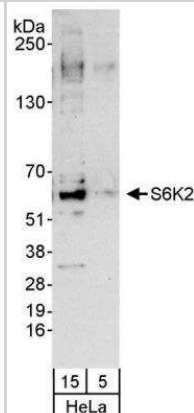


Images

Western Blot: p70 S6 Kinase beta/S6K2 Antibody [NB100-1545] - Detection of human and mouse S6K2 by western blot. Samples: Whole cell lysate (50 μ g) from HeLa, HEK293T, Jurkat, mouse TCMK-1, and mouse NIH 3T3 cells prepared using NETN lysis buffer. Antibody: Affinity purified rabbit anti-S6K2 antibody NB100-1545 used for WB at 0.1 μ g/ml. Detection: Chemiluminescence with an exposure time of 30 seconds.



Western Blot: p70 S6 Kinase beta/S6K2 Antibody [NB100-1545] - Whole cell lysate (5 and 15 μ g) from HeLa cells. Antibody used at 0.04 μ g/ml for WB.



Publications

Nardella C, Lunardi A, Fedele G et al. Differential expression of S6K2 dictates tissue-specific requirement for S6K1 in mediating aberrant mTORC1 signaling and tumorigenesis. *Cancer Res* 2011-05-01 [PMID: 21444676]

Sridharan S, Basu A. S6 kinase 2 promotes breast cancer cell survival via Akt. *Cancer Res* 2011-04-01 [PMID: 21427355]



Novus Biologicals USA

10730 E. Briarwood Avenue
Centennial, CO 80112
USA
Phone: 303.730.1950
Toll Free: 1.888.506.6887
Fax: 303.730.1966
nb-customerservice@bio-techne.com

Bio-Techne Canada

21 Canmotor Ave
Toronto, ON M8Z 4E6
Canada
Phone: 905.827.6400
Toll Free: 855.668.8722
Fax: 905.827.6402
canada.inquires@bio-techne.com

Bio-Techne Ltd

19 Barton Lane
Abingdon Science Park
Abingdon, OX14 3NB, United Kingdom
Phone: (44) (0) 1235 529449
Free Phone: 0800 37 34 15
Fax: (44) (0) 1235 533420
info.EMEA@bio-techne.com

General Contact Information

www.novusbio.com
Technical Support: nb-technical@bio-techne.com
Orders: nb-customerservice@bio-techne.com
General: novus@novusbio.com

Products Related to NB100-1545

NBL1-15575	p70 S6 Kinase beta/S6K2 Overexpression Lysate
NBP2-33376H	Blue Marker Antibody (6F4-F6) [HRP]
HAF008	Goat anti-Rabbit IgG Secondary Antibody [HRP]
NB7160	Goat anti-Rabbit IgG (H+L) Secondary Antibody [HRP]
NBP2-24891	Rabbit IgG Isotype Control

Limitations

This product is for research use only and is not approved for use in humans or in clinical diagnosis. Primary Antibodies are guaranteed for 1 year from date of receipt.

For more information on our 100% guarantee, please visit www.novusbio.com/guarantee

Earn gift cards/discounts by submitting a review: www.novusbio.com/reviews/submit/NB100-1545

Earn gift cards/discounts by submitting a publication using this product:
www.novusbio.com/publications

