

Product Datasheet

RXR alpha/NR2B1 Antibody NB100-1466

Unit Size: 0.1 mg

Store at -20C. Avoid freeze-thaw cycles.

www.novusbio.com



technical@novusbio.com

Publications: 2

Protocols, Publications, Related Products, Reviews, Research Tools and Images at:
www.novusbio.com/NB100-1466

Updated 9/9/2025 v.20.1

Earn rewards for product
reviews and publications.

Submit a publication at www.novusbio.com/publications

Submit a review at www.novusbio.com/reviews/destination/NB100-1466



NB100-1466

RXR alpha/NR2B1 Antibody

Product Information	
Unit Size	0.1 mg
Concentration	0.5 mg/ml
Storage	Store at -20C. Avoid freeze-thaw cycles.
Clonality	Polyclonal
Preservative	0.02% Sodium Azide
Isotype	IgG
Purity	Immunogen affinity purified
Buffer	Tris saline (20 mM Tris pH 7.3, 150 mM NaCl), 0.5% BSA

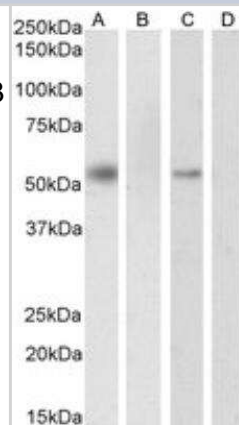
Product Description	
Description	Novus Biologicals Goat RXR alpha/NR2B1 Antibody (NB100-1466) is a polyclonal antibody validated for use in WB, ELISA, Flow and ICC/IF. Anti-RXR alpha/NR2B1 Antibody: Cited in 2 publications. All Novus Biologicals antibodies are covered by our 100% guarantee.
Host	Goat
Gene ID	6256
Gene Symbol	RXRA
Species	Human
Specificity/Sensitivity	This antibody is expected to recognise an epitope corresponding to aa 14-28 of human RXR alpha protein and does not cross-react with either RXR beta or gamma.
Immunogen	Peptide with sequence CQVNSSLTSPTRGSM corresponding to internal region according to NP_002948.1.

Product Application Details	
Applications	Western Blot, Flow Cytometry, Immunocytochemistry/ Immunofluorescence, Peptide ELISA
Recommended Dilutions	Western Blot 0.3 - 1 ug/mL, Flow Cytometry 10 ug/mL, Immunocytochemistry/ Immunofluorescence 10 ug/mL, Peptide ELISA Detection limit 1:32000
Application Notes	Western blot: Approx 55-60 kDa band observed in nuclear lysates of cell lines HeLa and K562 (calculated MW of 50.8 kDa according to NP_002948.1). This molecular weight is routinely observed by other sources and was successfully blocked by incubation with the immunizing peptide.

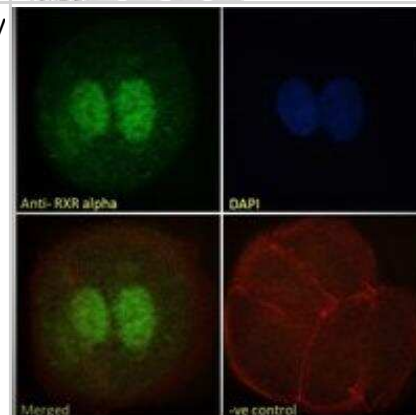


Images

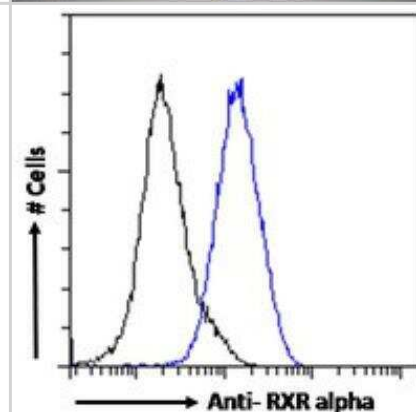
Western Blot: RXR alpha/NR2B1 Antibody [NB100-1466] - Western blot analysis of nuclear HeLa cell lysate (A) + peptide (B) and nuclear K562 cell lysate (C) + peptide (D). 35 ug protein in RIPA buffer. Antibody at 0.3 ug/mL. Detected by chemiluminescence.



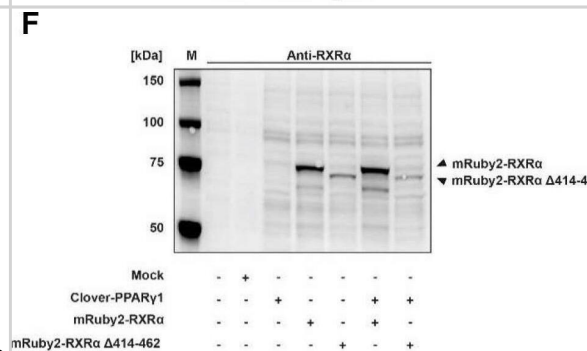
Immunocytochemistry/Immunofluorescence: RXR alpha/NR2B1 Antibody [NB100-1466] - Immunofluorescence analysis of paraformaldehyde fixed MCF7 cells, permeabilized with 0.15% Triton. Primary incubation 1hr (10 ug/mL) followed by Alexa Fluor 488 secondary antibody (2 ug/mL), showing strong nuclear staining. Actin filaments were stained with phalloidin (red) and the nuclear stain is DAPI (blue). Negative control: Unimmunized goat IgG (10 ug/mL) followed by Alexa Fluor 488 secondary antibody (2 ug/mL).



Flow Cytometry: RXR alpha/NR2B1 Antibody [NB100-1466] - Flow cytometric analysis of paraformaldehyde fixed MCF7 cells (blue line), permeabilized with 0.5% Triton. Primary incubation 1hr (10 ug/mL) followed by Alexa Fluor 488 secondary antibody (1 ug/mL). IgG control: Unimmunized goat IgG (10 ug/mL) followed by Alexa Fluor 488 secondary antibody.



Determination of Clover-PPAR γ 1, mRuby2-RXR α and mRuby2-RXR α Δ 414-462 protein expression. Graphical scheme of the structure of the full length human PPAR γ 1 protein (A); the full length human RXR α protein (B) and the human RXR α deletion construct with a C-terminal absence of the sequence AA 414-462 (C). PPAR γ 1 was N-terminally labeled with the green fluorophore Clover and both of the two RXR α constructs N-terminally with the red fluorophore mRuby2. Clover-PPAR γ 1, mRuby2-RXR α and mRuby2-RXR α Δ 414-462 protein expressions are shown in total HEK293T cell lysates visualized by Western blot analysis against human PPAR γ (D), GFP (E), human RXR α (F) and tRFP (G). Images are representative of experiments which were performed at least three times. Image collected and cropped by CiteAb from the following open publication (<https://pubmed.ncbi.nlm.nih.gov/31534496>), licensed under a CC-BY license. Not internally tested by Novus Biologicals.



Publications

Trumper V, von Knethen A, PreuB A et al. Flow cytometry-based FRET identifies binding intensities in PPAR gamma 1 protein-protein interactions in living cells Theranostics [PMID: 31534496] (WB, Human)

Claudel T, Leibowitz MD, Fievet C et al. Reduction of atherosclerosis in apolipoprotein E knockout mice by activation of the retinoid X receptor. Proc Natl Acad Sci U S A 2001-02-27 [PMID: 11226287]





Novus Biologicals USA

10730 E. Briarwood Avenue
Centennial, CO 80112
USA
Phone: 303.730.1950
Toll Free: 1.888.506.6887
Fax: 303.730.1966
nb-customerservice@bio-techne.com

Bio-Techne Canada

21 Canmotor Ave
Toronto, ON M8Z 4E6
Canada
Phone: 905.827.6400
Toll Free: 855.668.8722
Fax: 905.827.6402
canada.inquires@bio-techne.com

Bio-Techne Ltd

19 Barton Lane
Abingdon Science Park
Abingdon, OX14 3NB, United Kingdom
Phone: (44) (0) 1235 529449
Free Phone: 0800 37 34 15
Fax: (44) (0) 1235 533420
info.EMEA@bio-techne.com

General Contact Information

www.novusbio.com
Technical Support: nb-technical@bio-techne.com
Orders: nb-customerservice@bio-techne.com
General: novus@novusbio.com

Products Related to NB100-1466

NBP2-33376H	Blue Marker Antibody (6F4-F6) [HRP]
HAF017	Rabbit anti-Goat IgG Secondary Antibody [HRP (Horseradish Peroxidase)]
HAF109	Donkey anti-Goat IgG Secondary Antibody [HRP (Horseradish Peroxidase)]
NB410-28088-1mg	Goat IgG Isotype Control

Limitations

This product is for research use only and is not approved for use in humans or in clinical diagnosis. Primary Antibodies are guaranteed for 1 year from date of receipt.

For more information on our 100% guarantee, please visit www.novusbio.com/guarantee

Earn gift cards/discounts by submitting a review: www.novusbio.com/reviews/submit/NB100-1466

Earn gift cards/discounts by submitting a publication using this product:
www.novusbio.com/publications



