

# Product Datasheet

## FHL1 Antibody NB100-1461

Unit Size: 0.1 mg

Store at -20C. Avoid freeze-thaw cycles.

[www.novusbio.com](http://www.novusbio.com)



[technical@novusbio.com](mailto:technical@novusbio.com)

### Publications: 2

Protocols, Publications, Related Products, Reviews, Research Tools and Images at:  
[www.novusbio.com/NB100-1461](http://www.novusbio.com/NB100-1461)

Updated 9/9/2025 v.20.1

Earn rewards for product  
reviews and publications.

Submit a publication at [www.novusbio.com/publications](http://www.novusbio.com/publications)

Submit a review at [www.novusbio.com/reviews/destination/NB100-1461](http://www.novusbio.com/reviews/destination/NB100-1461)



**NB100-1461**

## FHL1 Antibody

Product Information	
Unit Size	0.1 mg
Concentration	0.5 mg/ml
Storage	Store at -20C. Avoid freeze-thaw cycles.
Clonality	Polyclonal
Preservative	0.02% Sodium Azide
Isotype	IgG
Purity	Immunogen affinity purified
Buffer	Tris saline (20 mM Tris pH 7.3, 150 mM NaCl), 0.5% BSA

Product Description	
Description	Novus Biologicals Goat FHL1 Antibody (NB100-1461) is a polyclonal antibody validated for use in WB and ELISA. Anti-FHL1 Antibody: Cited in 2 publications. All Novus Biologicals antibodies are covered by our 100% guarantee.
Host	Goat
Gene ID	2273
Gene Symbol	FHL1
Species	Human, Mouse
Specificity/Sensitivity	This antibody is specific for the FHL-1 isoform B (SLIMMER) and is expected to recognise an epitope corresponding to aa 233-246 of human SLIMMER protein.
Immunogen	Peptide with sequence CTVSRVSHPVSKARK corresponding to internal region according to AAC72886.1.

Product Application Details	
Applications	Western Blot, Peptide ELISA
Recommended Dilutions	Western Blot 1:100-1:2000, Peptide ELISA Detection limit 1:128000
Application Notes	WB: Approx. 30 kDa band observed in human heart lysates (calculated MW of 36.3 kDa band according to AAC72886) is consistent with scientific literature (PMID: 1048092).

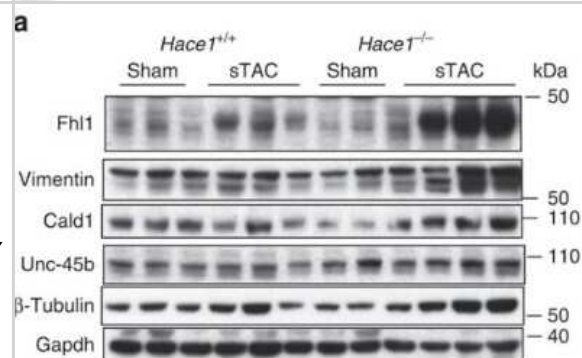


## Images

Western Blot: FHL1 Antibody [NB100-1461] - (0.01ug/ml) staining of Human Heart lysate (35ug protein in RIPA buffer). Primary incubation was 1 hour. Detected by chemiluminescence.



Western Blot: FHL1 Antibody [NB100-1461] - Proteins interacting with HACE1 accumulate in Hace1<sup>-/-</sup>-sTAC heart. Representative western blots show increased accumulation of some of the HACE1-interacting proteins in the Hace1<sup>-/-</sup>-sTAC myocardium. n=3 mice per group, error bars represent s.e.m., P-value between KO and WT sTAC as indicated (one-way analysis of variance). GAPDH was used as a loading control. Image collected and cropped by CiteAb from the following publication (<https://www.nature.com/articles/ncomms4430>), licensed under a CC-BY license.



## Publications

Brown S, McGrath MJ, Ooms LM et al. Characterization of two isoforms of the skeletal muscle LIM protein 1, SLIM1. Localization of SLIM1 at focal adhesions and the isoform slimmer in the nucleus of myoblasts and cytoplasm of myotubes suggests distinct roles in the cytoskeleton and in nuclear-cytoplasmic communication. J Biol Chem 1999-09-17 [PMID: 10480922]

Zhang L, Chen X, Sharma P et al. HACE1-dependent protein degradation provides cardiac protection in response to haemodynamic stress. Nat Commun 2014-03-11 [PMID: 24614889] (WB, Mouse)



### **Novus Biologicals USA**

10730 E. Briarwood Avenue  
Centennial, CO 80112  
USA  
Phone: 303.730.1950  
Toll Free: 1.888.506.6887  
Fax: 303.730.1966  
nb-customerservice@bio-techne.com

### **Bio-Techne Canada**

21 Canmotor Ave  
Toronto, ON M8Z 4E6  
Canada  
Phone: 905.827.6400  
Toll Free: 855.668.8722  
Fax: 905.827.6402  
canada.inquires@bio-techne.com

### **Bio-Techne Ltd**

19 Barton Lane  
Abingdon Science Park  
Abingdon, OX14 3NB, United Kingdom  
Phone: (44) (0) 1235 529449  
Free Phone: 0800 37 34 15  
Fax: (44) (0) 1235 533420  
info.EMEA@bio-techne.com

### **General Contact Information**

www.novusbio.com  
Technical Support: nb-technical@bio-techne.com  
Orders: nb-customerservice@bio-techne.com  
General: novus@novusbio.com

### **Products Related to NB100-1461**

---

NB820-59217	Human Heart Whole Tissue Lysate (Adult Whole Normal)
NBP2-33376H	Blue Marker Antibody (6F4-F6) [HRP]
HAF017	Rabbit anti-Goat IgG Secondary Antibody [HRP (Horseradish Peroxidase)]
HAF109	Donkey anti-Goat IgG Secondary Antibody [HRP (Horseradish Peroxidase)]
NB410-28088-1mg	Goat IgG Isotype Control

---

### **Limitations**

This product is for research use only and is not approved for use in humans or in clinical diagnosis. Primary Antibodies are guaranteed for 1 year from date of receipt.

For more information on our 100% guarantee, please visit [www.novusbio.com/guarantee](http://www.novusbio.com/guarantee)

Earn gift cards/discounts by submitting a review: [www.novusbio.com/reviews/submit/NB100-1461](http://www.novusbio.com/reviews/submit/NB100-1461)

Earn gift cards/discounts by submitting a publication using this product:  
[www.novusbio.com/publications](http://www.novusbio.com/publications)



