

# Product Datasheet

## CPEB1 Antibody NB100-1437

Unit Size: 0.1 mg

Store at -20C. Avoid freeze-thaw cycles.

[www.novusbio.com](http://www.novusbio.com)



[technical@novusbio.com](mailto:technical@novusbio.com)

### Publications: 3

Protocols, Publications, Related Products, Reviews, Research Tools and Images at:  
[www.novusbio.com/NB100-1437](http://www.novusbio.com/NB100-1437)

Updated 9/9/2025 v.20.1

Earn rewards for product  
reviews and publications.

Submit a publication at [www.novusbio.com/publications](http://www.novusbio.com/publications)

Submit a review at [www.novusbio.com/reviews/destination/NB100-1437](http://www.novusbio.com/reviews/destination/NB100-1437)



**NB100-1437**

## CPEB1 Antibody

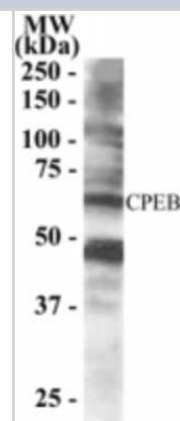
Product Information	
Unit Size	0.1 mg
Concentration	0.5 mg/ml
Storage	Store at -20C. Avoid freeze-thaw cycles.
Clonality	Polyclonal
Preservative	0.02% Sodium Azide
Isotype	IgG
Purity	Immunogen affinity purified
Buffer	Tris saline (20 mM Tris pH 7.3, 150 mM NaCl), 0.5% BSA

Product Description	
Description	Novus Biologicals Goat CPEB1 Antibody (NB100-1437) is a polyclonal antibody validated for use in WB and ELISA. Anti-CPEB1 Antibody: Cited in 3 publications. All Novus Biologicals antibodies are covered by our 100% guarantee.
Host	Goat
Gene ID	64506
Gene Symbol	CPEB1
Species	Human
Specificity/Sensitivity	This antibody is expected to recognise alle reported isoforms. Variants (NP_001073002.1; NP_001073003.1) encode the same isoform.
Immunogen	Peptide with sequence C-PLMRNQKNRDSS corresponding to C-Terminus according to NP_085097.3, NP_001073001.1, NP_001073002.1, NP_001073003.1.

Product Application Details	
Applications	Western Blot, Peptide ELISA
Recommended Dilutions	Western Blot 0.5 - 2 ug/ml, Peptide ELISA Detection limit 1:128000
Application Notes	WB: Approx. 65-70 kDa band observed in human brain lysates (predicted MW of 65 kDa band according to NP_085097). Please note this band was always accompanied by a slightly stronger band at approx. 48 kDa and both bands could be blocked by incubation with the immunizing peptide.

**Images**

Western Blot: CPEB1 Antibody [NB100-1437] - Staining of human brain lysate (RIPA buffer, 35 ug total protein per lane) using this antibody at 0.5 ug/ml. Detected by western blot using chemiluminescence.



## Publications

Kratassiouk G, Pritchard LL, Cuvellier S et al. The WEE1 regulators CPEB1 and miR-15b switch from inhibitor to activators at G2/M. *Cell Cycle*. 2016-03-03 [PMID: 27027998]

Welk JF, Charlesworth A, Smith GD, MacNicol AM. Identification and characterization of the gene encoding human cytoplasmic polyadenylation element binding protein. *Gene* 2001-01-24 [PMID: 11223249]

Nairismagi ML, Vislovukh A, Meng Q et al. Translational control of TWIST1 expression in MCF-10A cell lines recapitulating breast cancer progression. *Oncogene*. 2012-11-22 [PMID: 22266852] (WB, Human)





### **Novus Biologicals USA**

10730 E. Briarwood Avenue  
Centennial, CO 80112  
USA  
Phone: 303.730.1950  
Toll Free: 1.888.506.6887  
Fax: 303.730.1966  
nb-customerservice@bio-techne.com

### **Bio-Techne Canada**

21 Canmotor Ave  
Toronto, ON M8Z 4E6  
Canada  
Phone: 905.827.6400  
Toll Free: 855.668.8722  
Fax: 905.827.6402  
canada.inquires@bio-techne.com

### **Bio-Techne Ltd**

19 Barton Lane  
Abingdon Science Park  
Abingdon, OX14 3NB, United Kingdom  
Phone: (44) (0) 1235 529449  
Free Phone: 0800 37 34 15  
Fax: (44) (0) 1235 533420  
info.EMEA@bio-techne.com

### **General Contact Information**

www.novusbio.com  
Technical Support: nb-technical@bio-techne.com  
Orders: nb-customerservice@bio-techne.com  
General: novus@novusbio.com

### **Products Related to NB100-1437**

---

NB820-59177	Human Brain Whole Tissue Lysate (Adult Whole Normal)
NBP2-33376H	Blue Marker Antibody (6F4-F6) [HRP]
HAF017	Rabbit anti-Goat IgG Secondary Antibody [HRP (Horseradish Peroxidase)]
HAF109	Donkey anti-Goat IgG Secondary Antibody [HRP (Horseradish Peroxidase)]
NB410-28088-1mg	Goat IgG Isotype Control

---

### **Limitations**

This product is for research use only and is not approved for use in humans or in clinical diagnosis. Primary Antibodies are guaranteed for 1 year from date of receipt.

For more information on our 100% guarantee, please visit [www.novusbio.com/guarantee](http://www.novusbio.com/guarantee)

Earn gift cards/discounts by submitting a review: [www.novusbio.com/reviews/submit/NB100-1437](http://www.novusbio.com/reviews/submit/NB100-1437)

Earn gift cards/discounts by submitting a publication using this product:  
[www.novusbio.com/publications](http://www.novusbio.com/publications)



