

Product Datasheet

Importin alpha 2/KPNA2 Antibody NB100-1371

Unit Size: 0.1 mg

Store at -20C. Avoid freeze-thaw cycles.

www.novusbio.com



technical@novusbio.com

Publications: 2

Protocols, Publications, Related Products, Reviews, Research Tools and Images at:
www.novusbio.com/NB100-1371

Updated 9/9/2025 v.20.1

Earn rewards for product
reviews and publications.

Submit a publication at www.novusbio.com/publications

Submit a review at www.novusbio.com/reviews/destination/NB100-1371



NB100-1371

Importin alpha 2/KPNA2 Antibody

Product Information	
Unit Size	0.1 mg
Concentration	0.5 mg/ml
Storage	Store at -20C. Avoid freeze-thaw cycles.
Clonality	Polyclonal
Preservative	0.02% Sodium Azide
Isotype	IgG
Purity	Immunogen affinity purified
Buffer	Tris saline (20 mM Tris pH 7.3, 150 mM NaCl), 0.5% BSA

Product Description	
Description	Novus Biologicals Goat Importin alpha 2/KPNA2 Antibody (NB100-1371) is a polyclonal antibody validated for use in IHC, WB and ELISA. Anti-Importin alpha 2/KPNA2 Antibody: Cited in 2 publications. All Novus Biologicals antibodies are covered by our 100% guarantee.
Host	Goat
Gene ID	3838
Gene Symbol	KPNA2
Species	Human
Reactivity Notes	Expected from sequence similarity: Mouse, Rat, Canine
Immunogen	Peptide with sequence C-QVQDGAPGTFNF corresponding to C-Terminus according to NP_002257.1.

Product Application Details	
Applications	Western Blot, Immunohistochemistry-Paraffin, Immunohistochemistry, Peptide ELISA
Recommended Dilutions	Western Blot 0.03 - 0.1 ug/mL, Immunohistochemistry, Immunohistochemistry-Paraffin 5 ug/mL, Peptide ELISA Detection limit 1:32000
Application Notes	WB: Approx 55 kDa band observed in lysates of cell line HeLa (calculated MW of 57.9 kDa according to NP_002257.1).



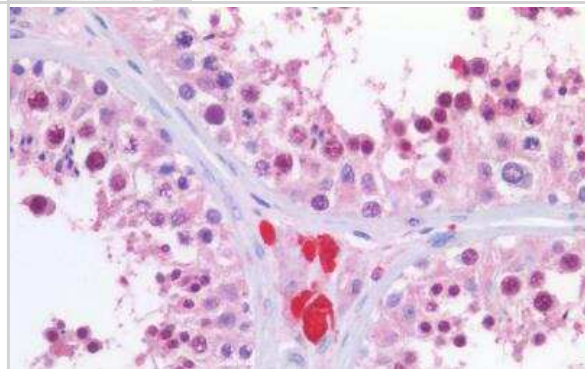
Images

Western Blot: Importin alpha 2/KPNA2 Antibody [NB100-1371] - Staining of Hela lysate (RIPA buffer, 35 ug total protein per lane). Antibody at 0.03 ug/mL. Detected by chemiluminescence.



250kDa
150kDa
100kDa
75kDa
50kDa
37kDa
25kDa
20kDa
15kDa
10kDa

Immunohistochemistry-Paraffin: Importin alpha 2/KPNA2 Antibody [NB100-1371] - Staining of paraffin embedded Human Testis. Antibody at 5 ug/mL. Steamed antigen retrieval with citrate buffer pH 6, AP-staining.



Publications

Park Jh, Ryu Sj, Kim Bj Et Al. Disruption of nucleocytoplasmic trafficking as a cellular senescence driver *Experimental & molecular medicine* 2021-06-01 [PMID: 34188179]

Cuomo CA, Kirch SA, Gyuris J et al. Rch1, a protein that specifically interacts with the RAG-1 recombination-activating protein. *Proc Natl Acad Sci U S A* 1994-06-21 [PMID: 8016130]



Novus Biologicals USA

10730 E. Briarwood Avenue
Centennial, CO 80112
USA
Phone: 303.730.1950
Toll Free: 1.888.506.6887
Fax: 303.730.1966
nb-customerservice@bio-techne.com

Bio-Techne Canada

21 Canmotor Ave
Toronto, ON M8Z 4E6
Canada
Phone: 905.827.6400
Toll Free: 855.668.8722
Fax: 905.827.6402
canada.inquires@bio-techne.com

Bio-Techne Ltd

19 Barton Lane
Abingdon Science Park
Abingdon, OX14 3NB, United Kingdom
Phone: (44) (0) 1235 529449
Free Phone: 0800 37 34 15
Fax: (44) (0) 1235 533420
info.EMEA@bio-techne.com

General Contact Information

www.novusbio.com
Technical Support: nb-technical@bio-techne.com
Orders: nb-customerservice@bio-techne.com
General: novus@novusbio.com

Products Related to NB100-1371

NB800-PC1	HeLa Whole Cell Lysate
NBP2-33376H	Blue Marker Antibody (6F4-F6) [HRP]
HAF017	Rabbit anti-Goat IgG Secondary Antibody [HRP (Horseradish Peroxidase)]
HAF109	Donkey anti-Goat IgG Secondary Antibody [HRP (Horseradish Peroxidase)]
NB410-28088-1mg	Goat IgG Isotype Control

Limitations

This product is for research use only and is not approved for use in humans or in clinical diagnosis. Primary Antibodies are guaranteed for 1 year from date of receipt.

For more information on our 100% guarantee, please visit www.novusbio.com/guarantee

Earn gift cards/discounts by submitting a review: www.novusbio.com/reviews/submit/NB100-1371

Earn gift cards/discounts by submitting a publication using this product:
www.novusbio.com/publications



