

Product Datasheet

Renin R Antibody NB100-1318

Unit Size: 0.1 mg

Store at -20C. Avoid freeze-thaw cycles.

www.novusbio.com



technical@novusbio.com

Publications: 9

Protocols, Publications, Related Products, Reviews, Research Tools and Images at:
www.novusbio.com/NB100-1318

Updated 9/9/2025 v.20.1

**Earn rewards for product
reviews and publications.**

Submit a publication at www.novusbio.com/publications

Submit a review at www.novusbio.com/reviews/destination/NB100-1318



NB100-1318

Renin R Antibody

Product Information	
Unit Size	0.1 mg
Concentration	0.5 mg/ml
Storage	Store at -20C. Avoid freeze-thaw cycles.
Clonality	Polyclonal
Preservative	0.02% Sodium Azide
Isotype	IgG
Purity	Immunogen affinity purified
Buffer	Tris saline (20 mM Tris pH 7.3, 150 mM NaCl), 0.5% BSA
Target Molecular Weight	39 kDa

Product Description	
Description	Novus Biologicals Goat Renin R Antibody (NB100-1318) is a polyclonal antibody validated for use in IHC, WB, ELISA, Flow and ICC/IF. Anti-Renin R Antibody: Cited in 9 publications. All Novus Biologicals antibodies are covered by our 100% guarantee.
Host	Goat
Gene ID	10159
Gene Symbol	ATP6AP2
Species	Human, Rat
Reactivity Notes	Rat reactivity reported in scientific literature (PMID: 22911790).
Immunogen	Peptide with sequence C-SIIYRMTNQKIRMD corresponding to C-Terminus according to NP_005756.2.

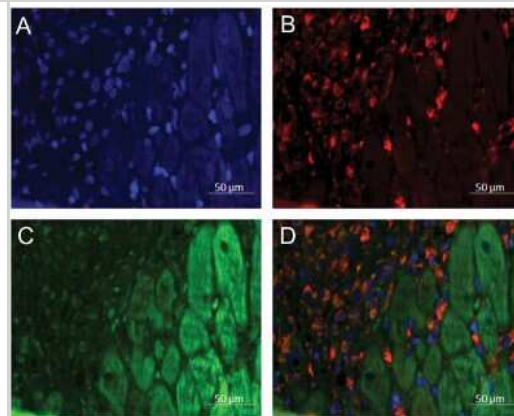
Product Application Details	
Applications	Western Blot, Immunohistochemistry-Paraffin, Flow Cytometry, Immunocytochemistry/ Immunofluorescence, Immunohistochemistry, Peptide ELISA
Recommended Dilutions	Western Blot 0.3 - 1.0 ug/ml, Flow Cytometry 10 ug/ml, Immunohistochemistry, Immunocytochemistry/ Immunofluorescence, Immunohistochemistry-Paraffin, Peptide ELISA Detection limit 1:8000
Application Notes	Western blot: Approx 38-39kDa band observed in Human Cerebellum and in Human and Rat Heart lysates (calculated MW of 39.0kDa according to Human NP_005756.2 and Rat NP_001007092.1). Primary incubation 1 hour at room temperature. Use in ICC/IF reported in scientific literature (PMID: 34228176).

Images

Western Blot: Renin R Antibody [NB100-1318] - (0.5ug/ml) staining of Rat Heart lysate (35ug protein in RIPA buffer). Detected by chemiluminescence.

250kDa
150kDa
100kDa
75kDa
50kDa
37kDa
25kDa
20kDa
15kDa

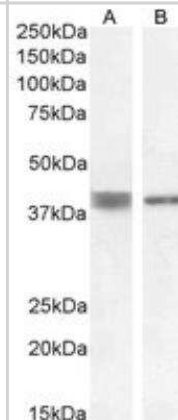
Immunohistochemistry: Renin R Antibody [NB100-1318] - Immunofluorescence staining of LV anterior wall at day 3 after gene transfer showing Renin R predominantly in cardiomyocytes. A) DAPI (blue), B) prolyl 4-hydroxylase staining for fibroblasts (red), C) Renin R (green) and D, Merge. Representative image is shown. Image collected and cropped by CiteAb from the following publication (<https://pubmed.ncbi.nlm.nih.gov/22911790/>) licensed under a CC-BY license.



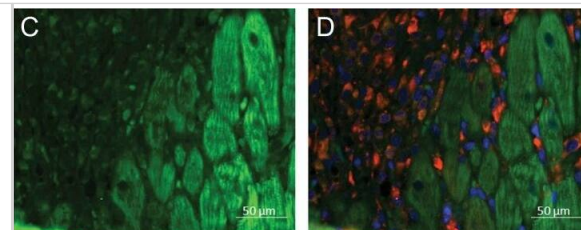
Flow Cytometry: Renin R Antibody [NB100-1318] - Flow cytometric analysis of paraformaldehyde fixed HeLa cells (blue line), permeabilized with 0.5% Triton. Primary incubation 1hr (10ug/ml) followed by Alexa Fluor 488 secondary antibody (2ug/ml). IgG control: Unimmunized goat IgG (black line) followed by Alexa Fluor 488 secondary antibody.



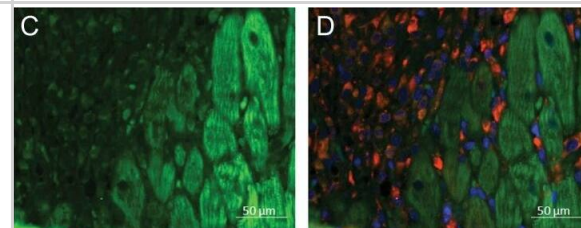
Western Blot: Renin R Antibody [NB100-1318] - (0.5ug/ml) staining of Human Cerebellum (A) and Heart (B) lysate (35ug protein in RIPA buffer). Detected by chemiluminescence.



(P)RR is located into the cardiac myocytes in the rat heart. Immunofluorescence staining of LV anterior wall at day 3 after gene transfer showing (P)RR predominantly in cardiomyocytes. A, DAPI (blue), B, prolyl 4-hydroxylase β staining for fibroblasts (red), C, (P)RR (green) and D, Merge. Representative image is shown.



Immunocytochemistry/ Immunofluorescence: Renin R Antibody [NB100-1318] - (P)RR is located into the cardiac myocytes in the rat heart. Immunofluorescence staining of LV anterior wall at day 3 after gene transfer showing (P)RR predominantly in cardiomyocytes. A, DAPI (blue), B, prolyl 4-hydroxylase β staining for fibroblasts (red), C, (P)RR (green) & D, Merge. Representative image is shown. Image collected & cropped by CiteAb from the following publication (<https://pubmed.ncbi.nlm.nih.gov/22911790>), licensed under a CC-BY license. Not internally tested by Novus Biologicals.



Publications

Figueiredo M, Daryadel A, Sihn G Et Al. The (pro)renin receptor (ATP6ap2) facilitates receptor-mediated endocytosis and lysosomal function in the renal proximal tubule Pflugers Archiv : European journal of physiology 2021-08-01 [PMID: 34228176] (ICC/IF)

Daryadel A, Bourgeois S, Figueiredo MF et al. Colocalization of the (Pro)renin Receptor/Atp6ap2 with H⁺-ATPases in Mouse Kidney but Prorenin Does Not Acutely Regulate Intercalated Cell H⁺-ATPase Activity. PLoS One 2016-01-29 [PMID: 26824839] (WB)

Ludwig J, Kerscher S, Brandt U et al. Identification and characterization of a novel 9.2-kDa membrane sector-associated protein of vacuolar proton-ATPase from chromaffin granules. J Biol Chem 1998-05-01 [PMID: 9556572]

Mahmud H, Candido WM, van Genne L et al. Cardiac function and architecture are maintained in a model of cardiorestricted overexpression of the prorenin-Renin receptor. PLoS ONE 2014-03-03 [PMID: 24587131] (WB, Mouse)

Mahmud H, Sillje HH, Cannon MV et al. Regulation of the (pro)renin-renin receptor in cardiac remodelling. J Cell Mol Med. 2012-04-01 [PMID: 21722305]

Pringle KG, Zakar T, Yates D et al. Molecular evidence of a (pro)renin/ (pro)renin receptor system in human intrauterine tissues in pregnancy and its association with PGHS-2. J Renin Angiotensin Aldosterone Syst 2010-08-11 [PMID: 20702505] (IHC-P, Human)

Moilanen AM, Rysa J, Serpi R et al. (Pro)renin Receptor Triggers Distinct Angiotensin II-Independent Extracellular Matrix Remodeling and Deterioration of Cardiac Function plos ONE 2012-01-01 [PMID: 22911790] (IF/IHC, Rat)

Shan Z, Cuadra AE, Sumners C, Raizada MK. Characterization of a functional (pro)renin receptor in rat brain neurons. Exp Physiol;93(5):701-8. 2008-05-01 [PMID: 18326551]

Valenzuela R, Barroso-Chinea P, Villar-Cheda B et al. Location of Prorenin Receptors in Primate Substantia Nigra: Effects on Dopaminergic Cell Death. J Neuropathol Exp Neurol. 2010-10-11 [PMID: 20940627]



Novus Biologicals USA

10730 E. Briarwood Avenue
Centennial, CO 80112
USA
Phone: 303.730.1950
Toll Free: 1.888.506.6887
Fax: 303.730.1966
nb-customerservice@bio-techne.com

Bio-Techne Canada

21 Canmotor Ave
Toronto, ON M8Z 4E6
Canada
Phone: 905.827.6400
Toll Free: 855.668.8722
Fax: 905.827.6402
canada.inquires@bio-techne.com

Bio-Techne Ltd

19 Barton Lane
Abingdon Science Park
Abingdon, OX14 3NB, United Kingdom
Phone: (44) (0) 1235 529449
Free Phone: 0800 37 34 15
Fax: (44) (0) 1235 533420
info.EMEA@bio-techne.com

General Contact Information

www.novusbio.com
Technical Support: nb-technical@bio-techne.com
Orders: nb-customerservice@bio-techne.com
General: novus@novusbio.com

Products Related to NB100-1318

NB820-59231	Human Kidney Whole Tissue Lysate (Adult Whole Normal)
NBP2-33376H	Blue Marker Antibody (6F4-F6) [HRP]
HAF017	Rabbit anti-Goat IgG Secondary Antibody [HRP (Horseradish Peroxidase)]
HAF109	Donkey anti-Goat IgG Secondary Antibody [HRP (Horseradish Peroxidase)]
NB410-28088-1mg	Goat IgG Isotype Control

Limitations

This product is for research use only and is not approved for use in humans or in clinical diagnosis. Primary Antibodies are guaranteed for 1 year from date of receipt.

For more information on our 100% guarantee, please visit www.novusbio.com/guarantee

Earn gift cards/discounts by submitting a review: www.novusbio.com/reviews/submit/NB100-1318

Earn gift cards/discounts by submitting a publication using this product:
www.novusbio.com/publications



