

Product Datasheet

FBXW2 Antibody NB100-1300

Unit Size: 0.1 mg

Store at -20C. Avoid freeze-thaw cycles.

www.novusbio.com



technical@novusbio.com

Publications: 1

Protocols, Publications, Related Products, Reviews, Research Tools and Images at:
www.novusbio.com/NB100-1300

Updated 9/9/2025 v.20.1

Earn rewards for product
reviews and publications.

Submit a publication at www.novusbio.com/publications

Submit a review at www.novusbio.com/reviews/destination/NB100-1300



NB100-1300

FBXW2 Antibody

Product Information	
Unit Size	0.1 mg
Concentration	0.5 mg/ml
Storage	Store at -20C. Avoid freeze-thaw cycles.
Clonality	Polyclonal
Preservative	0.02% Sodium Azide
Isotype	IgG
Purity	Immunogen affinity purified
Buffer	Tris saline (20 mM Tris pH 7.3, 150 mM NaCl), 0.5% BSA

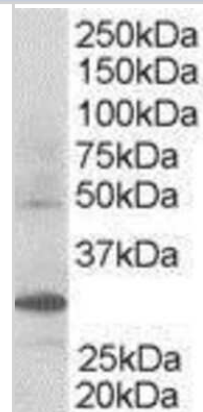
Product Description	
Description	Novus Biologicals Goat FBXW2 Antibody (NB100-1300) is a polyclonal antibody validated for use in IHC, WB and ELISA. Anti-FBXW2 Antibody: Cited in 1 publication. All Novus Biologicals antibodies are covered by our 100% guarantee.
Host	Goat
Gene ID	26190
Gene Symbol	FBXW2
Species	Human, Mouse, Rat
Immunogen	Peptide with sequence C-KRGSSFLAGEHPG corresponding to C-Terminus according to NP_036296.2.

Product Application Details	
Applications	Western Blot, Immunohistochemistry-Paraffin, Immunohistochemistry, Peptide ELISA
Recommended Dilutions	Western Blot 0.3 - 1.5 ug/ml, Immunohistochemistry 2 - 3 ug/ml, Immunohistochemistry-Paraffin 2 - 3 ug/ml, Peptide ELISA Detection limit 1:128000
Application Notes	WB: Approx. 48 kDa band observed in human kidney lysates (calculated MW of 48.0 kDa band according to NP_036296.1). A stronger band of unknown identity was also consistently observed at approx. 30 kDa band - both bands were successfully blocked by incubation with the immunizing peptide. IHC-P: Human kidney show cytoplasmic staining of epithelial cells in some renal tubules. Anonymous customers have reported positive results in on mouse and rat kidney tissue.

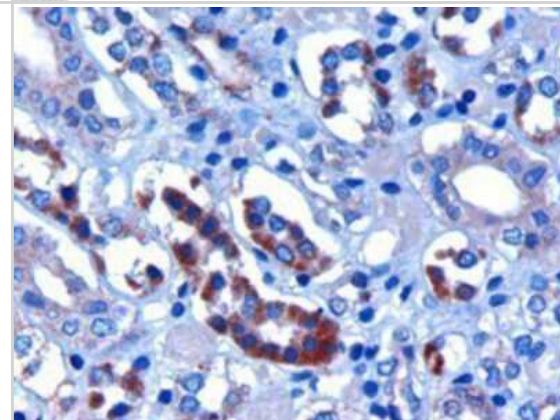


Images

Western Blot: FBXW2 Antibody [NB100-1300] - (0.3ug/ml) of Human Kidney lysate (RIPA buffer, 30ug total protein per lane). Primary incubated for 1 hour. Detected by western blot using chemiluminescence.



Immunohistochemistry: FBXW2 Antibody [NB100-1300] - (3ug/ml) staining of paraffin embedded Human Kidney. Microwaved antigen retrieval with citrate buffer pH 6, HRP-staining.



Publications

Winston JT, Koepp DM, Zhu C et al. A family of mammalian F-box proteins. *Curr Biol* 1999-10-21 [PMID: 10531037]



Novus Biologicals USA

10730 E. Briarwood Avenue
Centennial, CO 80112
USA
Phone: 303.730.1950
Toll Free: 1.888.506.6887
Fax: 303.730.1966
nb-customerservice@bio-techne.com

Bio-Techne Canada

21 Canmotor Ave
Toronto, ON M8Z 4E6
Canada
Phone: 905.827.6400
Toll Free: 855.668.8722
Fax: 905.827.6402
canada.inquires@bio-techne.com

Bio-Techne Ltd

19 Barton Lane
Abingdon Science Park
Abingdon, OX14 3NB, United Kingdom
Phone: (44) (0) 1235 529449
Free Phone: 0800 37 34 15
Fax: (44) (0) 1235 533420
info.EMEA@bio-techne.com

General Contact Information

www.novusbio.com
Technical Support: nb-technical@bio-techne.com
Orders: nb-customerservice@bio-techne.com
General: novus@novusbio.com

Products Related to NB100-1300

NBL1-10646	FBXW2 Overexpression Lysate
NBP2-33376H	Blue Marker Antibody (6F4-F6) [HRP]
HAF017	Rabbit anti-Goat IgG Secondary Antibody [HRP (Horseradish Peroxidase)]
HAF109	Donkey anti-Goat IgG Secondary Antibody [HRP (Horseradish Peroxidase)]
NB410-28088-1mg	Goat IgG Isotype Control

Limitations

This product is for research use only and is not approved for use in humans or in clinical diagnosis. Primary Antibodies are guaranteed for 1 year from date of receipt.

For more information on our 100% guarantee, please visit www.novusbio.com/guarantee

Earn gift cards/discounts by submitting a review: www.novusbio.com/reviews/submit/NB100-1300

Earn gift cards/discounts by submitting a publication using this product:
www.novusbio.com/publications



