

Product Datasheet

CLPP Antibody NB100-1189

Unit Size: 0.1 mg

Store at -20C. Avoid freeze-thaw cycles.

www.novusbio.com



technical@novusbio.com

Publications: 5

Protocols, Publications, Related Products, Reviews, Research Tools and Images at:
www.novusbio.com/NB100-1189

Updated 9/9/2025 v.20.1

Earn rewards for product
reviews and publications.

Submit a publication at www.novusbio.com/publications

Submit a review at www.novusbio.com/reviews/destination/NB100-1189



NB100-1189

CLPP Antibody

Product Information	
Unit Size	0.1 mg
Concentration	0.5 mg/ml
Storage	Store at -20C. Avoid freeze-thaw cycles.
Clonality	Polyclonal
Preservative	0.02% Sodium Azide
Isotype	IgG
Purity	Immunogen affinity purified
Buffer	Tris saline (20 mM Tris pH 7.3, 150 mM NaCl), 0.5% BSA

Product Description	
Description	Novus Biologicals Goat CLPP Antibody (NB100-1189) is a polyclonal antibody validated for use in IHC, WB and ELISA. Anti-CLPP Antibody: Cited in 4 publications. All Novus Biologicals antibodies are covered by our 100% guarantee.
Host	Goat
Gene ID	8192
Gene Symbol	CLPP
Species	Human
Immunogen	Peptide with sequence C-EAAPAAEPVPAST corresponding to C-Terminus according to NP_006003.1.

Product Application Details	
Applications	Western Blot, Immunohistochemistry-Paraffin, Immunohistochemistry, Peptide ELISA
Recommended Dilutions	Western Blot 1 - 3 ug/ml, Immunohistochemistry 2 - 4 ug/ml, Immunohistochemistry-Paraffin 2 - 4 ug/ml, Peptide ELISA Detection limit 1:1000
Application Notes	WB: Approx. 26 kDa band observed in human heart (calculated MW of 30.2 kDa band according to NP_006003.1). IHC-P: Human liver shows cytoplasmic staining consistent with mitochondria in hepatocytes.

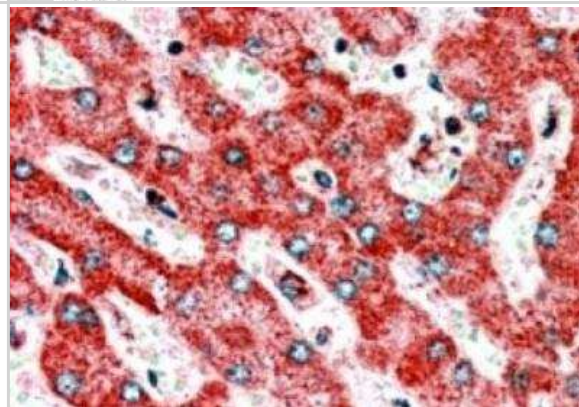


Images

Western Blot: CLPP Antibody [NB100-1189] - Analysis in Human Heart lysate (35 ug protein in RIPA buffer). Primary incubation was 1 hour. Detected by chemiluminescence

250kDa
150kDa
100kDa
75kDa
50kDa
37kDa
25kDa
20kDa
15kDa

Immunohistochemistry-Paraffin: CLPP Antibody [NB100-1189] - IHC staining of CLPP in paraffin embedded Human Liver using this antibody at 2.5 ug/ml. Steamed antigen retrieval with citrate buffer pH 6, AP-staining.



Western Blot: CLPP Antibody [NB100-1189] - Analysis of CLPP in human muscle lysate (RIPA buffer, 35 ug total protein per lane) using this antibody at 1 ug/ml. Primary antibody incubated for 1 hour. Detected using chemiluminescence.

250kDa
150kDa
100kDa
75kDa
50kDa
37kDa
25kDa
20kDa

Publications

Lee A, Woodward M, Rymer C et al. Prevalence and Characterisation of Antimicrobial Resistance, Virulence Factors and Multilocus Sequence Typing (MLST) of *Escherichia coli* Isolated from Broiler Caeca Animals : an Open Access Journal from MDPI 2025-05-08 [PMID: 40427233]

Telionis A, Lahmers K, Todd M et al. Distribution of *Theileria orientalis* in Virginia Market Cattle, 2018–2020 *Pathogens* 2022-11-15 [PMID: 36422604]

Hainley LE, Hughson MS, Narendran A et al. Chk1 and the Host Cell DNA Damage Response as a Potential Antiviral Target in BK Polyomavirus Infection *Viruses* 2021-07-13 [PMID: 34372559]

Sluyter JD, Camargo CA, Waayer D et al. Effect of Monthly, High-Dose, Long-Term Vitamin D on Lung Function: A Randomized Controlled Trial *Nutrients* 2017-12-13 [PMID: 29236049]

Bross P, Andresen BS, Knudsen I et al. Human ClpP protease: cDNA sequence, tissue-specific expression and chromosomal assignment of the gene. *FEBS Lett* 1995-12-18 [PMID: 8543061]



Novus Biologicals USA

10730 E. Briarwood Avenue
Centennial, CO 80112
USA
Phone: 303.730.1950
Toll Free: 1.888.506.6887
Fax: 303.730.1966
nb-customerservice@bio-techne.com

Bio-Techne Canada

21 Canmotor Ave
Toronto, ON M8Z 4E6
Canada
Phone: 905.827.6400
Toll Free: 855.668.8722
Fax: 905.827.6402
canada.inquires@bio-techne.com

Bio-Techne Ltd

19 Barton Lane
Abingdon Science Park
Abingdon, OX14 3NB, United Kingdom
Phone: (44) (0) 1235 529449
Free Phone: 0800 37 34 15
Fax: (44) (0) 1235 533420
info.EMEA@bio-techne.com

General Contact Information

www.novusbio.com
Technical Support: nb-technical@bio-techne.com
Orders: nb-customerservice@bio-techne.com
General: novus@novusbio.com

Products Related to NB100-1189

NB820-59217	Human Heart Whole Tissue Lysate (Adult Whole Normal)
NBP2-33376H	Blue Marker Antibody (6F4-F6) [HRP]
HAF017	Rabbit anti-Goat IgG Secondary Antibody [HRP (Horseradish Peroxidase)]
HAF109	Donkey anti-Goat IgG Secondary Antibody [HRP (Horseradish Peroxidase)]
NB410-28088-1mg	Goat IgG Isotype Control

Limitations

This product is for research use only and is not approved for use in humans or in clinical diagnosis. Primary Antibodies are guaranteed for 1 year from date of receipt.

For more information on our 100% guarantee, please visit www.novusbio.com/guarantee

Earn gift cards/discounts by submitting a review: www.novusbio.com/reviews/submit/NB100-1189

Earn gift cards/discounts by submitting a publication using this product:
www.novusbio.com/publications



