

Product Datasheet

KAP1 Antibody NB100-1161

Unit Size: 0.1 mg

Store at -20C. Avoid freeze-thaw cycles.

www.novusbio.com



technical@novusbio.com

Publications: 3

Protocols, Publications, Related Products, Reviews, Research Tools and Images at:
www.novusbio.com/NB100-1161

Updated 9/9/2025 v.20.1

Earn rewards for product
reviews and publications.

Submit a publication at www.novusbio.com/publications

Submit a review at www.novusbio.com/reviews/destination/NB100-1161



NB100-1161**KAP1 Antibody**

Product Information	
Unit Size	0.1 mg
Concentration	0.5 mg/ml
Storage	Store at -20C. Avoid freeze-thaw cycles.
Clonality	Polyclonal
Preservative	0.02% Sodium Azide
Isotype	IgG
Purity	Immunogen affinity purified
Buffer	Tris saline (20 mM Tris pH 7.3, 150 mM NaCl), 0.5% BSA

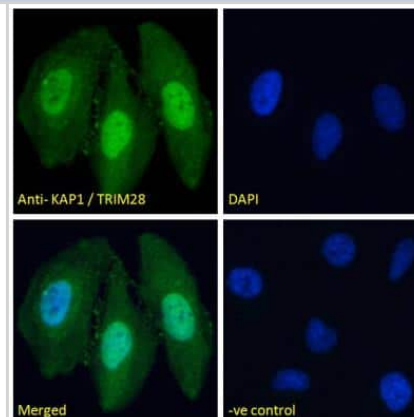
Product Description	
Description	Novus Biologicals Goat KAP1 Antibody (NB100-1161) is a polyclonal antibody validated for use in IHC, WB, ELISA, Flow, ICC/IF and ChIP. Anti-KAP1 Antibody: Cited in 3 publications. All Novus Biologicals antibodies are covered by our 100% guarantee.
Host	Goat
Gene ID	10155
Gene Symbol	TRIM28
Species	Human
Immunogen	Peptide with sequence C-SSQELSGGPGDGP corresponding to C-Terminus according to NP_005753.1.

Product Application Details	
Applications	Western Blot, Immunohistochemistry-Paraffin, Flow Cytometry, Immunocytochemistry/ Immunofluorescence, Immunohistochemistry, Peptide ELISA, Chromatin Immunoprecipitation (ChIP)
Recommended Dilutions	Western Blot, Flow Cytometry 10 ug/ml, Immunohistochemistry 2-4 ug/ml, Immunocytochemistry/ Immunofluorescence 10 ug/ml, Immunohistochemistry-Paraffin 2-4 ug/ml, Peptide ELISA Detection limit 1:2000, Chromatin Immunoprecipitation (ChIP)
Application Notes	<p>Immunofluorescence: Successful usage on mouse embryo at the late zygote stage, 5ug/ml. Strong expression of the protein seen in the nucleus of HeLa and U2OS cells.</p> <p>ChIP successful usage for K562 cells is reported in scientific literature (PMID: 21170338). WB: Approx. 120 kDa band observed in HepG2 lysates (calculated MW of 88.5 kDa band according to NP_005753.1). The higher observed MW is explained by sumoylated protein.</p> <p>IHC-P: Human breast shows nuclear staining in epithelial duct cells. IHC successful usage on human gastric cancer surgical specimens is reported in scientific literature (PMID: 19898899).</p> <p>Flow Cytometry: Flow cytometric analysis of HeLa cells.</p>

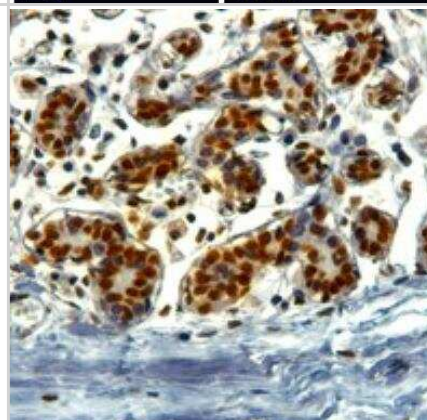


Images

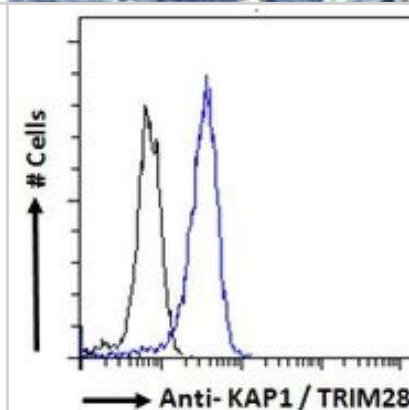
Immunocytochemistry/Immunofluorescence: KAP1 Antibody [NB100-1161] - analysis of paraformaldehyde fixed HeLa cells, permeabilized with 0.15% Triton. Primary incubation 1hr (10ug/ml) followed by Alexa Fluor 488 secondary antibody (2ug/ml), showing nuclear staining. The nuclear stain is DAPI (blue). Negative control: Unimmunized goat IgG (10ug/ml) followed by Alexa Fluor 488 secondary antibody (2ug/ml).



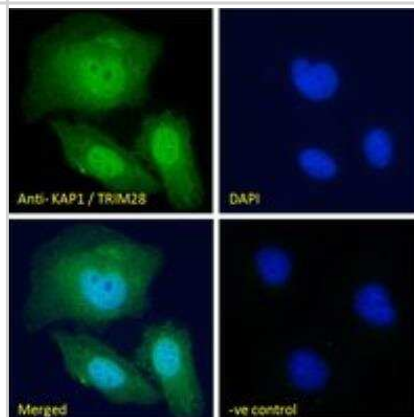
Immunohistochemistry-Paraffin: KAP1 Antibody [NB100-1161] - (2ug/ml) staining of paraffin embedded Human Breast. Steamed antigen retrieval with Tris/EDTA buffer pH 9, HRP-staining.



Flow Cytometry: KAP1 Antibody [NB100-1161] - analysis of paraformaldehyde fixed HeLa cells (blue line), permeabilized with 0.5% Triton. Primary incubation 1hr (10ug/ml) followed by Alexa Fluor 488 secondary antibody (2ug/ml). IgG control: Unimmunized goat IgG (black line) followed by Alexa Fluor 488 secondary antibody.



Immunocytochemistry/Immunofluorescence: KAP1 Antibody [NB100-1161] - analysis of paraformaldehyde fixed U2OS cells, permeabilized with 0.15% Triton. Primary incubation 1hr (10ug/ml) followed by Alexa Fluor 488 secondary antibody (2ug/ml), showing nuclear staining. The nuclear stain is DAPI (blue). Negative control: Unimmunized goat IgG (10ug/ml) followed by Alexa Fluor 488 secondary antibody (2ug/ml).



Publications

Friedman JR, Fredericks WJ, Jensen DE et al. KAP-1, a novel corepressor for the highly conserved KRAB repression domain. *Genes Dev* 1996-08-15 [PMID: 8769649]

Frietze S, O'Geen H, Blahnik KR et al. ZNF274 recruits the histone methyltransferase SETDB1 to the 3' ends of ZNF genes. *PLoS One* 2010-12-08 [PMID: 21170338]

Yokoe T, Toiyama Y, Okugawa Y et al. KAP1 Is Associated With Peritoneal Carcinomatosis in Gastric Cancer *Ann Surg Oncol* 2009-11-07 [PMID: 19898899]





Novus Biologicals USA

10730 E. Briarwood Avenue
Centennial, CO 80112
USA
Phone: 303.730.1950
Toll Free: 1.888.506.6887
Fax: 303.730.1966
nb-customerservice@bio-techne.com

Bio-Techne Canada

21 Canmotor Ave
Toronto, ON M8Z 4E6
Canada
Phone: 905.827.6400
Toll Free: 855.668.8722
Fax: 905.827.6402
canada.inquires@bio-techne.com

Bio-Techne Ltd

19 Barton Lane
Abingdon Science Park
Abingdon, OX14 3NB, United Kingdom
Phone: (44) (0) 1235 529449
Free Phone: 0800 37 34 15
Fax: (44) (0) 1235 533420
info.EMEA@bio-techne.com

General Contact Information

www.novusbio.com
Technical Support: nb-technical@bio-techne.com
Orders: nb-customerservice@bio-techne.com
General: novus@novusbio.com

Products Related to NB100-1161

HAF017	Rabbit anti-Goat IgG Secondary Antibody [HRP (Horseradish Peroxidase)]
HAF109	Donkey anti-Goat IgG Secondary Antibody [HRP (Horseradish Peroxidase)]
NB410-28088-1mg	Goat IgG Isotype Control
NBP2-22889	Recombinant Human KAP1 His Protein

Limitations

This product is for research use only and is not approved for use in humans or in clinical diagnosis. Primary Antibodies are guaranteed for 1 year from date of receipt.

For more information on our 100% guarantee, please visit www.novusbio.com/guarantee

Earn gift cards/discounts by submitting a review: www.novusbio.com/reviews/submit/NB100-1161

Earn gift cards/discounts by submitting a publication using this product:
www.novusbio.com/publications



