

Product Datasheet

ATM Antibody [PE] NB100-104PE

Unit Size: 0.05 ml

Store at 4C in the dark.

www.novusbio.com



technical@novusbio.com

Protocols, Publications, Related Products, Reviews, Research Tools and Images at:
www.novusbio.com/NB100-104PE

Updated 11/11/2025 v.20.1

Earn rewards for product
reviews and publications.

Submit a publication at www.novusbio.com/publications

Submit a review at www.novusbio.com/reviews/destination/NB100-104PE



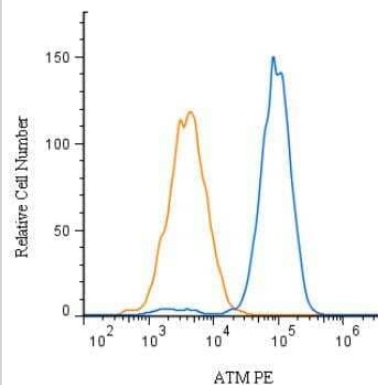
NB100-104PE

ATM Antibody [PE]

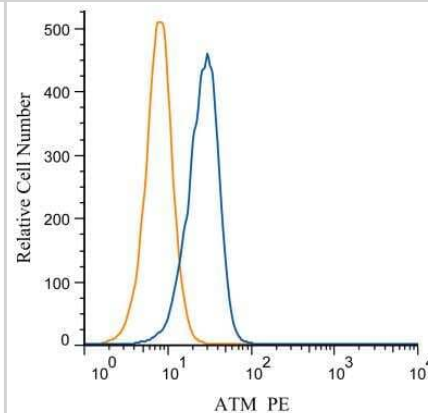
Product Information	
Unit Size	0.05 ml
Concentration	Please see the vial label for concentration. If unlisted please contact technical services.
Storage	Store at 4C in the dark.
Clonality	Polyclonal
Preservative	0.05% Sodium Azide
Isotype	IgG
Conjugate	PE
Purity	Immunogen affinity purified
Buffer	PBS
Target Molecular Weight	351 kDa
Product Description	
Host	Rabbit
Gene ID	472
Gene Symbol	ATM
Species	Human, Mouse, Rat, Canine, Kangaroo
Reactivity Notes	Canine reactivity reported in scientific literature (PMID: 31648115).
Immunogen	ATM Antibody was made to a fragment of the human ATM protein corresponding to the C-terminus (within the last third of the protein sequence). [Uniprot: Q13315]
Product Application Details	
Applications	Western Blot, Immunohistochemistry-Paraffin, ELISA, Flow Cytometry, Immunoblotting, Immunocytochemistry/ Immunofluorescence, Immunohistochemistry, Immunoprecipitation
Recommended Dilutions	Western Blot, Flow Cytometry, ELISA, Immunohistochemistry, Immunocytochemistry/ Immunofluorescence, Immunoprecipitation, Immunohistochemistry-Paraffin, Immunoblotting
Application Notes	Optimal dilution of this antibody should be experimentally determined.

Images

Flow Cytometry: ATM Antibody [PE] [NB100-104PE] - An intracellular stain was performed on HepG2 cells with ATM antibody NB100-104PE (blue) and a matched isotype control (orange). Cells were fixed with 4% PFA and then permeabilized with 0.1% saponin. Cells were incubated in an antibody dilution of 5 ug/mL for 30 minutes at room temperature. Both antibodies were conjugated to Phycoerythrin.



Flow Cytometry: ATM Antibody [PE] [NB100-104PE] - An intracellular stain was performed on HeLa cells with ATM antibody NB100-104PE (blue) and a matched isotype control NBP2-24893PE (orange). Cells were fixed with 4% PFA and then permeabilized with 0.1% saponin. Cells were incubated in an antibody dilution of 1 ug/mL for 30 minutes at room temperature. Both antibodies were conjugated to Phycoerythrin.





Novus Biologicals USA

10730 E. Briarwood Avenue
Centennial, CO 80112
USA
Phone: 303.730.1950
Toll Free: 1.888.506.6887
Fax: 303.730.1966
nb-customerservice@bio-techne.com

Bio-Techne Canada

21 Canmotor Ave
Toronto, ON M8Z 4E6
Canada
Phone: 905.827.6400
Toll Free: 855.668.8722
Fax: 905.827.6402
canada.inquires@bio-techne.com

Bio-Techne Ltd

19 Barton Lane
Abingdon Science Park
Abingdon, OX14 3NB, United Kingdom
Phone: (44) (0) 1235 529449
Free Phone: 0800 37 34 15
Fax: (44) (0) 1235 533420
info.EMEA@bio-techne.com

General Contact Information

www.novusbio.com
Technical Support: nb-technical@bio-techne.com
Orders: nb-customerservice@bio-techne.com
General: novus@novusbio.com

Products Related to NB100-104PE

NBP2-24983	Rabbit IgG Isotype Control [PE]
H00000472-Q01-10ug	Recombinant Human ATM GST (N-Term) Protein
DAN00	Angiogenin [HRP]
NBP2-69891	Human ATM ELISA Kit (Colorimetric)

Limitations

This product is for research use only and is not approved for use in humans or in clinical diagnosis. Primary Antibodies are guaranteed for 1 year from date of receipt.

For more information on our 100% guarantee, please visit www.novusbio.com/guarantee

Earn gift cards/discounts by submitting a review: www.novusbio.com/reviews/submit/NB100-104PE

Earn gift cards/discounts by submitting a publication using this product:
www.novusbio.com/publications

