

Product Datasheet

MolBoolean Mouse/Rabbit Assay Kit MoIB00001

Unit Size: 4.8 ml

Store at -20C.

www.novusbio.com



technical@novusbio.com

Protocols, Publications, Related Products, Reviews, Research Tools and Images at:
www.novusbio.com/MoIB00001

Updated 1/16/2025 v.20.1

Earn rewards for product
reviews and publications.

Submit a publication at www.novusbio.com/publications

Submit a review at www.novusbio.com/reviews/destination/MoIB00001



MolB00001**MolBoolean Mouse/Rabbit Assay Kit**

Product Information	
Unit Size	4.8 ml
Concentration	Concentration is not relevant for this product. Please see the protocols for proper use of this product.
Storage	Store at -20C.

Product Description	
Description	<p>MolBoolean™ Mouse/Rabbit Assay Kit Summary</p> <p>The MolBoolean™ Mouse/Rabbit Assay Kit (Catalog # MolB00001) is a state-of-the-art tool for analyzing protein proximity within cells and tissues using advanced immunofluorescent detection. Specifically designed to quantify the levels of proteins A, B, and their interactions (AB), this kit works with user-selected mouse and rabbit primary antibodies and includes all necessary reagents for approximately 120 assays, following the provided protocol.</p> <p>Key Features of the MolBoolean™ Mouse/Rabbit Assay Kit</p> <ul style="list-style-type: none"> • In Situ Protein Proximity Analysis: Allows detection of protein interactions directly within cells and tissues. • Simultaneous Detection: Accurately measures free and interacting fractions of proteins A and B, including their complex (AB). • Dual Fluorescent Reporters: Utilizes two immunofluorescent reporters with emission peaks at 590 nm and 664 nm for clear and distinct signals. • Versatile Primary Antibody Compatibility: Suitable for use with any mouse and rabbit primary antibodies chosen by the user. • Enhanced Signal Detection: Incorporates Rolling Circle Amplification (RCA) for amplified signal strength and clarity. • Standard Equipment Compatibility: Compatible with common immunofluorescent microscopy and equipment. <p>7-Step Assay Process</p> <ol style="list-style-type: none"> 1. Proximity Probe Binding: Probes bind to the primary antibodies. 2. Probe Arm Hybridization: Hybridization of probe arms to DNA circle oligos. 3. DNA Nicking: Introduction of nicks in the DNA for further processing. 4. Tag Oligo Incorporation: Incorporation of tagged oligonucleotides into the DNA.



5. DNA Ligation: Ligation of the DNA ends.
6. Rolling Circle Amplification: Amplification of the circular DNA to enhance signal.
7. Detection: Visualization and analysis of the results.

Kit Specifications

Total Volume: 4.8 ml

Assay Capacity: Sufficient for approximately 120 cell assays (40 µl/assay) and 60 tissue assays (80 µl/assay).

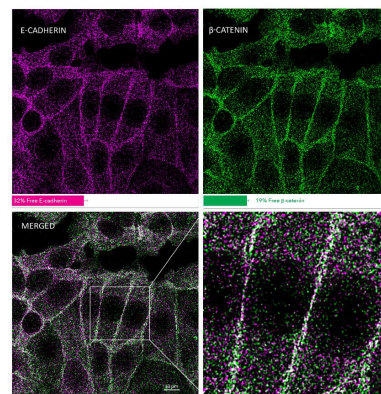
The MolBoolean™ Mouse/Rabbit Assay Kit is an all-in-one solution for detailed and reliable protein interaction studies, offering exceptional precision and ease of use with standard laboratory equipment.

Species	Mouse
Kit Components	Blocker (Tube 1), Diluent (Tube 2), Probe A (Tube 3), Probe B (Tube 4), Circle (Tube 5), Additive (Tube 6), Buffer A (Tube 7), Nickase enzyme (Tube 8), Buffer B (Tube 9), Tag oligos (Tube 10), Ligase enzyme (Tube 11), Polymerase enzyme (Tube 12), Buffer C (Tube 13), Detection oligos (Tube 14), Buffer D (Tube 15)
Notes	MolBoolean (TM) is a trademark of Atlas Antibodies AB. The product is for research use only and not approved for use in humans or in clinical diagnosis. Kits are guaranteed for 6 months from date of receipt.

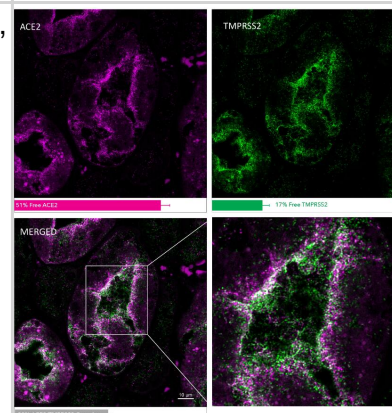
Product Application Details	
Applications	Proximity Ligation Assay
Recommended Dilutions	Proximity Ligation Assay
Application Notes	Primary antibodies are not supplied as part of the MolBoolean kit. The user should include their own antibodies, one of rabbit and one of mouse origin, which have been validated in relevant applications.

Images

MolBoolean analysis of the interaction between E-cadherin (cat. NBP2-34475, magenta) and B-catenin (cat. NBP1-89989, green) in MCF7 cells, showing the relative quantification of free versus interacting protein fractions, indicated by the detection of rolling circle products (RCPs) in either one or two fluorescent channels. Data is normalized to total target protein levels (total RCPs).



MolBoolean analysis of the interaction between ACE2 (cat. NBP2-59036, magenta) and TMPRSS2 (cat. NBP2-38263, green) in human kidney, showing the relative quantification of free versus interacting protein fractions, indicated by the detection of rolling circle products (RCPs) in either one or two fluorescent channels. Data is normalized to total target protein levels (total RCPs).





Novus Biologicals USA

10730 E. Briarwood Avenue
Centennial, CO 80112
USA
Phone: 303.730.1950
Toll Free: 1.888.506.6887
Fax: 303.730.1966
nb-customerservice@bio-techne.com

Bio-Techne Canada

21 Canmotor Ave
Toronto, ON M8Z 4E6
Canada
Phone: 905.827.6400
Toll Free: 855.668.8722
Fax: 905.827.6402
canada.inquires@bio-techne.com

Bio-Techne Ltd

19 Barton Lane
Abingdon Science Park
Abingdon, OX14 3NB, United Kingdom
Phone: (44) (0) 1235 529449
Free Phone: 0800 37 34 15
Fax: (44) (0) 1235 533420
info.EMEA@bio-techne.com

General Contact Information

www.novusbio.com
Technical Support: nb-technical@bio-
techne.com
Orders: nb-customerservice@bio-techne.com
General: novus@novusbio.com

Limitations

This product is for research use only and is not approved for use in humans or in clinical diagnosis. Kits are guaranteed for 6 months from date of receipt.

For more information on our 100% guarantee, please visit www.novusbio.com/guarantee

Earn gift cards/discounts by submitting a review: www.novusbio.com/reviews/submit/MoIB00001

Earn gift cards/discounts by submitting a publication using this product:
www.novusbio.com/publications

