

Product Datasheet

MCM7 Antibody (2068C) - Azide and BSA Free MAB92171

Unit Size: 100 ug

Store at -20C. Avoid freeze-thaw cycles.

www.novusbio.com



technical@novusbio.com

Protocols, Publications, Related Products, Reviews, Research Tools and Images at:
www.novusbio.com/MAB92171

Updated 7/28/2025 v.20.1

Earn rewards for product
reviews and publications.

Submit a publication at www.novusbio.com/publications

Submit a review at www.novusbio.com/reviews/destination/MAB92171



MAB92171

MCM7 Antibody (2068C) - Azide and BSA Free

| Product Information | |
|---------------------|--|
| Unit Size | 100 ug |
| Concentration | 1.0 mg/ml |
| Storage | Store at -20C. Avoid freeze-thaw cycles. |
| Clonality | Monoclonal |
| Clone | 2068C |
| Preservative | No Preservative |
| Isotype | IgG |
| Purity | Protein A or G purified |
| Buffer | PBS |

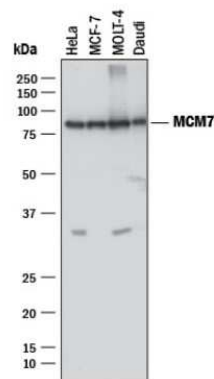
| Product Description | |
|---------------------|--|
| Description | >90% by SDS PAGE |
| Host | Rabbit |
| Gene ID | 4176 |
| Gene Symbol | MCM7 |
| Species | Human |
| Immunogen | Partial recombinant human MCM-7 protein (amino acids 188-328) [UniProt P33993] |

| Product Application Details | |
|-----------------------------|--|
| Applications | Western Blot, Flow Cytometry, Immunohistochemistry, CyTOF-ready, Immunocytochemistry |
| Recommended Dilutions | Western Blot, Flow Cytometry, Immunohistochemistry, Immunocytochemistry, CyTOF-ready |
| Application Notes | This antibody is Cytof ready. |

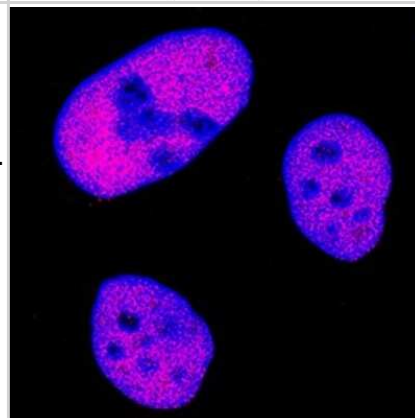


Images

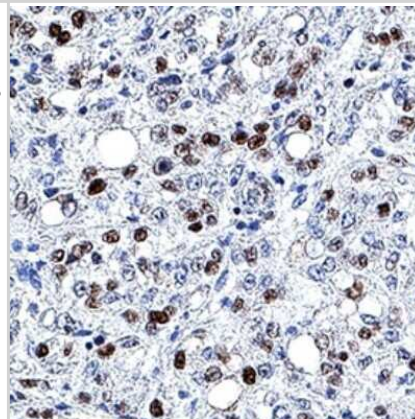
Western Blot: MCM7 Antibody (2068C) [MAB92171] - Analysis of HeLa, MCF-7, and MOLT-4, Daudi cell lysates with 0.5 ug/ml of hMCM7 Monoclonal Antibody followed by HRP-conjugated Anti-Rabbit IgG Antibody. A specific band was detected for hMCM7 at approximately 80 kDa (as indicated). This experiment was conducted under reducing conditions and using Immunoblot Buffer Group 1.



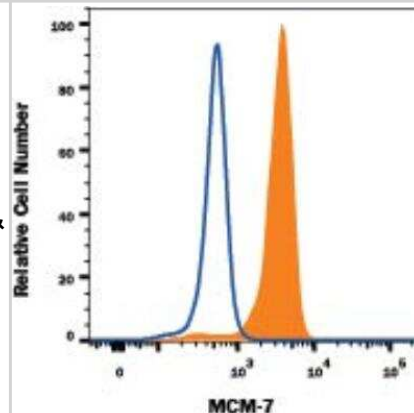
Immunocytochemistry: MCM7 Antibody (2068C) [MAB92171] - MCM-7 was detected in immersion fixed HeLa cell using MCM-7 Monoclonal Antibody at 1 ug/ml dilution. Cells were stained using the NorthernLights 557-conjugated Anti-Rabbit IgG Secondary Antibody (red) and counterstained with DAPI (blue). Specific staining was localized to nuclei.



Immunohistochemistry: MCM7 Antibody (2068C) [MAB92171] - MCM-7 was detected in immersion fixed paraffin-embedded sections of human mesothelioma using MCM-7 Monoclonal Antibody at 3 ug/ml. Tissue was stained using Rabbit IgG VisUCyte HRP Polymer Antibody (brown) and counterstained with hematoxylin (blue). Specific staining was localized to nuclei in cancer cells.



Flow Cytometry: MCM7 Antibody (2068C) - Azide Free [MAB92171] - HeLa human cervical epithelial carcinoma cell line was stained with Rabbit Anti-Human MCM7 Monoclonal Antibody (Catalog # MAB92171, filled histogram) or isotype control antibody (Catalog # AB-105-C, open histogram), followed by Allophycocyanin-conjugated Anti-Rabbit IgG Secondary Antibody (Catalog # F0111). To facilitate intracellular staining, cells were fixed and permeabilized with FlowX FoxP3 Fixation & Permeabilization Buffer Kit (Catalog # FC012).





Novus Biologicals USA

10730 E. Briarwood Avenue
Centennial, CO 80112
USA
Phone: 303.730.1950
Toll Free: 1.888.506.6887
Fax: 303.730.1966
nb-customerservice@bio-techne.com

Bio-Techne Canada

21 Canmotor Ave
Toronto, ON M8Z 4E6
Canada
Phone: 905.827.6400
Toll Free: 855.668.8722
Fax: 905.827.6402
canada.inquires@bio-techne.com

Bio-Techne Ltd

19 Barton Lane
Abingdon Science Park
Abingdon, OX14 3NB, United Kingdom
Phone: (44) (0) 1235 529449
Free Phone: 0800 37 34 15
Fax: (44) (0) 1235 533420
info.EMEA@bio-techne.com

General Contact Information

www.novusbio.com
Technical Support: nb-technical@bio-techne.com
Orders: nb-customerservice@bio-techne.com
General: novus@novusbio.com

Products Related to MAB92171

| | |
|------------------|---|
| HAF008 | Goat anti-Rabbit IgG Secondary Antibody [HRP] |
| NB7160 | Goat anti-Rabbit IgG (H+L) Secondary Antibody [HRP] |
| NBP2-24891 | Rabbit IgG Isotype Control |
| NBP2-51540-0.1mg | Recombinant Human MCM7 His Protein |

Limitations

This product is for research use only and is not approved for use in humans or in clinical diagnosis. Primary Antibodies are guaranteed for 1 year from date of receipt.

For more information on our 100% guarantee, please visit www.novusbio.com/guarantee

Earn gift cards/discounts by submitting a review: www.novusbio.com/reviews/submit/MAB92171

Earn gift cards/discounts by submitting a publication using this product:
www.novusbio.com/publications

