

# Product Datasheet

## Lactate Dehydrogenase A/LDHA Antibody (2066A) - Azide and BSA Free MAB9216

Unit Size: 100 ug

Store at -20C in the dark. Avoid freeze-thaw cycles.

[www.novusbio.com](http://www.novusbio.com)



[technical@novusbio.com](mailto:technical@novusbio.com)

Protocols, Publications, Related Products, Reviews, Research Tools and Images at:  
[www.novusbio.com/MAB9216](http://www.novusbio.com/MAB9216)

Updated 7/28/2025 v.20.1

Earn rewards for product  
reviews and publications.

Submit a publication at [www.novusbio.com/publications](http://www.novusbio.com/publications)

Submit a review at [www.novusbio.com/reviews/destination/MAB9216](http://www.novusbio.com/reviews/destination/MAB9216)



**MAB9216**

Lactate Dehydrogenase A/LDHA Antibody (2066A) - Azide and BSA Free

<b>Product Information</b>	
<b>Unit Size</b>	100 ug
<b>Concentration</b>	1.0 mg/ml
<b>Storage</b>	Store at -20C in the dark. Avoid freeze-thaw cycles.
<b>Clonality</b>	Monoclonal
<b>Clone</b>	2066A
<b>Preservative</b>	No Preservative
<b>Isotype</b>	IgG
<b>Purity</b>	Protein A or G purified
<b>Buffer</b>	PBS

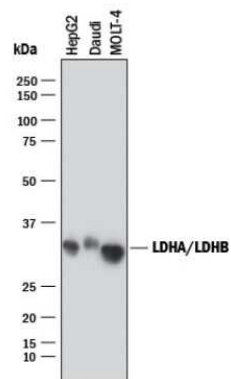
<b>Product Description</b>	
<b>Description</b>	>90% by SDS PAGE
<b>Host</b>	Rabbit
<b>Gene ID</b>	3939
<b>Gene Symbol</b>	LDHA
<b>Species</b>	Human
<b>Immunogen</b>	rhLDH-A aa2-92

<b>Product Application Details</b>	
<b>Applications</b>	Western Blot, Flow Cytometry (Negative), Immunocytochemistry
<b>Recommended Dilutions</b>	Western Blot, Flow Cytometry (Negative), Immunocytochemistry

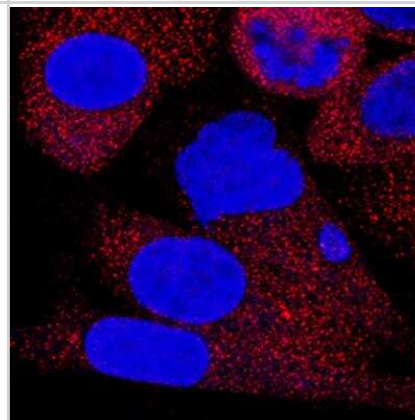


## Images

Western Blot: Lactate Dehydrogenase A/LDHA Antibody (2066A) [MAB9216] - Analysis of HepG2, Daudi and MOLT-4 cells lysates with 0.5 ug/ml of hLDHA/LDHB Monoclonal Antibody followed by HRP-conjugated Anti-Rabbit IgG Antibody. A specific band was detected for hLDHA/LDHB at approximately 34-36 kDa (as indicated). This experiment was conducted under reducing conditions and using Immunoblot Buffer Group 1.



Immunocytochemistry: Lactate Dehydrogenase A/LDHA Antibody (2066A) [MAB9216] - Lactate Dehydrogenase A/LDHA was detected in immersion fixed PC3 cell using Lactate Dehydrogenase A/LDHA Monoclonal Antibody at 1 ug/ml dilution. Cells were stained using Donkey anti-Rabbit IgG Secondary Antibody [NL557] (red) and counterstained with DAPI (blue). Specific staining was localized to cytoplasmic.





### **Novus Biologicals USA**

10730 E. Briarwood Avenue  
Centennial, CO 80112  
USA  
Phone: 303.730.1950  
Toll Free: 1.888.506.6887  
Fax: 303.730.1966  
nb-customerservice@bio-techne.com

### **Bio-Techne Canada**

21 Canmotor Ave  
Toronto, ON M8Z 4E6  
Canada  
Phone: 905.827.6400  
Toll Free: 855.668.8722  
Fax: 905.827.6402  
canada.inquires@bio-techne.com

### **Bio-Techne Ltd**

19 Barton Lane  
Abingdon Science Park  
Abingdon, OX14 3NB, United Kingdom  
Phone: (44) (0) 1235 529449  
Free Phone: 0800 37 34 15  
Fax: (44) (0) 1235 533420  
info.EMEA@bio-techne.com

### **General Contact Information**

www.novusbio.com  
Technical Support: nb-technical@bio-techne.com  
Orders: nb-customerservice@bio-techne.com  
General: novus@novusbio.com

### **Products Related to MAB9216**

---

HAF008	Goat anti-Rabbit IgG Secondary Antibody [HRP]
NB7160	Goat anti-Rabbit IgG (H+L) Secondary Antibody [HRP]
NBP2-24891	Rabbit IgG Isotype Control
NBP1-48336PEP	Lactate Dehydrogenase A/LDHA Antibody Blocking Peptide

---

### **Limitations**

This product is for research use only and is not approved for use in humans or in clinical diagnosis. Primary Antibodies are guaranteed for 1 year from date of receipt.

For more information on our 100% guarantee, please visit [www.novusbio.com/guarantee](http://www.novusbio.com/guarantee)

Earn gift cards/discounts by submitting a review: [www.novusbio.com/reviews/submit/MAB9216](http://www.novusbio.com/reviews/submit/MAB9216)

Earn gift cards/discounts by submitting a publication using this product:  
[www.novusbio.com/publications](http://www.novusbio.com/publications)

