

Product Datasheet

Rat Laminin ELISA Kit (Colorimetric) KA0379

Unit Size: 1 Kit

Store at 4C short term. Aliquot and store at -20C long term. Avoid freeze-thaw cycles.

www.novusbio.com



technical@novusbio.com

Publications: 3

Protocols, Publications, Related Products, Reviews, Research Tools and Images at:
www.novusbio.com/KA0379

Updated 10/23/2024 v.20.1

Earn rewards for product
reviews and publications.

Submit a publication at www.novusbio.com/publications

Submit a review at www.novusbio.com/reviews/destination/KA0379



KA0379**Rat Laminin ELISA Kit (Colorimetric)**

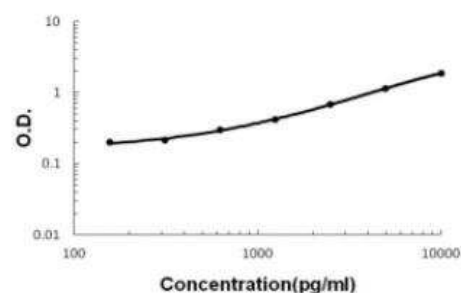
Product Information	
Unit Size	1 Kit
Concentration	Concentration is not relevant for this product. Please see the protocols for proper use of this product.
Storage	Store at 4C short term. Aliquot and store at -20C long term. Avoid freeze-thaw cycles.

Product Description	
Description	Laminin (Rat) ELISA Kit is a sandwich enzyme immunoassay for the quantitative measurement of rat laminin.
Gene ID	284217
Gene Symbol	LAMA1
Species	Rat
Notes	This product is produced by and distributed for Abnova, a company based in Taiwan.
Standard Curve Range	156 to 10000 pg/mL
Sensitivity	10 pg/mL
Inter Assay	CV% <6.3%
Intra Assay	CV% < 5.5%
Assay Type	Sandwich ELISA
Suitable Sample Type	Cell Culture Supernatant, Plasma (EDTA, Heparin), Serum
Sample Volume	100 uL

Product Application Details	
Applications	ELISA, Quantification
Recommended Dilutions	ELISA, Quantification

Images

ELISA: Rat Laminin ELISA Kit [KA0379] - Standard curve for Rat Laminin ELISA Kit [KA0379].



Publications

Sasaki M, Kato S, Kohno K et al. Sequence of the cDNA encoding the laminin B1 chain reveals a multidomain protein containing cysteine-rich repeats. Proc Natl Acad Sci U S A. 1987-02-01 [PMID: 3493487]

Nagayoshi T, Mattei MG, Passage E et al. Human laminin A chain (LAMA) gene: chromosomal mapping to locus 18p11.3. Genomics. 1989-11-01 [PMID: 2591971]

Haaparanta T, Uitto J, Ruoslahti E, Engvall E. Molecular cloning of the cDNA encoding human laminin A chain. Matrix. 1991-06-01 [PMID: 1714537]





Novus Biologicals USA

10730 E. Briarwood Avenue
Centennial, CO 80112
USA
Phone: 303.730.1950
Toll Free: 1.888.506.6887
Fax: 303.730.1966
nb-customerservice@bio-techne.com

Bio-Techne Canada

21 Canmotor Ave
Toronto, ON M8Z 4E6
Canada
Phone: 905.827.6400
Toll Free: 855.668.8722
Fax: 905.827.6402
canada.inquires@bio-techne.com

Bio-Techne Ltd

19 Barton Lane
Abingdon Science Park
Abingdon, OX14 3NB, United Kingdom
Phone: (44) (0) 1235 529449
Free Phone: 0800 37 34 15
Fax: (44) (0) 1235 533420
info.EMEA@bio-techne.com

General Contact Information

www.novusbio.com
Technical Support: nb-technical@bio-techne.com
Orders: nb-customerservice@bio-techne.com
General: novus@novusbio.com

Products Related to KA0379

NBP2-42384PEP	Laminin Recombinant Protein Antigen
236-EG-200	EGF [Unconjugated]
NB300-144	Laminin Antibody
NB100-56503	Cytochrome c Antibody (7H8.2C12) - BSA Free

Limitations

This product is for research use only and is not approved for use in humans or in clinical diagnosis. ELISA Kits are guaranteed for 6 months from date of receipt.

For more information on our 100% guarantee, please visit www.novusbio.com/guarantee

Earn gift cards/discounts by submitting a review: www.novusbio.com/reviews/submit/KA0379

Earn gift cards/discounts by submitting a publication using this product:
www.novusbio.com/publications

