

# Product Datasheet

## Claudin-19 Antibody (2F2) - Azide and BSA Free H00149461-M02

Unit Size: 0.1 mg

Aliquot and store at -20C or -80C. Avoid freeze-thaw cycles.

[www.novusbio.com](http://www.novusbio.com)



[technical@novusbio.com](mailto:technical@novusbio.com)

### Publications: 5

Protocols, Publications, Related Products, Reviews, Research Tools and Images at:  
[www.novusbio.com/H00149461-M02](http://www.novusbio.com/H00149461-M02)

Updated 9/9/2025 v.20.1

Earn rewards for product  
reviews and publications.

Submit a publication at [www.novusbio.com/publications](http://www.novusbio.com/publications)

Submit a review at [www.novusbio.com/reviews/destination/H00149461-M02](http://www.novusbio.com/reviews/destination/H00149461-M02)



**H00149461-M02**

Claudin-19 Antibody (2F2) - Azide and BSA Free

Product Information	
Unit Size	0.1 mg
Concentration	Concentrations vary lot to lot. See vial label for concentration. If unlisted please contact technical services.
Storage	Aliquot and store at -20C or -80C. Avoid freeze-thaw cycles.
Clonality	Monoclonal
Clone	2F2
Preservative	No Preservative
Isotype	IgG2a Kappa
Purity	IgG purified
Buffer	In 1x PBS, pH 7.4

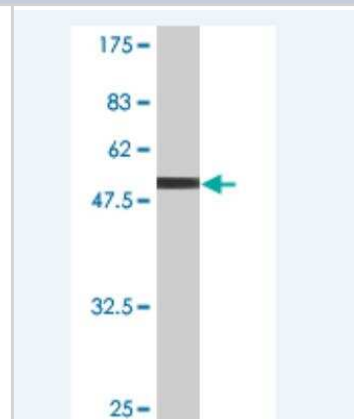
Product Description	
Description	Novus Biologicals Mouse Claudin-19 Antibody (2F2) - Azide and BSA Free (H00149461-M02) is a monoclonal antibody validated for use in WB, ELISA and ICC/IF. Anti-Claudin-19 Antibody: Cited in 5 publications. All Novus Biologicals antibodies are covered by our 100% guarantee.
Host	Mouse
Gene ID	149461
Gene Symbol	CLDN19
Species	Human, Mouse
Reactivity Notes	Mouse reactivity reported in scientific literature (PMID: 28524846).
Specificity/Sensitivity	CLDN19 - claudin 19 (2F2)
Immunogen	CLDN19 (AAH30524, 1 a.a. ~ 211 a.a) full-length recombinant protein with GST tag. MW of the GST tag alone is 26 KDa. MANSGLQLLGYFLALGGWVGIISTALPQWKQSSYAGDAITAVGLYEGLWMS CASQSTGQVQCKLYDSLLALDGHISARALMVAVLLGFVAMVLSVVGKCTR VGDSNPIAKGRVAIAGGALFILAGLCTLTAVSWYATLVTQEFFNPSTPVNARYEF GPALFVGWASAGLAVLGGSFLLCCTCPEPERPNSSPQPYPGSAAREYV
Notes	This product is produced by and distributed for Abnova, a company based in Taiwan.

Product Application Details	
Applications	Western Blot, ELISA, Immunocytochemistry/ Immunofluorescence
Recommended Dilutions	Western Blot 1:500, ELISA 1:100-1:2000, Immunocytochemistry/ Immunofluorescence 1:10-1:2000
Application Notes	Antibody Reactive Against Recombinant Protein with GST tag on ELISA and Western Blot. GST tag alone is used as a negative control. Immunocytochemistry/Immunofluorescence was reported in scientific literature.

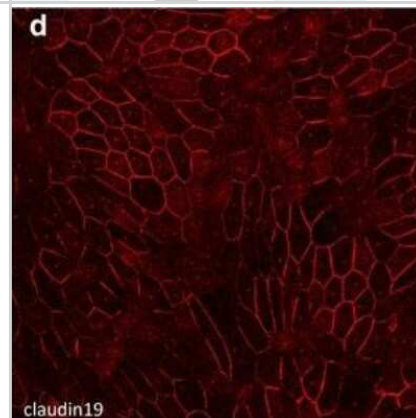


## Images

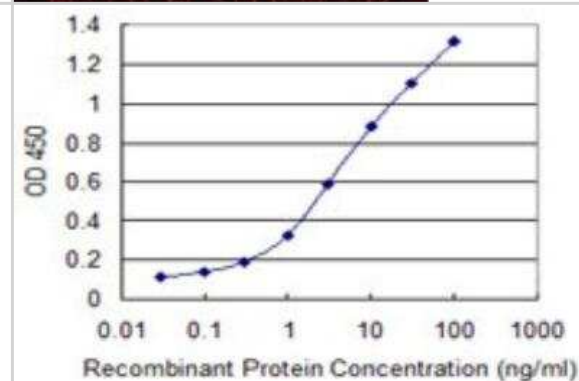
Western Blot: Claudin-19 Antibody (2F2) [H00149461-M02] - Detection against Immunogen (48.95 KDa) .



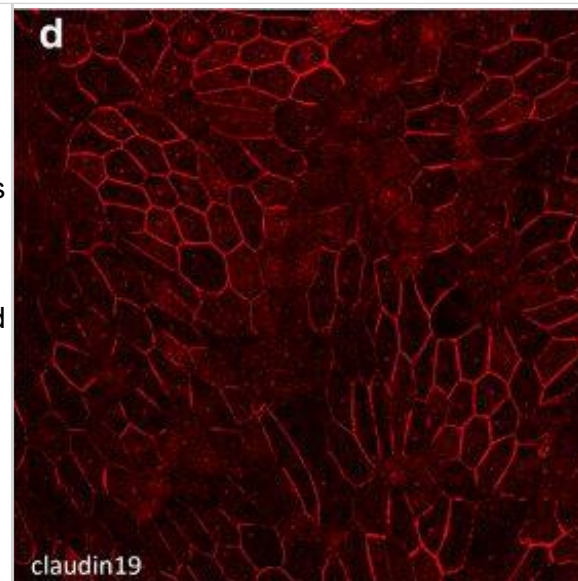
Immunocytochemistry/Immunofluorescence: Claudin-19 Antibody (2F2) [H00149461-M02] - Tight junction proteins and the transepithelial resistance of iPSC-RPE. RPE cells were cultured on laminin-coated Transwell inserts. Immunostaining of the iPSC-RPE cells revealed surface expression of the claudin19. Image collected and cropped by CiteAb from the following publication (<https://stemcellres.biomedcentral.com/articles/10.1186/s13287-017-0652-9>), licensed under a CC-BY license.



ELISA: Claudin-19 Antibody (2F2) [H00149461-M02] - Detection limit for recombinant GST tagged CLDN19 is 0.1 ng/ml as a capture antibody.



Immunocytochemistry/ Immunofluorescence: Claudin-19 Antibody (2F2) [H00149461-M02] - Tight junction proteins & the transepithelial resistance of iPSC-RPE. RPE cells were cultured on laminin-coated Transwell inserts. a Phalloidin labeling demonstrates the cortical arrangement of actin filaments in iPSC-RPE. b–d Immunostaining of the iPSC-RPE cells revealed surface expression of the tight junction proteins ZO-1 (b), occludin (c), & claudin19 (d). e To assess the barrier function of the iPSC-RPE cells, the resistance across monolayers of cells cultured on laminin-coated Transwell inserts was measured at 2-week intervals, following initiation of the cultures. The net TER was determined by subtracting the resistance across a laminin-coated Transwell insert lacking cells, & multiplying by the surface area of the insert (0.33 cm<sup>2</sup>). The net TER of the iPSC-RPE cells steadily increased between weeks 2 & 8, until it reached a maximal value of just above 200  $\Omega$ .cm<sup>2</sup>. Resistance recordings were made from four individual cultures. e Error bars represent the mean  $\pm$  the SEM. Scale bars: a–d = 20  $\mu$ m. ZO-1 zonula occludens-1, TER transepithelial resistance Image collected & cropped by CiteAb from the following publication (<https://stemcellres.biomedcentral.com/articles/10.1186/s13287-017-0652-9>), licensed under a CC-BY license. Not internally tested by Novus Biologicals.



## Publications

□lvarez-Barrios A, □lvarez L, Artime E et al. Altered zinc homeostasis in a primary cell culture model of the retinal pigment epithelium *Frontiers in Nutrition* 2023-04-17 [PMID: 37139441] (Western Blot, Immunocytochemistry/ Immunofluorescence, Human)

Álvarez-Barrios A, Álvarez L, Pereiro R et Al. Elemental mass spectrometry to study metallo-transcriptomic changes during the in vitro degeneration of the retinal pigment epithelium *Anal Bioanal Chem* 2023-07-29 [PMID: 37507467]

Hazim RA, Karumbayaram S, Jiang M et al. Differentiation of RPE cells from integration-free iPS cells and their cell biological characterization. *Stem Cell Res Ther.* 2017-10-02 [PMID: 28969679] (ICC/IF, Human)

Benedicto I, Lehmann GL, Ginsberg M et al. Concerted regulation of retinal pigment epithelium basement membrane and barrier function by angiocrine factors. *Nat Commun.* 2017-05-19 [PMID: 28524846] (ICC/IF, Mouse)

Peng S, Adelman RA, Rizzolo LJ. Minimal effects of VEGF and anti-VEGF drugs on the permeability or selectivity of RPE tight junctions *Invest Ophthalmol Vis Sci* 2010-06-01 [PMID: 20042644] (WB, ICC/IF, Human)



### **Novus Biologicals USA**

10730 E. Briarwood Avenue  
Centennial, CO 80112  
USA  
Phone: 303.730.1950  
Toll Free: 1.888.506.6887  
Fax: 303.730.1966  
nb-customerservice@bio-techne.com

### **Bio-Techne Canada**

21 Canmotor Ave  
Toronto, ON M8Z 4E6  
Canada  
Phone: 905.827.6400  
Toll Free: 855.668.8722  
Fax: 905.827.6402  
canada.inquires@bio-techne.com

### **Bio-Techne Ltd**

19 Barton Lane  
Abingdon Science Park  
Abingdon, OX14 3NB, United Kingdom  
Phone: (44) (0) 1235 529449  
Free Phone: 0800 37 34 15  
Fax: (44) (0) 1235 533420  
info.EMEA@bio-techne.com

### **General Contact Information**

www.novusbio.com  
Technical Support: nb-technical@bio-techne.com  
Orders: nb-customerservice@bio-techne.com  
General: novus@novusbio.com

### **Products Related to H00149461-M02**

---

NBP2-33376H	Blue Marker Antibody (6F4-F6) [HRP]
HAF007	Goat anti-Mouse IgG Secondary Antibody [HRP]
NB7539	Goat anti-Mouse IgG (H+L) Secondary Antibody [HRP]
NBP1-96981-0.5mg	Mouse IgG2a Kappa Isotype Control (M2AK)

---

### **Limitations**

This product is for research use only and is not approved for use in humans or in clinical diagnosis. Primary Antibodies are guaranteed for 1 year from date of receipt.

For more information on our 100% guarantee, please visit [www.novusbio.com/guarantee](http://www.novusbio.com/guarantee)

Earn gift cards/discounts by submitting a review: [www.novusbio.com/reviews/submit/H00149461-M02](http://www.novusbio.com/reviews/submit/H00149461-M02)

Earn gift cards/discounts by submitting a publication using this product:  
[www.novusbio.com/publications](http://www.novusbio.com/publications)

