

# Product Datasheet

## LRG1 Antibody (2E3) - Azide and BSA Free H00116844-M01

Unit Size: 0.1 mg

Aliquot and store at -20C or -80C. Avoid freeze-thaw cycles.

[www.novusbio.com](http://www.novusbio.com)



[technical@novusbio.com](mailto:technical@novusbio.com)

### Publications: 6

Protocols, Publications, Related Products, Reviews, Research Tools and Images at:  
[www.novusbio.com/H00116844-M01](http://www.novusbio.com/H00116844-M01)

Updated 9/9/2025 v.20.1

Earn rewards for product  
reviews and publications.

Submit a publication at [www.novusbio.com/publications](http://www.novusbio.com/publications)

Submit a review at [www.novusbio.com/reviews/destination/H00116844-M01](http://www.novusbio.com/reviews/destination/H00116844-M01)



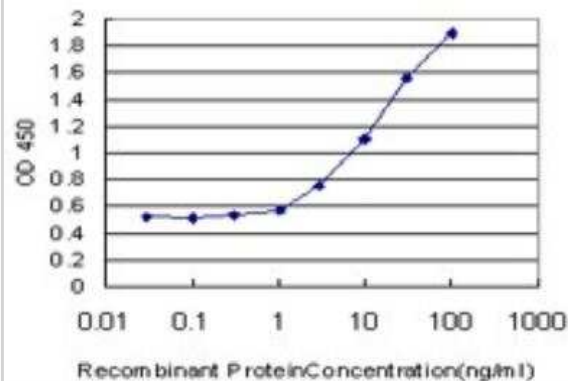
**H00116844-M01**

LRG1 Antibody (2E3) - Azide and BSA Free

Product Information	
<b>Unit Size</b>	0.1 mg
<b>Concentration</b>	Concentrations vary lot to lot. See vial label for concentration. If unlisted please contact technical services.
<b>Storage</b>	Aliquot and store at -20C or -80C. Avoid freeze-thaw cycles.
<b>Clonality</b>	Monoclonal
<b>Clone</b>	2E3
<b>Preservative</b>	No Preservative
<b>Isotype</b>	IgG2b Kappa
<b>Purity</b>	IgG purified
<b>Buffer</b>	In 1x PBS, pH 7.4
Product Description	
<b>Description</b>	Novus Biologicals Mouse LRG1 Antibody (2E3) - Azide and BSA Free (H00116844-M01) is a monoclonal antibody validated for use in WB, ELISA and ICC/IF. Anti-LRG1 Antibody: Cited in 6 publications. All Novus Biologicals antibodies are covered by our 100% guarantee.
<b>Host</b>	Mouse
<b>Gene ID</b>	116844
<b>Gene Symbol</b>	LRG1
<b>Species</b>	Human
<b>Reactivity Notes</b>	Other species not tested.
<b>Specificity/Sensitivity</b>	leucine-rich alpha-2-glycoprotein 1
<b>Immunogen</b>	LRG1 (AAH34389, 37 a.a. ~ 347 a.a) full-length recombinant protein with GST tag. MW of the GST tag alone is 26 KDa. TLSPKDCQVFRPDHGSSISCQPPAEIPGYLPADTVHLAVEFFNLTHLPANLLQG ASKLQELHLSSNGLESLSPEFLRPVPLRVLDLTRNALTGLPSGLFQASATLDT LVLKENQLEVLEVSWLHGLKALGHLDLSGNRLRKLPPGLLANFTLLRTLDLGEN QLETLPDILLRGPLQLERLHLEGNKLQVLGKDLLLPQPDRLRYLFLNGNKLARVA AGAFQGLRQLDMLDLSNNSLASVPEGLWASLGQPNWDMRDGFDISGNPWIC DQNLSDLYRWLQAQRDKMFSQNDTRCAGPEAVKGGQTLLAVAKSQ
<b>Notes</b>	This product is produced by and distributed for Abnova, a company based in Taiwan.
Product Application Details	
<b>Applications</b>	Western Blot, ELISA, Immunocytochemistry/ Immunofluorescence
<b>Recommended Dilutions</b>	Western Blot 1:500, ELISA 1:100-1:2000, Immunocytochemistry/ Immunofluorescence
<b>Application Notes</b>	Antibody reactive against recombinant protein with GST tag on ELISA and Western Blot. GST tag alone is used as a negative control.

## Images

ELISA: LRG1 Antibody (2E3) [H00116844-M01] - Detection limit for recombinant GST tagged LRG1 is approximately 0.3ng/ml as a capture antibody.



## Publications

Ronald J, Katherine S, LeeAnn H et al. Intracellular leucine-rich alpha-2-glycoprotein-1 competes with Apaf-1 for binding cytochrome c in protecting MCF-7 breast cancer cells from apoptosis. *Apoptosis*. 2021-01-01 [PMID: 33386492]

Singh H, Yu Y, Suh MJ et al. Type 1 Diabetes: Urinary Proteomics and Protein Network Analysis Support Perturbation of Lysosomal Function. *Theranostics* 2017-07-07 [PMID: 28819457]

Druhan LJ, Lance A, Li S et al. Leucine Rich alpha-2 Glycoprotein: A Novel Neutrophil Granule Protein and Modulator of Myelopoiesis. *PLoS One* 2017-01-12 [PMID: 28081565]

Lynch J, Fay J, Meehan M et al. MiRNA-335 Suppresses Neuroblastoma Cell Invasiveness By Direct Targeting of Multiple Genes from the non-Canonical TGF- $\beta$  Signalling Pathway. *Carcinogenesis*. 2012-03-01 [PMID: 22382496]

Satoh K, Maniwa T, Oda T, Matsumoto K. Proteomic profiling for the identification of serum diagnostic biomarkers for abdominal and thoracic aortic aneurysms. *Proteome Sci*. 2013-06-27 [PMID: 23802875]

Banfi C, Parolari A, Brioschi M et al. Proteomic analysis of plasma from patients undergoing coronary artery bypass grafting reveals a protease/antiprotease imbalance in favor of the serpin alpha1-antichymotrypsin. *J Proteome Res* 2010-05-07 [PMID: 20302328] (WB, Human)



### **Novus Biologicals USA**

10730 E. Briarwood Avenue  
Centennial, CO 80112  
USA  
Phone: 303.730.1950  
Toll Free: 1.888.506.6887  
Fax: 303.730.1966  
nb-customerservice@bio-techne.com

### **Bio-Techne Canada**

21 Canmotor Ave  
Toronto, ON M8Z 4E6  
Canada  
Phone: 905.827.6400  
Toll Free: 855.668.8722  
Fax: 905.827.6402  
canada.inquires@bio-techne.com

### **Bio-Techne Ltd**

19 Barton Lane  
Abingdon Science Park  
Abingdon, OX14 3NB, United Kingdom  
Phone: (44) (0) 1235 529449  
Free Phone: 0800 37 34 15  
Fax: (44) (0) 1235 533420  
info.EMEA@bio-techne.com

### **General Contact Information**

www.novusbio.com  
Technical Support: nb-technical@bio-techne.com  
Orders: nb-customerservice@bio-techne.com  
General: novus@novusbio.com

### **Products Related to H00116844-M01**

---

NBP2-33376H	Blue Marker Antibody (6F4-F6) [HRP]
HAF007	Goat anti-Mouse IgG Secondary Antibody [HRP]
NB7539	Goat anti-Mouse IgG (H+L) Secondary Antibody [HRP]
NBP1-43317-0.5mg	Mouse IgG2b Kappa Light Chain Isotype Control (MG2b)

---

### **Limitations**

This product is for research use only and is not approved for use in humans or in clinical diagnosis. Primary Antibodies are guaranteed for 1 year from date of receipt.

For more information on our 100% guarantee, please visit [www.novusbio.com/guarantee](http://www.novusbio.com/guarantee)

Earn gift cards/discounts by submitting a review: [www.novusbio.com/reviews/submit/H00116844-M01](http://www.novusbio.com/reviews/submit/H00116844-M01)

Earn gift cards/discounts by submitting a publication using this product:  
[www.novusbio.com/publications](http://www.novusbio.com/publications)

