

Product Datasheet

ERO1L Antibody (4G3) - Azide and BSA Free H00030001-M01

Unit Size: 0.1 mg

Aliquot and store at -20C or -80C. Avoid freeze-thaw cycles.

www.novusbio.com



technical@novusbio.com

Publications: 12

Protocols, Publications, Related Products, Reviews, Research Tools and Images at:
www.novusbio.com/H00030001-M01

Updated 9/9/2025 v.20.1

**Earn rewards for product
reviews and publications.**

Submit a publication at www.novusbio.com/publications

Submit a review at www.novusbio.com/reviews/destination/H00030001-M01



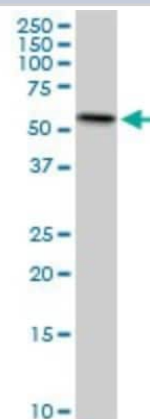
H00030001-M01

ERO1L Antibody (4G3) - Azide and BSA Free

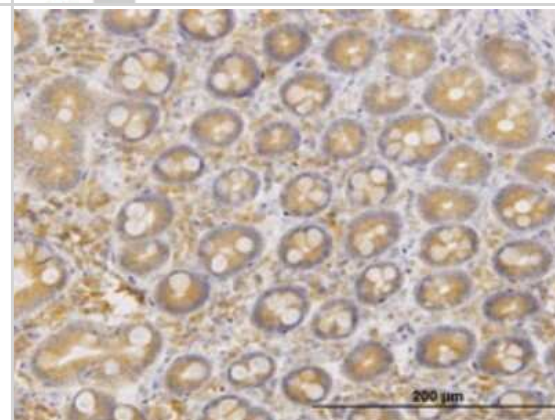
Product Information	
Unit Size	0.1 mg
Concentration	Concentrations vary lot to lot. See vial label for concentration. If unlisted please contact technical services.
Storage	Aliquot and store at -20C or -80C. Avoid freeze-thaw cycles.
Clonality	Monoclonal
Clone	4G3
Preservative	No Preservative
Isotype	IgG2b Kappa
Purity	IgG purified
Buffer	In 1x PBS, pH 7.4
Product Description	
Description	Novus Biologicals Mouse ERO1L Antibody (4G3) - Azide and BSA Free (H00030001-M01) is a monoclonal antibody validated for use in IHC, WB, ELISA and ICC/IF. Anti-ERO1L Antibody: Cited in 12 publications. All Novus Biologicals antibodies are covered by our 100% guarantee.
Host	Mouse
Gene ID	30001
Gene Symbol	ERO1A
Species	Human, Mouse, Rat
Specificity/Sensitivity	ERO1L - ERO1-like (<i>S. cerevisiae</i>)
Immunogen	ERO1L (NP_055399, 90 a.a. ~ 178 a.a) partial recombinant protein with GST tag. MW of the GST tag alone is 26 KDa. DISQCGRRDCAVKPCQSDEVPDGIKSASYKYSEEANNLIEECEQAERLGAVDE SLSEETQKAVLQWTKHDDSSDNFCEADDIQSPEAEY
Notes	This product is produced by and distributed for Abnova, a company based in Taiwan.
Product Application Details	
Applications	Western Blot, Immunohistochemistry-Paraffin, ELISA, Immunocytochemistry/Immunofluorescence, Immunohistochemistry, Sandwich ELISA
Recommended Dilutions	Western Blot 1:500, ELISA, Immunohistochemistry, Immunocytochemistry/Immunofluorescence, Immunohistochemistry-Paraffin, Sandwich ELISA
Application Notes	Antibody reactive against cell lysate, transfected lysate and recombinant protein for Western Blot. Has also been used for immunohistochemistry (paraffin) and ELISA.

Images

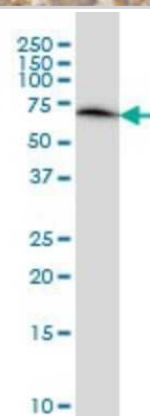
Western Blot: ERO1L Antibody (4G3) [H00030001-M01] - ERO1L monoclonal antibody (M01), clone 4G3. Analysis of ERO1L expression in PC-12.



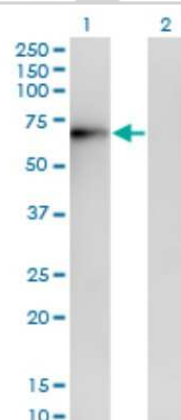
Immunohistochemistry-Paraffin: ERO1L Antibody (4G3) [H00030001-M01] - Analysis of monoclonal antibody to ERO1L on formalin-fixed paraffin-embedded human small Intestine. Antibody concentration 1.5 ug/ml.



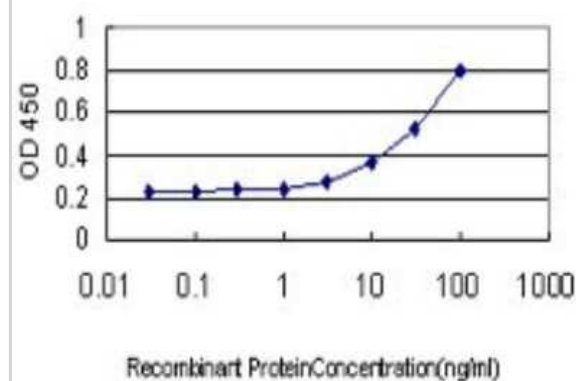
Western Blot: ERO1L Antibody (4G3) [H00030001-M01] - ERO1L monoclonal antibody (M01), clone 4G3 Analysis of ERO1L expression in HeLa.



Western Blot: ERO1L Antibody (4G3) [H00030001-M01] - Analysis of ERO1L expression in transfected 293T cell line by ERO1L monoclonal antibody (M01), clone 4G3. Lane 1: ERO1L transfected lysate (54 KDa). Lane 2: Non-transfected lysate.



Sandwich ELISA: ERO1L Antibody (4G3) [H00030001-M01] - Detection limit for recombinant GST tagged ERO1L is approximately 3ng/ml as a capture antibody.



Publications

Hu J, Jin J, Qu Y et al. ERO1 α inhibits cell apoptosis and regulates steroidogenesis in mouse granulosa cells. *Mol Cell Endocrinol.* 2020-05-04 [PMID: 32376276]

Takei N, Yoneda A, Kosaka M et al. ERO1 α is a novel endogenous marker of hypoxia in human cancer cell lines. *BMC Cancer.* 2019-05-29 [PMID: 31142270]

Kim K, An A, Park H et al. Combined expression of protein disulfide isomerase and endoplasmic reticulum oxidoreductin 1- α is a poor prognostic marker for non-small cell lung cancer. *Oncol Lett.* 2018-08-21 [PMID: 30344729]

Chen F, Wang Y, Liu Q et al. ERO1 α promotes testosterone secretion in hCG-stimulated mouse Leydig cells via activation of the PI3K/AKT/mTOR signaling pathway. *J Cell Physiol.* 2020-01-28 [PMID: 31990068]

F Zilli, P Marques Ra, P Auf der Ma, C Jehanno, A Sethi, MM Coissieux, T Eichlisber, L Sauter, A Rouchon, L Bonapace, J Pinto Cout, R Rad, MR Jensen, A Banfi, MB Stadler, M Bentires-A The NFIB-ERO1A axis promotes breast cancer metastatic colonization of disseminated tumour cells *Embo Molecular Medicine*, 2021-03-10;0(0):e13162. 2021-03-10 [PMID: 33751828]

Fenglei C, Jiarong S, Yujing W et al. Silica nanoparticles induce ovarian granulosa cell apoptosis via activation of the PERK-ATF4-CHOP-ERO1 α pathway-mediated IP3R1-dependent calcium mobilization. *Cell Biol Toxicol.* 2022-11-08 [PMID: 36346508]

Kim J, Haque MN, Goo TW et al. Alleviation of Hippocampal Endoplasmic Reticulum Stress by *Allomyrina dichotoma* Larvae Extract. *Am J Chin Med* 2018-03-29 [PMID: 29595074]

Kim J, Yun EY, Quan FS et al. Central Administration of 1-Deoxynojirimycin Attenuates Hypothalamic Endoplasmic Reticulum Stress and Regulates Food Intake and Body Weight in Mice with High-Fat Diet-Induced Obesity. *Evid Based Complement Alternat Med* 2017-07-17 [PMID: 28798799]

Tanaka T, Kutomi G, Kajiwara T et al. Cancer-associated oxidoreductase ERO1- α drives the production of VEGF via oxidative protein folding and regulating the mRNA level. *Br J Cancer* 2016-04-21 [PMID: 27100727]

Kim J, Yun EY, Park SW et al. *Allomyrina Dichotoma* Larvae Regulate Food Intake and Body Weight in High Fat Diet-Induced Obese Mice Through mTOR and Mapk Signaling Pathways. *Nutrients* 2016-02-18 [PMID: 26901224]

Hsu CH, Hsu CW, Hsueh C et al. Identification and Characterization of Potential Biomarkers by Quantitative Tissue Proteomics of Primary Lung Adenocarcinoma. *Mol Cell Proteomics* 2016-07-01 [PMID: 27161446]

Araki K, Iemura S, Kamiya Y et al. Ero1- α and PDIs constitute a hierarchical electron transfer network of endoplasmic reticulum oxidoreductases. *J Cell Biol.* 2013-09-16 [PMID: 24043701] (Human)



Novus Biologicals USA

10730 E. Briarwood Avenue
Centennial, CO 80112
USA
Phone: 303.730.1950
Toll Free: 1.888.506.6887
Fax: 303.730.1966
nb-customerservice@bio-techne.com

Bio-Techne Canada

21 Canmotor Ave
Toronto, ON M8Z 4E6
Canada
Phone: 905.827.6400
Toll Free: 855.668.8722
Fax: 905.827.6402
canada.inquires@bio-techne.com

Bio-Techne Ltd

19 Barton Lane
Abingdon Science Park
Abingdon, OX14 3NB, United Kingdom
Phone: (44) (0) 1235 529449
Free Phone: 0800 37 34 15
Fax: (44) (0) 1235 533420
info.EMEA@bio-techne.com

General Contact Information

www.novusbio.com
Technical Support: nb-technical@bio-techne.com
Orders: nb-customerservice@bio-techne.com
General: novus@novusbio.com

Products Related to H00030001-M01

NBP2-33376H	Blue Marker Antibody (6F4-F6) [HRP]
HAF007	Goat anti-Mouse IgG Secondary Antibody [HRP]
NB7539	Goat anti-Mouse IgG (H+L) Secondary Antibody [HRP]
NBP1-43317-0.5mg	Mouse IgG2b Kappa Light Chain Isotype Control (MG2b)

Limitations

This product is for research use only and is not approved for use in humans or in clinical diagnosis. Primary Antibodies are guaranteed for 1 year from date of receipt.

For more information on our 100% guarantee, please visit www.novusbio.com/guarantee

Earn gift cards/discounts by submitting a review: www.novusbio.com/reviews/submit/H00030001-M01

Earn gift cards/discounts by submitting a publication using this product:
www.novusbio.com/publications

