

Product Datasheet

ARFGEF1 Antibody (3E11) - Azide and BSA Free H00010565-M02

Unit Size: 0.1 mg

Aliquot and store at -20C or -80C. Avoid freeze-thaw cycles.

www.novusbio.com



technical@novusbio.com

Protocols, Publications, Related Products, Reviews, Research Tools and Images at:
www.novusbio.com/H00010565-M02

Updated 9/9/2025 v.20.1

Earn rewards for product
reviews and publications.

Submit a publication at www.novusbio.com/publications

Submit a review at www.novusbio.com/reviews/destination/H00010565-M02



H00010565-M02

ARFGEF1 Antibody (3E11) - Azide and BSA Free

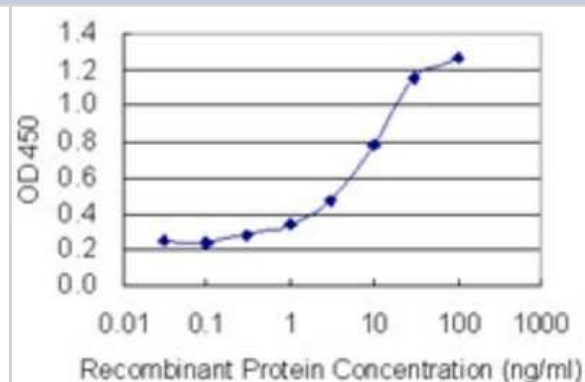
Product Information	
Unit Size	0.1 mg
Concentration	Concentrations vary lot to lot. See vial label for concentration. If unlisted please contact technical services.
Storage	Aliquot and store at -20C or -80C. Avoid freeze-thaw cycles.
Clonality	Monoclonal
Clone	3E11
Preservative	No Preservative
Isotype	IgG2a Kappa
Purity	IgG purified
Buffer	In 1x PBS, pH 7.4

Product Description	
Description	Novus Biologicals Mouse ARFGEF1 Antibody (3E11) - Azide and BSA Free (H00010565-M02) is a monoclonal antibody validated for use in WB and ELISA. All Novus Biologicals antibodies are covered by our 100% guarantee.
Host	Mouse
Gene ID	10565
Gene Symbol	ARFGEF1
Species	Human
Specificity/Sensitivity	This product is specific for Human ARFGEF1 monoclonal antibody (M02), clone 3E11 [Gene ID: 10565].
Immunogen	ARFGEF1 (NP_006412.2, 311 a.a. ~ 411 a.a) partial recombinant protein with GST tag. MW of the GST tag alone is 26 KDa. EVLYDGENHDCCEEKPKQDIVQNIVEEMVNIVVGDMDGEGTTINASADGNIGTIEDG SDSENIQANGIPGTPISVAYTPSLPDDRLSVSSNDTQESGNSSGPSP
Notes	This product is produced by and distributed for Abnova, a company based in Taiwan.

Product Application Details	
Applications	Western Blot, ELISA, Sandwich ELISA
Recommended Dilutions	Western Blot, ELISA, Sandwich ELISA
Application Notes	Mouse monoclonal antibody raised against a partial recombinant ARFGEF1.

Images

Sandwich ELISA: ARFGEF1 Antibody (3E11) [H00010565-M02] - Detection limit for recombinant GST tagged ARFGEF1 is 0.1 ng/ml as a capture antibody.





Novus Biologicals USA

10730 E. Briarwood Avenue
Centennial, CO 80112
USA

Phone: 303.730.1950

Toll Free: 1.888.506.6887

Fax: 303.730.1966

nb-customerservice@bio-techne.com

Bio-Techne Canada

21 Canmotor Ave
Toronto, ON M8Z 4E6
Canada

Phone: 905.827.6400

Toll Free: 855.668.8722

Fax: 905.827.6402

canada.inquires@bio-techne.com

Bio-Techne Ltd

19 Barton Lane
Abingdon Science Park
Abingdon, OX14 3NB, United Kingdom

Phone: (44) (0) 1235 529449

Free Phone: 0800 37 34 15

Fax: (44) (0) 1235 533420

info.EMEA@bio-techne.com

General Contact Information

www.novusbio.com

Technical Support: nb-technical@bio-techne.com

Orders: nb-customerservice@bio-techne.com

General: novus@novusbio.com

Products Related to H00010565-M02

NBP2-33376H

Blue Marker Antibody (6F4-F6) [HRP]

HAF007

Goat anti-Mouse IgG Secondary Antibody [HRP]

NB7539

Goat anti-Mouse IgG (H+L) Secondary Antibody [HRP]

NBP1-96981-0.5mg

Mouse IgG2a Kappa Isotype Control (M2AK)

Limitations

This product is for research use only and is not approved for use in humans or in clinical diagnosis. Primary Antibodies are guaranteed for 1 year from date of receipt.

For more information on our 100% guarantee, please visit www.novusbio.com/guarantee

Earn gift cards/discounts by submitting a review: www.novusbio.com/reviews/submit/H00010565-M02

Earn gift cards/discounts by submitting a publication using this product:

www.novusbio.com/publications

