

Product Datasheet

SUMO Activating Enzyme E1 (SAE1) Antibody (1G4-1G5) - Azide and BSA Free H00010055-M01

Unit Size: 0.1 mg

Aliquot and store at -20C or -80C. Avoid freeze-thaw cycles.

www.novusbio.com



technical@novusbio.com

Publications: 2

Protocols, Publications, Related Products, Reviews, Research Tools and Images at:
www.novusbio.com/H00010055-M01

Updated 9/9/2025 v.20.1

Earn rewards for product
reviews and publications.

Submit a publication at www.novusbio.com/publications

Submit a review at www.novusbio.com/reviews/destination/H00010055-M01



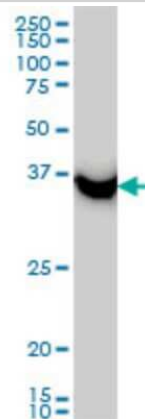
H00010055-M01**SUMO Activating Enzyme E1 (SAE1) Antibody (1G4-1G5) - Azide and BSA Free**

Product Information	
Unit Size	0.1 mg
Concentration	Concentrations vary lot to lot. See vial label for concentration. If unlisted please contact technical services.
Storage	Aliquot and store at -20C or -80C. Avoid freeze-thaw cycles.
Clonality	Monoclonal
Clone	1G4-1G5
Preservative	No Preservative
Isotype	IgG1 Lambda
Purity	IgG purified
Buffer	In 1x PBS, pH 7.4
Product Description	
Description	Novus Biologicals Mouse SUMO Activating Enzyme E1 (SAE1) Antibody (1G4-1G5) - Azide and BSA Free (H00010055-M01) is a monoclonal antibody validated for use in IHC, WB, ELISA and ICC/IF. Anti-SUMO Activating Enzyme E1 (SAE1) Antibody: Cited in 2 publications. All Novus Biologicals antibodies are covered by our 100% guarantee.
Host	Mouse
Gene ID	10055
Gene Symbol	SAE1
Species	Human
Reactivity Notes	Other species not tested.
Specificity/Sensitivity	SAE1 - SUMO-1 activating enzyme subunit 1
Immunogen	SAE1 (AAH00344, 1 a.a. ~ 346 a.a) full-length recombinant protein with GST tag. MW of the GST tag alone is 26 KDa. MVEKEEEAGGGISEEEAAQYDRQIRLWGLEAQKRLRASRVLLVGLKGLGAEIAK NLILAGVKGLTMLDHEQVTPEDPGAQFLIRTGSVGRNRAEASLERAQNLNPMV DVKVDTEIDIEKKPESFFTQFDAVCLTCCSRDVIVKVDQICHKNSIKFFTGDVFGY HGYTFANLGEHEFVEEKTKVAKVSQGVEDGPDTKRAKLDSSSETTMVKKKVV CPVKEALEVDWSSEKAKAALKRTTSDYFLLQVLLKFRDTKGRDPSSDTEEDS ELLQIRNDVLDLGLISPDLPEDFVRYCFSEMAPVCAVVGILAQEIVKALSQR DPPHNNFFFDGMKGNNGIVECLGPK
Notes	This product is produced by and distributed for Abnova, a company based in Taiwan.
Product Application Details	
Applications	Western Blot, Immunohistochemistry-Paraffin, ELISA, Immunocytochemistry/Immunofluorescence, Immunohistochemistry, Sandwich ELISA
Recommended Dilutions	Western Blot 1:500, ELISA 1:100-1:2000, Immunohistochemistry 1:10-1:500, Immunocytochemistry/ Immunofluorescence 1:10-1:500, Immunohistochemistry-Paraffin 1:10-1:500, Sandwich ELISA
Application Notes	Antibody reactive against cell lysate and recombinant protein for Western Blot. Has also been used for immunofluorescence, immunohistochemistry (paraffin), and ELISA.

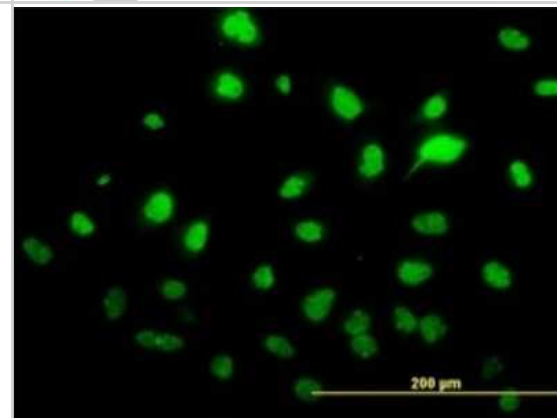


Images

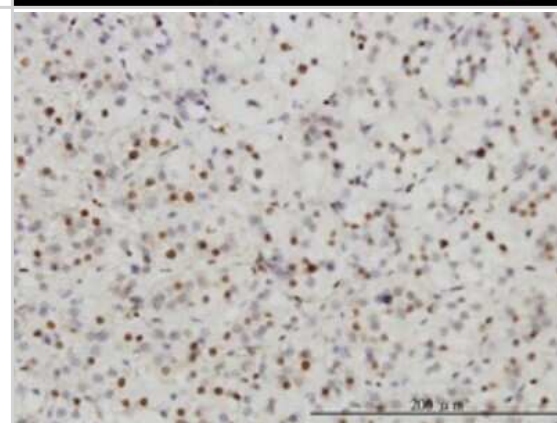
Western Blot: SUMO Activating Enzyme E1 (SAE1) Antibody (1G4-1G5) [H00010055-M01] - SAE1 monoclonal antibody (M01), clone 1G4-1G5
Analysis of SAE1 expression in HeLa.



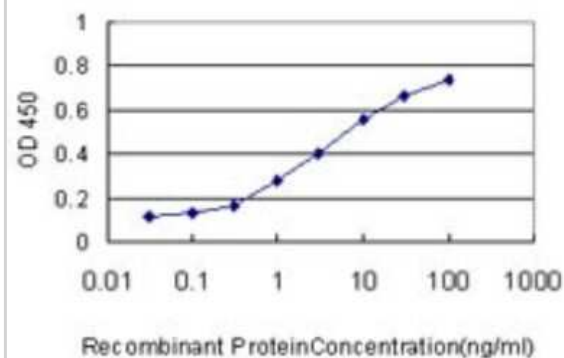
Immunocytochemistry/Immunofluorescence: SUMO Activating Enzyme E1 (SAE1) Antibody (1G4-1G5) [H00010055-M01] - Analysis of monoclonal antibody to SAE1 on HeLa cell. Antibody concentration 10 ug/ml.



Immunohistochemistry-Paraffin: SUMO Activating Enzyme E1 (SAE1) Antibody (1G4-1G5) [H00010055-M01] - Analysis of monoclonal antibody to SAE1 on formalin-fixed paraffin-embedded human adrenal gland. Antibody concentration 3 ug/ml.



Sandwich ELISA: SUMO Activating Enzyme E1 (SAE1) Antibody (1G4-1G5) [H00010055-M01] - Detection limit for recombinant GST tagged SAE1 is approximately 0.1ng/ml as a capture antibody.



Publications

Ge Y, Lu X, Shu X et al. Clinical characteristics of anti-SAE antibodies in Chinese patients with dermatomyositis in comparison with different patient cohorts. *Sci Rep* 2017-03-15 [PMID: 28298642]

Fujimoto M, Matsushita T, Hamaguchi Y et al. Autoantibodies to small ubiquitin-like modifier activating enzymes in Japanese patients with dermatomyositis: comparison with a UK Caucasian cohort. *Ann Rheum Dis*. 2012-07-26 [PMID: 22843487]





Novus Biologicals USA

10730 E. Briarwood Avenue
Centennial, CO 80112
USA
Phone: 303.730.1950
Toll Free: 1.888.506.6887
Fax: 303.730.1966
nb-customerservice@bio-techne.com

Bio-Techne Canada

21 Canmotor Ave
Toronto, ON M8Z 4E6
Canada
Phone: 905.827.6400
Toll Free: 855.668.8722
Fax: 905.827.6402
canada.inquires@bio-techne.com

Bio-Techne Ltd

19 Barton Lane
Abingdon Science Park
Abingdon, OX14 3NB, United Kingdom
Phone: (44) (0) 1235 529449
Free Phone: 0800 37 34 15
Fax: (44) (0) 1235 533420
info.EMEA@bio-techne.com

General Contact Information

www.novusbio.com
Technical Support: nb-technical@bio-techne.com
Orders: nb-customerservice@bio-techne.com
General: novus@novusbio.com

Products Related to H00010055-M01

NBP2-33376H	Blue Marker Antibody (6F4-F6) [HRP]
HAF007	Goat anti-Mouse IgG Secondary Antibody [HRP]
NB7539	Goat anti-Mouse IgG (H+L) Secondary Antibody [HRP]
NBP1-96982	Mouse IgG1 Lambda Isotype Control (MG1L)

Limitations

This product is for research use only and is not approved for use in humans or in clinical diagnosis. Primary Antibodies are guaranteed for 1 year from date of receipt.

For more information on our 100% guarantee, please visit www.novusbio.com/guarantee

Earn gift cards/discounts by submitting a review: www.novusbio.com/reviews/submit/H00010055-M01

Earn gift cards/discounts by submitting a publication using this product:
www.novusbio.com/publications

