

Product Datasheet

Rev-erb A alpha/NR1D1 Antibody (4F6) - Azide and BSA Free H00009572-M02

Unit Size: 0.1 mg

Aliquot and store at -20C or -80C. Avoid freeze-thaw cycles.

www.novusbio.com



technical@novusbio.com

Reviews: 4 Publications: 6

Protocols, Publications, Related Products, Reviews, Research Tools and Images at:
www.novusbio.com/H00009572-M02

Updated 9/9/2025 v.20.1

Earn rewards for product reviews and publications.

Submit a publication at www.novusbio.com/publications

Submit a review at www.novusbio.com/reviews/destination/H00009572-M02



H00009572-M02

Rev-erb A alpha/NR1D1 Antibody (4F6) - Azide and BSA Free

Product Information	
Unit Size	0.1 mg
Concentration	Concentrations vary lot to lot. See vial label for concentration. If unlisted please contact technical services.
Storage	Aliquot and store at -20C or -80C. Avoid freeze-thaw cycles.
Clonality	Monoclonal
Clone	4F6
Preservative	No Preservative
Isotype	IgG1 Kappa
Purity	Protein A purified
Buffer	In 1x PBS, pH 7.4

Product Description	
Description	Novus Biologicals Mouse Rev-erb A alpha/NR1D1 Antibody (4F6) - Azide and BSA Free (H00009572-M02) is a monoclonal antibody validated for use in IHC, WB, ELISA, ICC/IF and CHIP. Anti-Rev-erb A alpha/NR1D1 Antibody: Cited in 5 publications. All Novus Biologicals antibodies are covered by our 100% guarantee.
Host	Mouse
Gene ID	9572
Gene Symbol	NR1D1
Species	Human, Mouse
Specificity/Sensitivity	NR1D1 (4F6)
Immunogen	NR1D1 (AAH56148, 1 a.a. ~ 614 a.a) full-length recombinant protein with GST tag. MW of the GST tag alone is 26 KDa. MTTLDSNNNTGGVITYIGSSGSSPSRTSPESLYSDNSNGSFQSLTQGCPTYFP PSPTGSLTQDPARSFGSIPPSLSDDGSPSSSSSSSSSSSSSYNGSPPGSLQVA MEDSSRVSPSKSTSNITKLNMGVLLCKVCGDVASGFHYGVHACEGCKGFFRR SIQQNIQYKRCLKNENCIVRINRNRCCQCRFKKCLSVGMSRDAVRFGRIPKRE KQRMLAEMQSAMNLANQLSSQCPLETSPTQHPTPGPMGSPPPAPVPSPLV GFSQFPQQLTPRSPSPEPTVEDVISQVARAHREIFTYAHDKLGSSPGNFNAN HASGSPATTTPHRWENQGCPPAPNDNNTLAAQRHNEALNGLRQAPSSYPPT WPPGPAHHSCHQSNSNGHRLCPTHVYAAPEGKAPANSRQGN SKNVLLACP MNMYPHGRSGRTVQEIWEDFMSFTPAVREVVFAKHIPGFRDLSQHDQVTL LKAGTFEVL MVRFASLFNVKDQTV MFLSRTTYSLQELGAMGMGDLLSAMD FDS EKLNSLALTEELGLFTAVVLVSADRSGMENSASVEQLQETLLRALRALVLKNR PLETSRFTKLLLKLPDLRTLNNMHSEKLLSFRVDAQ
Notes	This product is produced by and distributed for Abnova, a company based in Taiwan.

Product Application Details	
Applications	Western Blot, Immunohistochemistry-Paraffin, ELISA, Immunocytochemistry/ Immunofluorescence, Immunohistochemistry, Chromatin Immunoprecipitation (ChIP), Knockdown Validated
Recommended Dilutions	Western Blot 1:500, ELISA 1:100-1:2000, Immunohistochemistry 1:10-1:500, Immunocytochemistry/ Immunofluorescence 1:10-1:500, Immunohistochemistry-Paraffin 1:10-1:500, Chromatin Immunoprecipitation (ChIP), Knockdown Validated

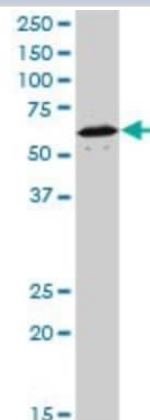


Application Notes

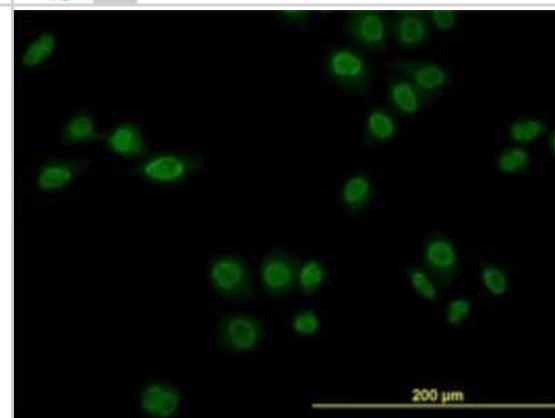
Antibody reactive against recominant protein and cell lysate for Western Blot. Has also been used for immunofluorescence, immunohistochemistry (paraffin), RNAi validation and ELISA.

Images

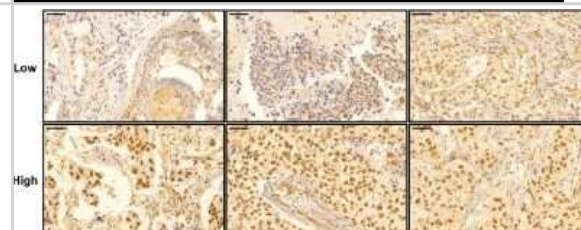
Western Blot: Rev-erb A alpha/NR1D1 Antibody (4F6) [H00009572-M02] - NR1D1 monoclonal antibody (M02), clone 4F6. Analysis of NR1D1 expression in NIH/3T3.



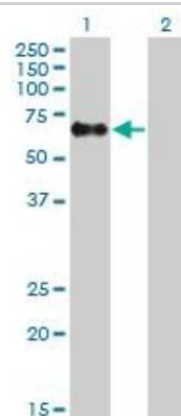
Immunocytochemistry/Immunofluorescence: Rev-erb A alpha/NR1D1 Antibody (4F6) [H00009572-M02] - Analysis of monoclonal antibody to NR1D1 on HeLa cell. Antibody concentration 10 ug/ml.



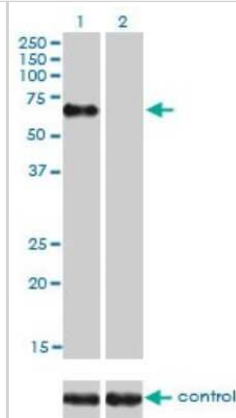
Immunohistochemistry-Paraffin: Rev-erb A alpha/NR1D1 Antibody (4F6) [H00009572-M02] - Representative tissue microarray specimens stained for NR1D1. Immunoreactivity of representative tumor specimens is shown. Low and high NR1D1 expression groups are defined in methods. The low NR1D1 expression ranges from immunoreactive scores 2 to 6 (left (P2x11), middle (P3x11), and right (P3x12)), and the high NR1D1 expression shows immunoreactive score 12 (all, P4x13). Image collected and cropped by CiteAb from the following publication (<https://breast-cancer-research.biomedcentral.com/articles/10.1186/s13058-019-1197-x>) licensed under a CC-BY license.



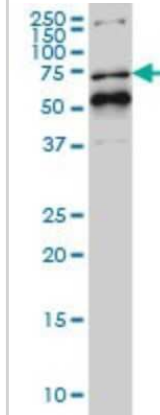
Western Blot: Rev-erb A alpha/NR1D1 Antibody (4F6) [H00009572-M02] - Analysis of NR1D1 expression in transfected 293T cell line by NR1D1 monoclonal antibody (M02), clone 4F6. Lane 1: NR1D1 transfected lysate (66.8 KDa). Lane 2: Non-transfected lysate.



Western Blot: Rev-erb A alpha/NR1D1 Antibody (4F6) [H00009572-M02]
 - Analysis of NR1D1 over-expressed 293 cell line, cotransfected with NR1D1 Validated Chimera RNAi (Cat # H00009572-R01V) (Lane 2) or non-transfected control (Lane 1). Blot probed with NR1D1 monoclonal antibody (M02), clone 4F6 (Cat # H00009572-M02). GAPDH (36.1 kDa) used as specificity and loading control.



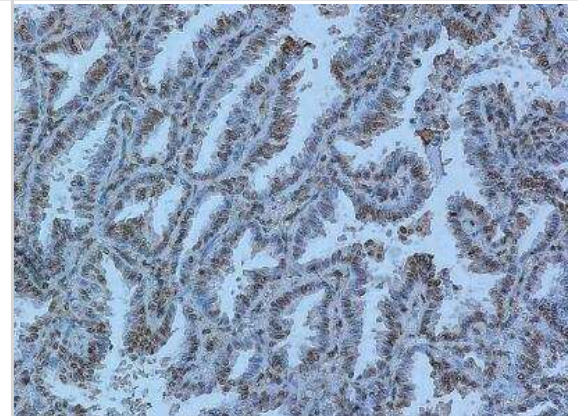
Western Blot: Rev-erb A alpha/NR1D1 Antibody (4F6) [H00009572-M02]
 - NR1D1 monoclonal antibody (M02), clone 4F6 Analysis of NR1D1 expression in Hela S3 NE.



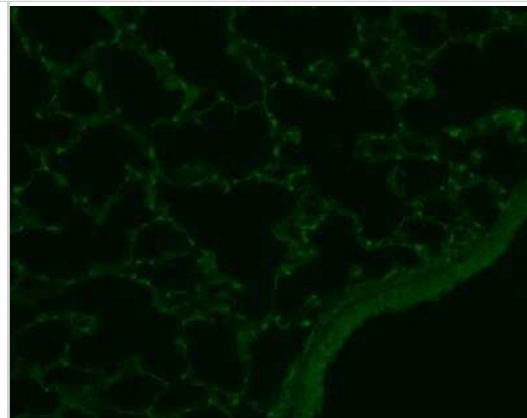
Immunohistochemistry-Paraffin: Rev-erb A alpha/NR1D1 Antibody (4F6) [H00009572-M02] - analysis of NR1D1 in paraffin embedded mouse lung tissue using anti-NR1D1 antibody. Image from verified customer review.



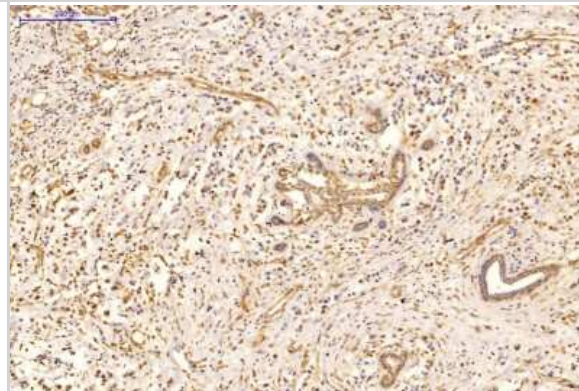
Immunohistochemistry-Paraffin: Rev-erb A alpha/NR1D1 Antibody (4F6) [H00009572-M02] - analysis of NR1D1 in paraffin embedded human lung cancer tissue using anti-NR1D1 antibody. Image from verified customer review.



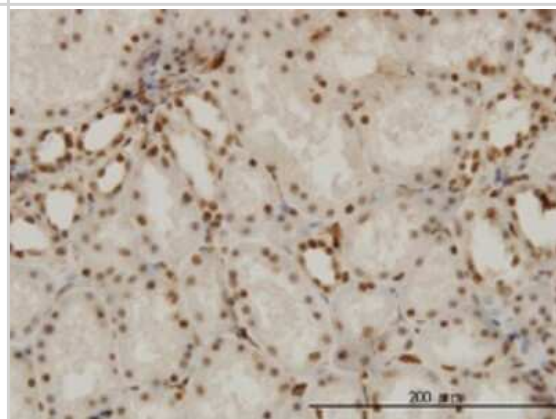
Immunohistochemistry-Paraffin: Rev-erb A alpha/NR1D1 Antibody (4F6) [H00009572-M02] - analysis of Rev-erb A alpha in paraffin embedded mouse lung sections using anti-Rev-erb A alpha antibody. Image from verified customer review.



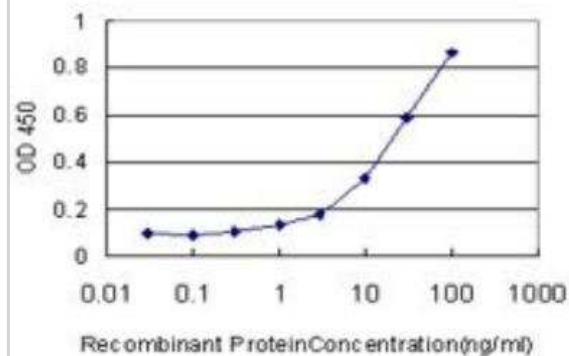
Immunohistochemistry-Paraffin: Rev-erb A alpha/NR1D1 Antibody (4F6) [H00009572-M02] - Staining on human breast cancer tissue. Image from verified customer review.



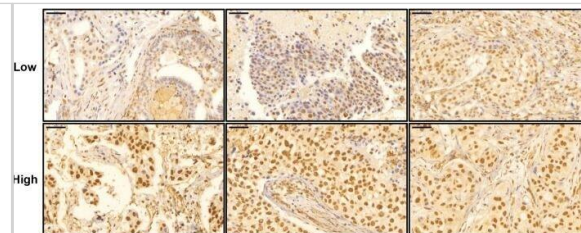
Immunohistochemistry-Paraffin: Rev-erb A alpha/NR1D1 Antibody (4F6) [H00009572-M02] - Analysis of monoclonal antibody to NR1D1 on formalin-fixed paraffin-embedded human kidney. Antibody concentration 3 ug/ml.



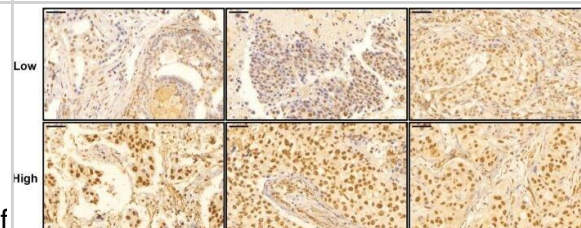
ELISA: Rev-erb A alpha/NR1D1 Antibody (4F6) [H00009572-M02] - Detection limit for recombinant GST tagged NR1D1 is approximately 1ng/ml as a capture antibody.



Representative tissue microarray specimens stained for NR1D1. Immunoreactivity of representative tumor specimens is shown. Low and high NR1D1 expression groups are defined in methods. The low NR1D1 expression ranges from immunoreactive scores 2 to 6 (left (P2x1), middle (P3x1), and right (P3x2)), and the high NR1D1 expression shows immunoreactive score 12 (all, P4x13). P, percentage of stained tumor cells; I, intensity of staining. Scale bar, 50 μ m



Immunohistochemistry: Rev-erb A alpha/NR1D1 Antibody (4F6) [H00009572-M02] - Representative tissue microarray specimens stained for NR1D1. Immunoreactivity of representative tumor specimens is shown. Low & high NR1D1 expression groups are defined in methods. The low NR1D1 expression ranges from immunoreactive scores 2 to 6 (left (P2x1), middle (P3x1), & right (P3x2)), & the high NR1D1 expression shows immunoreactive score 12 (all, P4x13). P, percentage of stained tumor cells; I, intensity of staining. Scale bar, 50 μ m Image collected & cropped by CiteAb from the following publication (<https://pubmed.ncbi.nlm.nih.gov/31779659>), licensed under a CC-BY license. Not internally tested by Novus Biologicals.



Publications

Shrestha, N. The Neural Basis of a Circadian Oscillator Underlying Time Memory Thesis 2021-01-01 (IF/IHC, Mouse)

Hong H, Cheung Ym, Cao X Et Al. REV-ERB alpha agonist SR9009 suppresses IL-1 beta production in macrophages through BMAL1-dependent inhibition of inflammasome Biochemical pharmacology 2021-07-26 [PMID: 34324866] (WB)

Na H, Han J, Ka NL et al. High expression of NR1D1 is associated with good prognosis in triple-negative breast cancer patients treated with chemotherapy Breast Cancer Res. 2019-11-28 [PMID: 31779659] (IHC-P, Human)

Bostrom J, Sramkova Z, Sala?ova A et al. Comparative cell cycle transcriptomics reveals synchronization of developmental transcription factor networks in cancer cells. PLoS One 2017-12-11 [PMID: 29228002]

Nakabayashi H, Ohta Y, Yamamoto M et al. Clock-controlled output gene Dbp is a regulator of Arnt/Hif-1b gene expression in pancreatic islet b-cells. Biochem Biophys Res Commun. 2013-04-06 [PMID: 23567972]

DeBruyne JP, Baggs JE, Sato TK, Hogenesch JB. Ubiquitin ligase Siah2 regulates RevErbalpha degradation and the mammalian circadian clock. Proc Natl Acad Sci U S A. 2015-09-21 [PMID: 26392558]



Novus Biologicals USA

10730 E. Briarwood Avenue
Centennial, CO 80112
USA
Phone: 303.730.1950
Toll Free: 1.888.506.6887
Fax: 303.730.1966
nb-customerservice@bio-techne.com

Bio-Techne Canada

21 Canmotor Ave
Toronto, ON M8Z 4E6
Canada
Phone: 905.827.6400
Toll Free: 855.668.8722
Fax: 905.827.6402
canada.inquires@bio-techne.com

Bio-Techne Ltd

19 Barton Lane
Abingdon Science Park
Abingdon, OX14 3NB, United Kingdom
Phone: (44) (0) 1235 529449
Free Phone: 0800 37 34 15
Fax: (44) (0) 1235 533420
info.EMEA@bio-techne.com

General Contact Information

www.novusbio.com
Technical Support: nb-technical@bio-techne.com
Orders: nb-customerservice@bio-techne.com
General: novus@novusbio.com

Products Related to H00009572-M02

NB800-PC9	HeLa Nuclear Cell Lysate
NBP2-33376H	Blue Marker Antibody (6F4-F6) [HRP]
HAF007	Goat anti-Mouse IgG Secondary Antibody [HRP]
NB7539	Goat anti-Mouse IgG (H+L) Secondary Antibody [HRP]
NBP1-43319-0.5mg	Mouse IgG1 Kappa Isotype Control (P3.6.2.8.1)

Limitations

This product is for research use only and is not approved for use in humans or in clinical diagnosis. Primary Antibodies are guaranteed for 1 year from date of receipt.

For more information on our 100% guarantee, please visit www.novusbio.com/guarantee

Earn gift cards/discounts by submitting a review: www.novusbio.com/reviews/submit/H00009572-M02

Earn gift cards/discounts by submitting a publication using this product:

www.novusbio.com/publications

