

Product Datasheet

Mitochondrial-processing peptidase subunit beta Antibody (3C3) - Azide and BSA Free H00009512-M01

Unit Size: 0.1 mg

Aliquot and store at -20C or -80C. Avoid freeze-thaw cycles.

www.novusbio.com



technical@novusbio.com

Protocols, Publications, Related Products, Reviews, Research Tools and Images at:
www.novusbio.com/H00009512-M01

Updated 9/9/2025 v.20.1

Earn rewards for product
reviews and publications.

Submit a publication at www.novusbio.com/publications

Submit a review at www.novusbio.com/reviews/destination/H00009512-M01



H00009512-M01**Mitochondrial-processing peptidase subunit beta Antibody (3C3) - Azide and BSA Free**

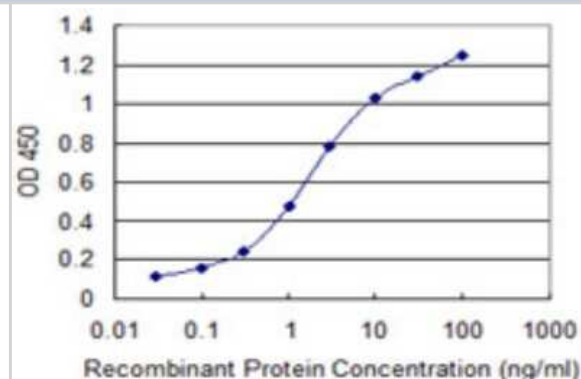
Product Information	
Unit Size	0.1 mg
Concentration	Concentrations vary lot to lot. See vial label for concentration. If unlisted please contact technical services.
Storage	Aliquot and store at -20C or -80C. Avoid freeze-thaw cycles.
Clonality	Monoclonal
Clone	3C3
Preservative	No Preservative
Isotype	IgG1 Kappa
Purity	Protein A purified
Buffer	In 1x PBS, pH 7.4

Product Description	
Description	Novus Biologicals Mouse Mitochondrial-processing peptidase subunit beta Antibody (3C3) - Azide and BSA Free (H00009512-M01) is a monoclonal antibody validated for use in ELISA. All Novus Biologicals antibodies are covered by our 100% guarantee.
Host	Mouse
Gene ID	9512
Gene Symbol	PMPCB
Species	Human
Specificity/Sensitivity	Reacts with peptidase (mitochondrial processing) beta.
Immunogen	PMPCB (NP_004270, 161 a.a. ~ 269 a.a) partial recombinant protein with GST tag. MW of the GST tag alone is 26 KDa. IQNSTLGEAEIERERGVILREMQEIVETNLQEVVFDYLDHATAYQNTALGRTILGPT ENIKSISRKDLVDYITTHYKGPRIVLAAAGGVSHDELDDLAKFHFGDSLCTHKG
Notes	This product is produced by and distributed for Abnova, a company based in Taiwan.

Product Application Details	
Applications	ELISA, Sandwich ELISA
Recommended Dilutions	ELISA, Sandwich ELISA
Application Notes	This antibody is reactive against recombinant protein in ELISA.

Images

Sandwich ELISA: Mitochondrial-processing peptidase subunit beta Antibody (3C3) [H00009512-M01] - Detection limit for recombinant GST tagged PMPCB is 0.03 ng/ml as a capture antibody.





Novus Biologicals USA

10730 E. Briarwood Avenue
Centennial, CO 80112
USA

Phone: 303.730.1950

Toll Free: 1.888.506.6887

Fax: 303.730.1966

nb-customerservice@bio-techne.com

Bio-Techne Canada

21 Canmotor Ave
Toronto, ON M8Z 4E6
Canada

Phone: 905.827.6400

Toll Free: 855.668.8722

Fax: 905.827.6402

canada.inquires@bio-techne.com

Bio-Techne Ltd

19 Barton Lane
Abingdon Science Park
Abingdon, OX14 3NB, United Kingdom

Phone: (44) (0) 1235 529449

Free Phone: 0800 37 34 15

Fax: (44) (0) 1235 533420

info.EMEA@bio-techne.com

General Contact Information

www.novusbio.com

Technical Support: nb-technical@bio-techne.com

Orders: nb-customerservice@bio-techne.com

General: novus@novusbio.com

Products Related to H00009512-M01

HAF007	Goat anti-Mouse IgG Secondary Antibody [HRP]
NB7539	Goat anti-Mouse IgG (H+L) Secondary Antibody [HRP]
NBP1-43319-0.5mg	Mouse IgG1 Kappa Isotype Control (P3.6.2.8.1)
H00009512-P01-10ug	Recombinant Human Mitochondrial-processing peptidase subunit beta GST (N-Term) Protein

Limitations

This product is for research use only and is not approved for use in humans or in clinical diagnosis. Primary Antibodies are guaranteed for 1 year from date of receipt.

For more information on our 100% guarantee, please visit www.novusbio.com/guarantee

Earn gift cards/discounts by submitting a review: www.novusbio.com/reviews/submit/H00009512-M01

Earn gift cards/discounts by submitting a publication using this product:
www.novusbio.com/publications



