

# Product Datasheet

## ENO3 Antibody (5D1) - Azide and BSA Free H00002027-M01

Unit Size: 0.1 mg

Aliquot and store at -20C or -80C. Avoid freeze-thaw cycles.

[www.novusbio.com](http://www.novusbio.com)



[technical@novusbio.com](mailto:technical@novusbio.com)

**Publications: 14**

Protocols, Publications, Related Products, Reviews, Research Tools and Images at:  
[www.novusbio.com/H00002027-M01](http://www.novusbio.com/H00002027-M01)

Updated 2/21/2025 v.20.1

**Earn rewards for product  
reviews and publications.**

Submit a publication at [www.novusbio.com/publications](http://www.novusbio.com/publications)

Submit a review at [www.novusbio.com/reviews/destination/H00002027-M01](http://www.novusbio.com/reviews/destination/H00002027-M01)



**H00002027-M01**

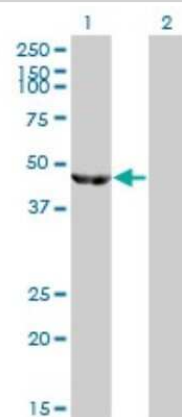
ENO3 Antibody (5D1) - Azide and BSA Free

Product Information	
<b>Unit Size</b>	0.1 mg
<b>Concentration</b>	Concentrations vary lot to lot. See vial label for concentration. If unlisted please contact technical services.
<b>Storage</b>	Aliquot and store at -20C or -80C. Avoid freeze-thaw cycles.
<b>Clonality</b>	Monoclonal
<b>Clone</b>	5D1
<b>Preservative</b>	No Preservative
<b>Isotype</b>	IgG2a Kappa
<b>Purity</b>	IgG purified
<b>Buffer</b>	In 1x PBS, pH 7.4
Product Description	
<b>Description</b>	Quality control test: Antibody Reactive Against Recombinant Protein.
<b>Host</b>	Mouse
<b>Gene ID</b>	2027
<b>Gene Symbol</b>	ENO3
<b>Species</b>	Human, Rat, Bovine
<b>Reactivity Notes</b>	Bovine reactivity reported in multiple pieces of scientific literature.
<b>Specificity/Sensitivity</b>	ENO3 - enolase 3 (beta, muscle)
<b>Immunogen</b>	ENO3 (NP_001967, 228 a.a. ~ 277 a.a) partial recombinant protein with GST tag. MW of the GST tag alone is 26 KDa. KTAIQAAGYPDKVVIGMDVAASEFYRNGKYDLDFKSPDDPARHITGEKLG
<b>Notes</b>	This product is produced by and distributed for Abnova, a company based in Taiwan.
Product Application Details	
<b>Applications</b>	Western Blot, Dot Blot, ELISA, Immunocytochemistry/ Immunofluorescence, Immunohistochemistry, Immunohistochemistry-Paraffin, Immunoprecipitation, Knockdown Validated
<b>Recommended Dilutions</b>	Western Blot 1:500, ELISA, Immunohistochemistry, Immunocytochemistry/ Immunofluorescence, Immunoprecipitation, Immunohistochemistry-Paraffin, Dot Blot, Knockdown Validated
<b>Application Notes</b>	Antibody reactivity against recominant protein and cell lysate for WB. It has been used for IF, IHC-P, RNAi Validation and ELISA. Use in Dot blot reported in scientific literature (PMID:26344128).

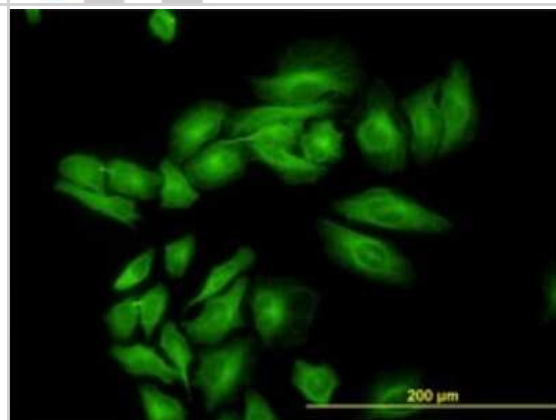


## Images

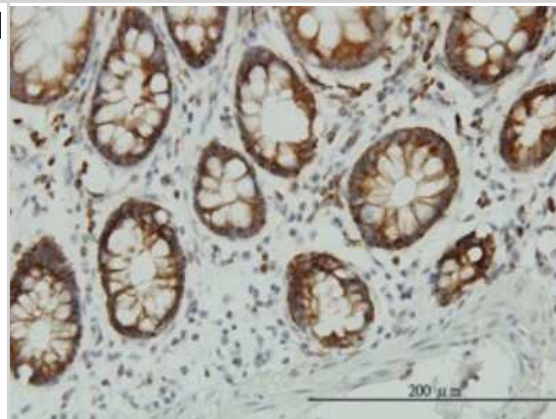
Western Blot: ENO3 Antibody (5D1) [H00002027-M01] - Analysis of ENO3 expression in transfected 293T cell line by ENO3 monoclonal antibody (M01), clone 5D1. Lane 1: ENO3 transfected lysate(46.9 KDa). Lane 2: Non-transfected lysate.



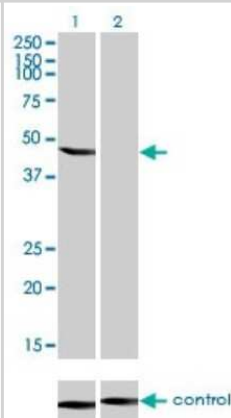
Immunocytochemistry/Immunofluorescence: ENO3 Antibody (5D1) [H00002027-M01] - Analysis of monoclonal antibody to ENO3 on HeLa cell. Antibody concentration 10 ug/ml.



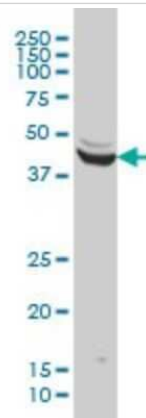
Immunohistochemistry-Paraffin: ENO3 Antibody (5D1) [H00002027-M01] - Analysis of monoclonal antibody to ENO3 on formalin-fixed paraffin-embedded human colon. Antibody concentration 3 ug/ml.



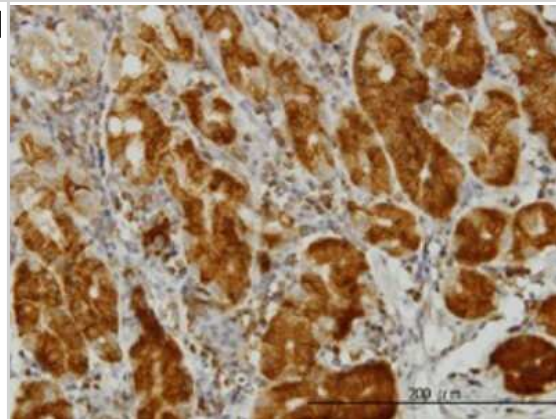
Western Blot: ENO3 Antibody (5D1) [H00002027-M01] - Analysis of ENO3 over-expressed 293 cell line, cotransfected with ENO3 Validated Chimera RNAi ( Cat # H00002027-R01V ) (Lane 2) or non-transfected control (Lane 1). Blot probed with ENO3 monoclonal antibody (M01), clone 5D1 (Cat # H00002027-M01 ). GAPDH ( 36.1 kDa ) used as specificity and loading control.



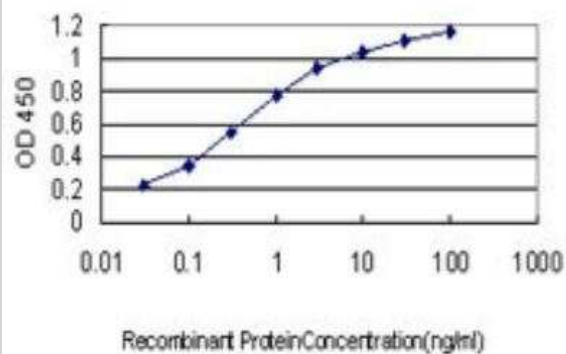
Western Blot: ENO3 Antibody (5D1) [H00002027-M01] - ENO3 monoclonal antibody (M01), clone 5D1 Analysis of ENO3 expression in HeLa.



Immunohistochemistry-Paraffin: ENO3 Antibody (5D1) [H00002027-M01] - Analysis of monoclonal antibody to ENO3 on formalin-fixed paraffin-embedded human stomach. Antibody concentration 1.5 ug/ml.



ELISA: ENO3 Antibody (5D1) [H00002027-M01] - Detection limit for recombinant GST tagged ENO3 is approximately 0.03ng/ml as a capture antibody.



## Publications

Huppertz I, Perez-Perri JI, Mantas P et al. Riboregulation of Enolase 1 activity controls glycolysis and embryonic stem cell differentiation *Molecular cell* 2022-06-10 [PMID: 35709751] (WB)

Picard B, Gagaoua M, Al Jammal M, Bonnet M et al. Beef tenderness and intramuscular fat proteomic biomarkers: Effect of gender and rearing practices. *J Proteomics*. 2019-03-17 [PMID: 30894324]

Picard B, Gagaoua M, Al-Jammal M et al. Beef tenderness and intramuscular fat proteomic biomarkers: muscle type effect. *PeerJ* 2018-06-07 [PMID: 29892502]

Gagaoua M, Bonnet M, Ellies-Oury MP et al. Reverse phase protein arrays for the identification/validation of biomarkers of beef texture and their use for early classification of carcasses. *Food Chem* 2018-01-10 [PMID: 29412918]

Gagaoua M, Bonnet M, De Koning L et al. Reverse Phase Protein array for the quantification and validation of protein biomarkers of beef qualities: The case of meat color from Charolais breed. *Meat Sci* 2018-07-05 [PMID: 30015160]

Yu Q, Wu W, Tian X et al. Unraveling proteome changes of Holstein beef M. semitendinosus and its relationship to meat discoloration during post-mortem storage analyzed by label-free mass spectrometry. *J Proteomics* 2016-12-28 [PMID: 28039026]

Chaze T, Meunier B, Chambon C et al. Proteome dynamics during contractile and metabolic differentiation of bovine foetal muscle. *Animal*. 2009-01-01 [PMID: 22444818]

Uys GM, Ramburan A, Loos B et al. Myomegalin is a novel A-kinase anchoring protein involved in the phosphorylation of cardiac myosin binding protein C. *BMC Cell Biol* 2011-05-10 [PMID: 21569246]

Guillemin N, Bonnet M, Jurie C et al. Functional analysis of beef tenderness. *J Proteomics* 2011-08-09 [PMID: 21855665]

Brocca L, Cannavino J, Coletto L et al. The time course of the adaptations of human muscle proteome to bed rest and the underlying mechanisms. *J Physiol*. 2012-07-30 [PMID: 22848045]

Picard B, Gagaoua M, Micol D et al. Inverse relationships between biomarkers and beef tenderness according to contractile and metabolic properties of the muscle. *J Agric Food Chem* 2014-08-24 [PMID: 25175407]

Brocca L, Longa E, Cannavino J et al. Human skeletal muscle fibre contractile properties and proteomic profile: Adaptations to 3-week unilateral lower limb suspension and active recovery. *J Physiol*. 2015-09-15 [PMID: 26369674]

More publications at <http://www.novusbio.com/H00002027-M01>



### **Novus Biologicals USA**

10730 E. Briarwood Avenue  
Centennial, CO 80112  
USA  
Phone: 303.730.1950  
Toll Free: 1.888.506.6887  
Fax: 303.730.1966  
nb-customerservice@bio-techne.com

### **Bio-Techne Canada**

21 Canmotor Ave  
Toronto, ON M8Z 4E6  
Canada  
Phone: 905.827.6400  
Toll Free: 855.668.8722  
Fax: 905.827.6402  
canada.inquires@bio-techne.com

### **Bio-Techne Ltd**

19 Barton Lane  
Abingdon Science Park  
Abingdon, OX14 3NB, United Kingdom  
Phone: (44) (0) 1235 529449  
Free Phone: 0800 37 34 15  
Fax: (44) (0) 1235 533420  
info.EMEA@bio-techne.com

### **General Contact Information**

www.novusbio.com  
Technical Support: nb-technical@bio-techne.com  
Orders: nb-customerservice@bio-techne.com  
General: novus@novusbio.com

### **Products Related to H00002027-M01**

---

HAF007	Goat anti-Mouse IgG Secondary Antibody [HRP]
NB720-B	Rabbit anti-Mouse IgG (H+L) Secondary Antibody [Biotin]
NBP1-96981-0.5mg	Mouse IgG2a Kappa Isotype Control (M2AK)
NBP1-72501-50ug	Recombinant Human ENO3 His Protein

---

### **Limitations**

This product is for research use only and is not approved for use in humans or in clinical diagnosis. Primary Antibodies are guaranteed for 1 year from date of receipt.

For more information on our 100% guarantee, please visit [www.novusbio.com/guarantee](http://www.novusbio.com/guarantee)

Earn gift cards/discounts by submitting a review: [www.novusbio.com/reviews/submit/H00002027-M01](http://www.novusbio.com/reviews/submit/H00002027-M01)

Earn gift cards/discounts by submitting a publication using this product:  
[www.novusbio.com/publications](http://www.novusbio.com/publications)

