

Product Datasheet

CREM Antibody (3B5) - Azide and BSA Free H00001390-M02

Unit Size: 0.1 mg

Aliquot and store at -20C or -80C. Avoid freeze-thaw cycles.

www.novusbio.com



technical@novusbio.com

Reviews: 2 Publications: 1

Protocols, Publications, Related Products, Reviews, Research Tools and Images at:
www.novusbio.com/H00001390-M02

Updated 8/14/2025 v.20.1

**Earn rewards for product
reviews and publications.**

Submit a publication at www.novusbio.com/publications

Submit a review at www.novusbio.com/reviews/destination/H00001390-M02



H00001390-M02

CREM Antibody (3B5) - Azide and BSA Free

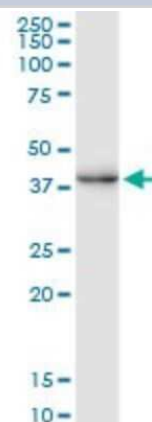
| Product Information | |
|---------------------|--|
| Unit Size | 0.1 mg |
| Concentration | Concentrations vary lot to lot. See vial label for concentration. If unlisted please contact technical services. |
| Storage | Aliquot and store at -20C or -80C. Avoid freeze-thaw cycles. |
| Clonality | Monoclonal |
| Clone | 3B5 |
| Preservative | No Preservative |
| Isotype | IgG1 Kappa |
| Purity | IgG purified |
| Buffer | In 1x PBS, pH 7.4 |

| Product Description | |
|-------------------------|--|
| Description | Quality control test: Antibody Reactive Against Recombinant Protein. |
| Host | Mouse |
| Gene ID | 1390 |
| Gene Symbol | CREM |
| Species | Human |
| Specificity/Sensitivity | CREM (3B5) |
| Immunogen | CREM (NP_853549, 201 a.a. ~ 300 a.a) partial recombinant protein with GST tag. MW of the GST tag alone is 26 KDa. ATGDMPTYQIRAPTAALPQGVVMAASPGSLHSPQQLAEEATRKRRLMKNR EAAKECRRRKKEYVKCLESRVAVLEVQNKKLIEELETLDICSPKTDY |
| Notes | This product is produced by and distributed for Abnova, a company based in Taiwan. |

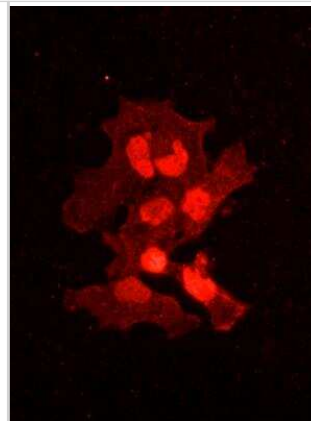
| Product Application Details | |
|-----------------------------|--|
| Applications | Western Blot, ELISA, Immunocytochemistry/ Immunofluorescence, Sandwich ELISA, Knockdown Validated |
| Recommended Dilutions | Western Blot 1:500, ELISA, Immunocytochemistry/ Immunofluorescence, Sandwich ELISA, Knockdown Validated |
| Application Notes | Antibody reactivity against Recombinant Protein with GST tag on ELISA and WB. GST tag alone is used as a negative control. |

Images

Western Blot: CREM Antibody (3B5) [H00001390-M02] - CREM monoclonal antibody (M02), clone 3B5. Analysis of CREM expression in human liver.



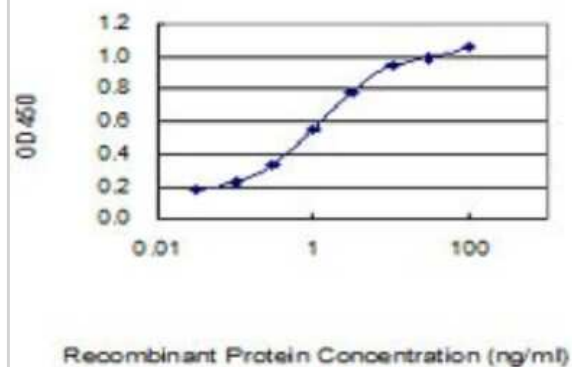
Immunocytochemistry/Immunofluorescence: CREM Antibody (3B5) [H00001390-M02] - UTGB1, primary glioblastoma cell line, expressing the EWSR1-CREM fusion, stained using CREM antibody at 1:200. Secondary Antibody: Alexa Fluor 568 conjugate. Image from verified customer review.



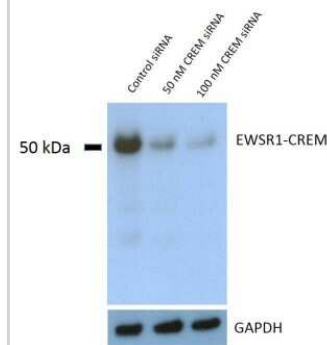
Immunocytochemistry/Immunofluorescence: CREM Antibody (3B5) [H00001390-M02] - Analysis of monoclonal antibody to CREM on HeLa cell . Antibody concentration 10 ug/ml.



Sandwich ELISA: CREM Antibody (3B5) [H00001390-M02] - Detection limit for recombinant GST tagged CREM is 0.03 ng/ml as a capture antibody.



Western Blot: CREM Antibody (3B5) [H00001390-M02] - UTGB1, primary glioblastoma cell line, expressing the EWSR1-CREM fusion, treated with non-target siRNA and different concentrations of CREM siRNA. Image from verified customer review.



Publications

David K, Isis P Dual regulation of miR-375 and CREM genes in pancreatic beta cells. *Islets*. 2022-04-04 [PMID: 35377267]



Novus Biologicals USA

10730 E. Briarwood Avenue
Centennial, CO 80112
USA
Phone: 303.730.1950
Toll Free: 1.888.506.6887
Fax: 303.730.1966
nb-customerservice@bio-techne.com

Bio-Techne Canada

21 Canmotor Ave
Toronto, ON M8Z 4E6
Canada
Phone: 905.827.6400
Toll Free: 855.668.8722
Fax: 905.827.6402
canada.inquires@bio-techne.com

Bio-Techne Ltd

19 Barton Lane
Abingdon Science Park
Abingdon, OX14 3NB, United Kingdom
Phone: (44) (0) 1235 529449
Free Phone: 0800 37 34 15
Fax: (44) (0) 1235 533420
info.EMEA@bio-techne.com

General Contact Information

www.novusbio.com
Technical Support: nb-technical@bio-techne.com
Orders: nb-customerservice@bio-techne.com
General: novus@novusbio.com

Products Related to H00001390-M02

| | |
|--------------------|---|
| HAF007 | Goat anti-Mouse IgG Secondary Antibody [HRP] |
| NB720-B | Rabbit anti-Mouse IgG (H+L) Secondary Antibody [Biotin] |
| NBP1-43319-0.5mg | Mouse IgG1 Kappa Isotype Control (P3.6.2.8.1) |
| H00001390-P01-10ug | Recombinant Human CREM GST (N-Term) Protein |

Limitations

This product is for research use only and is not approved for use in humans or in clinical diagnosis. Primary Antibodies are guaranteed for 1 year from date of receipt.

For more information on our 100% guarantee, please visit www.novusbio.com/guarantee

Earn gift cards/discounts by submitting a review: www.novusbio.com/reviews/submit/H00001390-M02

Earn gift cards/discounts by submitting a publication using this product:
www.novusbio.com/publications

