

# Product Datasheet

## VE-Cadherin Antibody (123413) [PE] FAB9381P-0.1ml

Unit Size: 0.1 ml

Store at 4C in the dark.

[www.novusbio.com](http://www.novusbio.com)



[technical@novusbio.com](mailto:technical@novusbio.com)

**Publications: 13**

Protocols, Publications, Related Products, Reviews, Research Tools and Images at:  
[www.novusbio.com/FAB9381P](http://www.novusbio.com/FAB9381P)

Updated 1/28/2026 v.20.1

Earn rewards for product  
reviews and publications.

Submit a publication at [www.novusbio.com/publications](http://www.novusbio.com/publications)

Submit a review at [www.novusbio.com/reviews/destination/FAB9381P](http://www.novusbio.com/reviews/destination/FAB9381P)



**FAB9381P-0.1ml**

VE-Cadherin Antibody (123413) [PE]

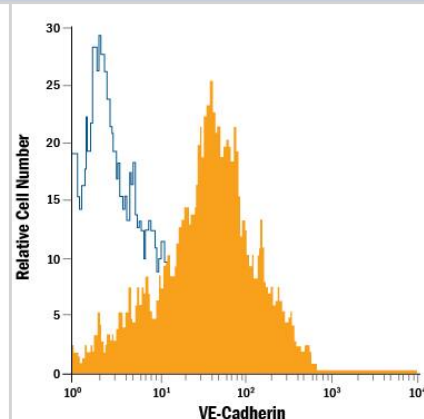
Product Information	
Unit Size	0.1 ml
Concentration	Please see the vial label for concentration. If unlisted please contact technical services.
Storage	Store at 4C in the dark.
Clonality	Monoclonal
Clone	123413
Preservative	0.05% Sodium Azide
Isotype	IgG2b
Conjugate	PE
Purity	Protein A or G purified from hybridoma culture supernatant
Buffer	PBS

Product Description	
Host	Mouse
Gene ID	1003
Gene Symbol	CDH5
Species	Human
Specificity/Sensitivity	Detects human VE-Cadherin in Western blots. In Western blots, 25% cross-reactivity with recombinant mouse VE-Cadherin and no cross-reactivity with recombinant human (rh) Cadherin-17 or rhP-Cadherin is observed.
Immunogen	Mouse myeloma cell line NS0-derived recombinant human VE-Cadherin Asp48-Gln593 Accession # P33151

Product Application Details	
Applications	Flow Cytometry
Recommended Dilutions	Flow Cytometry 10 uL/10 <sup>6</sup> cells
Application Notes	Optimal dilution of this antibody should be experimentally determined.

**Images**

HUVEC human umbilical vein endothelial cells were stained with Mouse Anti-Human VE-Cadherin PE-conjugated Monoclonal Antibody (Catalog # FAB9381P, filled histogram) or isotype control antibody (Catalog # IC0041P, open histogram). Cells were stained in a buffer containing Ca<sup>2+</sup> and Mg<sup>2+</sup>. View our protocol for [Staining Membrane-associated Proteins](#).



## Publications

Jia, H;Moore, M;Wadhwa, M;Burns, C; Human iPSC-Derived Endothelial Cells Exhibit Reduced Immunogenicity in Comparison With Human Primary Endothelial Cells Stem cells international 2024-12-09 [PMID: 39687754] (Flow Cytometry, Human)

Lan Huang Somatic GNAQ Mutation is Enriched in Brain Endothelial Cells in  $\frac{1}{2}$ Sturge-Weber Syndrome *Pediatr. Neurol.*, 2016-10-21;0(0):. 2016-10-21 [PMID: 27919468] (Flow Cytometry, Human)

Porat Y, Porozov S, Belkin D, Shimoni D, Fisher Y, Belleli A, Czeiger D, Silverman WF, Belkin M, Battler A, Fulga V, Savion N Isolation of an adult blood-derived progenitor cell population capable of differentiation into angiogenic, myocardial and neural lineages. *Br. J. Haematol.*, 2006-12-01;135(5):703-14. 2006-12-01 [PMID: 17052254] (Flow Cytometry, Human)

S Masuda, K Matsuura, T Shimizu Preparation of iPS cell-derived CD31+ endothelial cells using three-dimensional suspension culture *Regen Ther.*, 2018-07-07;9(0):1-9. 2018-07-07 [PMID: 30525069] (ICC, Human)

White M, Rufaihah A, Liu L, Ghebremariam Y, Ivey K, Cooke J, Srivastava D Limited gene expression variation in human embryonic stem cell and induced pluripotent stem cell-derived endothelial cells. *Stem Cells*, 2013-01-01;31(1):92-103. 2013-01-01 [PMID: 23079999] (Flow Cytometry, ICC, Human)

Ricci-Vitiani L, Pallini R, Biffoni M, Todaro M, Invernici G, Cenci T, Maira G, Parati EA, Stassi G, Larocca LM, De Maria R Tumour vascularization via endothelial differentiation of glioblastoma stem-like cells. *Nature*, 2010-11-21;468(7325):824-8. 2010-11-21 [PMID: 21102434] (Flow Cytometry, Human)

C Maroun-Eid, A Ortega-Her, J Modrego, M Abad-Cardi, JA García-Don, L Reinares, N Martell-CI, D Gómez-Garr Effect of intensive multifactorial treatment on vascular progenitor cells in hypertensive patients *PLoS ONE*, 2018-01-05;13(1):e0190494. 2018-01-05 [PMID: 29304136] (Flow Cytometry, Human)

Pelosi E, Castelli G, Martin-Padura I, Bordoni V, Santoro S, Conigliaro A, Cerio A, De Santis Puzzonina M, Marighetti P, Biffoni M, Alonzi T, Amicone L, Alcalay M, Bertolini F, Testa U, Tripodi M Human haemato-endothelial precursors: cord blood CD34+ cells produce haemogenic endothelium. *PLoS ONE*, 2012-12-04;7(12):e51109. 2012-12-04 [PMID: 23226561] (Flow Cytometry, Human)

Huang L, Nakayama H, Klagsbrun M, Mulliken J, Bischoff J Glucose transporter 1-positive endothelial cells in infantile hemangioma exhibit features of facultative stem cells. *Stem Cells*, 2015-01-01;33(1):133-45. 2015-01-01 [PMID: 25187207] (Flow Cytometry, Human)

Pigott R, Needham LA, Edwards RM Structural and functional studies of the endothelial activation antigen endothelial leucocyte adhesion molecule-1 using a panel of monoclonal antibodies. *J. Immunol.*, 1991-07-01;147(1):130-5. 1991-07-01 [PMID: 1711068] (Flow Cytometry, Human)

J Kelleher, A Dickinson, S Cain, Y Hu, N Bates, A Harvey, J Ren, W Zhang, FC Moreton, KW Muir, C Ward, RM Touyz, P Sharma, Q Xu, SJ Kimber, T Wang Patient-Specific iPSC Model of a Genetic Vascular Dementia Syndrome Reveals Failure of Mural Cells to Stabilize Capillary Structures *Stem Cell Reports*, 2019-10-31;13(5):817-831. 2019-10-31 [PMID: 31680059] (Flow Cytometry, Human)

Narazaki M, Segarra M, Tosato G Sulfated polysaccharides identified as inducers of neuropilin-1 internalization and functional inhibition of VEGF165 and semaphorin3A. *Blood*, 2008-02-13;111(8):4126-36. 2008-02-13 [PMID: 18272814] (Flow Cytometry, Human)

More publications at <http://www.novusbio.com/FAB9381P>



### **Novus Biologicals USA**

10730 E. Briarwood Avenue  
Centennial, CO 80112  
USA  
Phone: 303.730.1950  
Toll Free: 1.888.506.6887  
Fax: 303.730.1966  
nb-customerservice@bio-techne.com

### **Bio-Techne Canada**

21 Canmotor Ave  
Toronto, ON M8Z 4E6  
Canada  
Phone: 905.827.6400  
Toll Free: 855.668.8722  
Fax: 905.827.6402  
canada.inquires@bio-techne.com

### **Bio-Techne Ltd**

19 Barton Lane  
Abingdon Science Park  
Abingdon, OX14 3NB, United Kingdom  
Phone: (44) (0) 1235 529449  
Free Phone: 0800 37 34 15  
Fax: (44) (0) 1235 533420  
info.EMEA@bio-techne.com

### **General Contact Information**

www.novusbio.com  
Technical Support: nb-technical@bio-  
techne.com  
Orders: nb-customerservice@bio-techne.com  
General: novus@novusbio.com

### **Limitations**

This product is for research use only and is not approved for use in humans or in clinical diagnosis. Primary Antibodies are guaranteed for 1 year from date of receipt.

For more information on our 100% guarantee, please visit [www.novusbio.com/guarantee](http://www.novusbio.com/guarantee)

Earn gift cards/discounts by submitting a review: [www.novusbio.com/reviews/submit/FAB9381P](http://www.novusbio.com/reviews/submit/FAB9381P)

Earn gift cards/discounts by submitting a publication using this product:  
[www.novusbio.com/publications](http://www.novusbio.com/publications)

