

Certificate of Analysis

www.tocris.com

Product Name: SAHM1

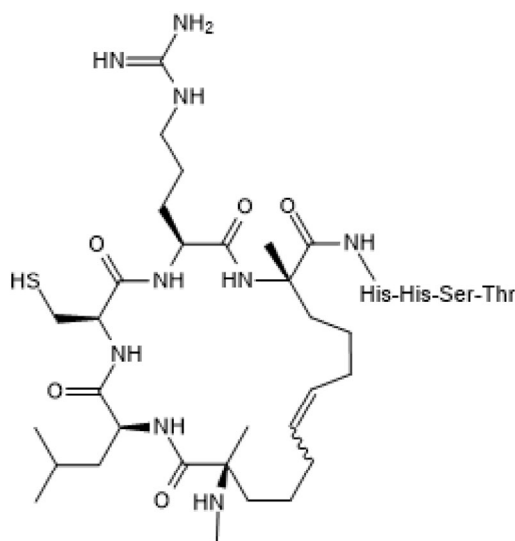
Catalog No.: 6477

Batch No.: 4

CAS Number: 2050906-89-1

1. PHYSICAL AND CHEMICAL PROPERTIES

Batch Molecular Formula: C₉₄H₁₆₂N₃₆O₂₃S
Batch Molecular Weight: 2196.58
Physical Appearance: White lyophilised solid
Counter Ion: TFA
Solubility: Soluble to 1 mg/ml in water
Storage: Store at -20°C
Peptide Sequence:



Ac-β-Ala-Glu-Arg-Leu-Arg-Arg-Arg-Ile

2. ANALYTICAL DATA

HPLC: Shows 92.3% purity
Mass Spectrum: Consistent with structure

Caution - Not Fully Tested • Research Use Only • Not For Human or Veterinary Use

bio-techne.com
info@bio-techne.com
techsupport@bio-techne.com

North America
 Tel: (800) 343 7475

China
info.cn@bio-techne.com
 Tel: +86 (21) 52380373

Europe Middle East Africa
 Tel: +44 (0)1235 529449

Rest of World
www.tocris.com/distributors
 Tel: +1 612 379 2956

Product Name: SAHM1

Catalog No.: 6477

Batch No.: 4

CAS Number: 2050906-89-1

Description:

SAHM1 is a notch pathway inhibitor - stabilized hydrocarbon-stapled alpha helical peptide. Targets the protein-protein interface and prevents Notch complex assembly.

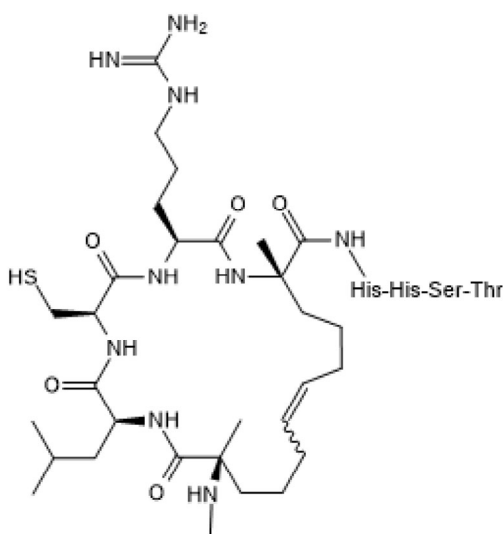
Physical and Chemical Properties:

Batch Molecular Formula: C₉₄H₁₆₂N₃₆O₂₃S

Batch Molecular Weight: 2196.58

Physical Appearance: White lyophilised solid

Peptide Sequence:



Ac-β-Ala-Glu-Arg-Leu-Arg-Arg-Ile

Storage: Store at -20°C

Solubility & Usage Info:

Soluble to 1 mg/ml in water

This product is supplied in lyophilized form. It may appear as a solid, gel or film and be very hard to visualize. Solutions should be made by adding solvent directly to the vial. The vial should then be vortexed vigorously to ensure the product has completely dissolved.

Counter Ion: TFA

Stability and Solubility Advice:

Some solutions can be difficult to obtain and can be encouraged by rapid stirring, sonication or gentle warming (in a 45-60°C water bath).

Peptides in solution are much less stable than in lyophilized form. This is especially true for peptides whose sequences contain amino acids such as Cys, Met, Trp, Asn, Gln, and N-terminal Glu.

Therefore we recommend storing peptides in solution for as short a time as possible. Avoid repeated freeze thaw cycles by dividing the peptide solution into aliquots and storing the aliquots at -20°C. Any portion of an aliquot unused after thawing should be discarded.

Peptides stored in solution can occasionally be susceptible to bacterial degradation. We recommend using sterile solutions or passing the peptide solution through a 0.2 µm filter to remove potential bacterial contamination whenever possible.

References:

Bagheri et al (2018) Notch pathway is active during osteogenic differentiation of human bone marrow mesenchymal stem cells induced by pulsed electromagnetic fields. *J.Tissue Eng.Regen.Med.* **12** 304. PMID: 28482141.

KleinJan et al (2018) The Notch pathway inhibitor stapled α-helical peptide derived from mastermind-like 1 (SAHM1) abrogates the hallmarks of allergic asthma. *J.Allergy Clin.Immunol.* **142** 76. PMID: 29111218.

Ashley et al (2015) Notch signaling promotes osteoclast maturation and resorptive activity. *J Cell Biochem* **116** 2598. PMID: 25914241.

Caution - Not Fully Tested • Research Use Only • Not For Human or Veterinary Use

bio-techne.com

info@bio-techne.com

techsupport@bio-techne.com

North America

Tel: (800) 343 7475

China

info.cn@bio-techne.com

Tel: +86 (21) 52380373

Europe Middle East Africa

Tel: +44 (0)1235 529449

Rest of World

www.tocris.com/distributors

Tel: +1 612 379 2956