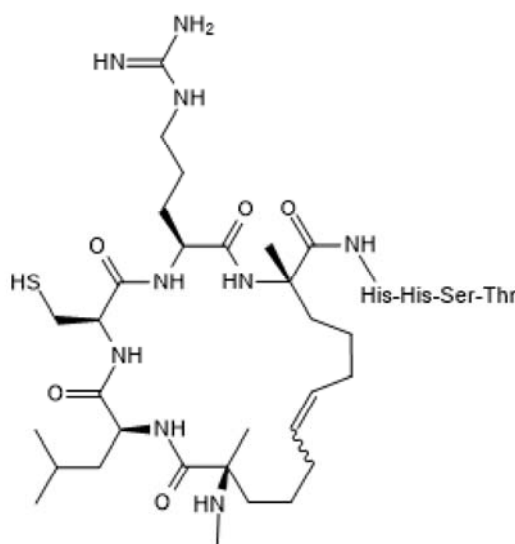


**Product Name:** SAHM1  
CAS Number: 2050906-89-1

**Catalog No.:** 6477 **Batch No.:** 1

**1. PHYSICAL AND CHEMICAL PROPERTIES**

**Batch Molecular Formula:** C<sub>94</sub>H<sub>162</sub>N<sub>36</sub>O<sub>23</sub>S  
**Batch Molecular Weight:** 2196.58  
**Physical Appearance:** White lyophilised solid  
**Net Peptide Content:** 70.1%  
**Counter Ion:** TFA  
**Solubility:** Soluble to 1 mg/ml in water  
**Storage:** Store at -20°C  
**Peptide Sequence:**



Ac-β-Ala-Glu-Arg-Leu-Arg-Arg-Arg-Ile

**2. ANALYTICAL DATA**

**HPLC:** Shows 95.5% purity  
**Mass Spectrum:** Consistent with structure

Caution - Not Fully Tested • Research Use Only • Not For Human or Veterinary Use

**Product Name:** SAHM1

**Catalog No.:** 6477

**Batch No.:** 1

CAS Number: 2050906-89-1

**Description:**

Notch pathway inhibitor - stabilized hydrocarbon-stapled alpha helical peptide. Targets the protein-protein interface and prevents Notch complex assembly.

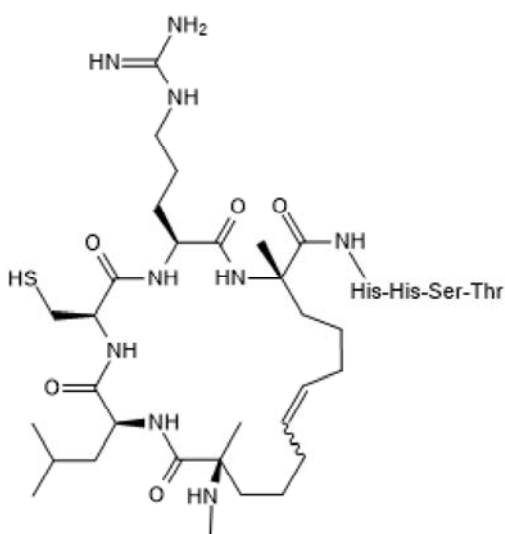
**Physical and Chemical Properties:**

Batch Molecular Formula: C<sub>94</sub>H<sub>162</sub>N<sub>36</sub>O<sub>23</sub>S

Batch Molecular Weight: 2196.58

Physical Appearance: White lyophilised solid

**Peptide Sequence:**



**Storage:** Store at -20°C

**Solubility & Usage Info:**

Soluble to 1 mg/ml in water

This product is supplied as a lyophilized solid and may be very hard to visualize. Solutions should be made by adding solvent directly to the vial. The vial should then be vortexed vigorously to ensure the product has completely dissolved.

**Net Peptide Content:** 70.1% (Remaining weight made up of counterions and residual water).

**Counter Ion:** TFA

**Stability and Solubility Advice:**

Some solutions can be difficult to obtain and can be encouraged by rapid stirring, sonication or gentle warming (in a 45-60°C water bath).

Peptides in solution are much less stable than in lyophilized form. This is especially true for peptides whose sequences contain amino acids such as Cys, Met, Trp, Asn, Gln, and N-terminal Glu.

Therefore we recommend storing peptides in solution for as short a time as possible. Avoid repeated freeze thaw cycles by dividing the peptide solution into aliquots and storing the aliquots at -20°C. Any portion of an aliquot unused after thawing should be discarded.

Peptides stored in solution can occasionally be susceptible to bacterial degradation. We recommend using sterile solutions or passing the peptide solution through a 0.2 µm filter to remove potential bacterial contamination whenever possible.

**References:**

**Bagheri et al (2018)** Notch pathway is active during osteogenic differentiation of human bone marrow mesenchymal stem cells induced by pulsed electromagnetic fields. *J.Tissue Eng.Regen.Med.* **12** 304. PMID: 28482141.

**KleinJan et al (2018)** The Notch pathway inhibitor stapled α-helical peptide derived from mastermind-like 1 (SAHM1) abrogates the hallmarks of allergic asthma. *J.Allergy Clin.Immunol.* **142** 76. PMID: 29111218.

**Ashley et al (2015)** Notch signaling promotes osteoclast maturation and resorptive activity. *J Cell Biochem* **116** 2598. PMID: 25914241.

Caution - Not Fully Tested • Research Use Only • Not For Human or Veterinary Use

**bio-techne.com**

info@bio-techne.com

techsupport@bio-techne.com

**North America**

Tel: (800) 343 7475

**China**

info.cn@bio-techne.com

Tel: +86 (21) 52380373

**Europe Middle East Africa**

Tel: +44 (0)1235 529449

**Rest of World**

www.tocris.com/distributors

Tel:+1 612 379 2956