

Product Name: TAPI 2

Catalog No.: 6013

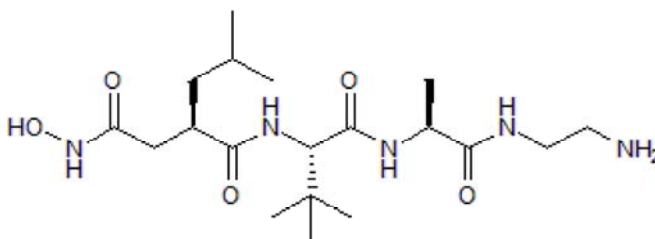
Batch No.: 5

CAS Number: 689284-12-6

IUPAC Name: *N*-[(2*R*)-2-[2-(Hydroxyamino)-2-oxoethyl]-4-methyl-1-oxopentyl]-3-methyl-L-valyl-*N*-(2-aminoethyl)-L-alaninamide

1. PHYSICAL AND CHEMICAL PROPERTIES

Batch Molecular Formula: C₁₉H₃₇N₅O₅
Batch Molecular Weight: 415.54
Physical Appearance: lyophilised solid
Net Peptide Content: 59%
Counter Ion: Acetate
Storage: Store at -20°C
Peptide Sequence:



2. ANALYTICAL DATA

HPLC: Shows 97.1% purity
Mass Spectrum: Consistent with structure

3. AMINO ACID ANALYSIS DATA

Amino Acid	Theoretical	Actual	Amino Acid	Theoretical	Actual
Ala	1.00	1.00	Lys		
Arg			Met		
Asx			Phe		
Cys			Pro		
Glx			Ser		
Gly			Thr		
His			Trp		
Ile			Tyr		
Leu			Val		

Caution - Not Fully Tested • Research Use Only • Not For Human or Veterinary Use

bio-techne.com

info@bio-techne.com

techsupport@bio-techne.com

North America

Tel: (800) 343 7475

China

info.cn@bio-techne.com

Tel: +86 (21) 52380373

Europe Middle East Africa

Tel: +44 (0)1235 529449

Rest of World

www.tocris.com/distributors

Tel: +1 612 379 2956

Product Name: TAPI 2

Catalog No.: 6013

Batch No.: 5

CAS Number: 689284-12-6

IUPAC Name: N-[(2R)-2-[2-(Hydroxyamino)-2-oxoethyl]-4-methyl-1-oxopentyl]-3-methyl-L-valyl-N-(2-aminoethyl)-L-alaninamide

Description:

TAPI 2 is an ADAM-17 (TACE) and MMP inhibitor ($K_i = 120$ nM at ADAM-17). Sensitizes cancer stem cells to the lethal effects of 5-FU in vitro. Blocks shedding of TNF- α from cell membranes. This product is typically reconstituted in water.

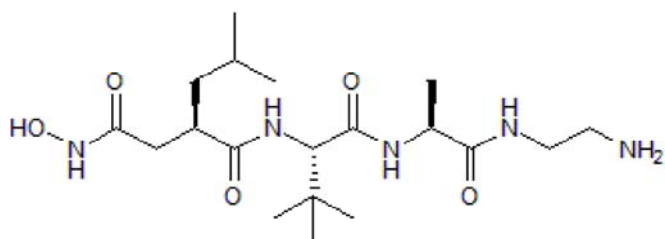
Physical and Chemical Properties:

Batch Molecular Formula: C₁₉H₃₇N₅O₅

Batch Molecular Weight: 415.54

Physical Appearance: lyophilised solid

Peptide Sequence:



Storage: Store at -20°C

Solubility & Usage Info:

Most peptides are soluble in distilled water. If the peptide does not completely dissolve addition of 0.1M acetic acid (those containing Arg, Lys, His) or 0.1M ammonia (those containing Asp, Glu) may help. Occasionally 10% DMSO or DMF may be required for extremely insoluble peptides. In addition to these measures sonification may also be helpful.

This product is supplied as a lyophilized solid and may be very hard to visualize. Solutions should be made by adding solvent directly to the vial. The vial should then be vortexed vigorously to ensure the product has completely dissolved. This product is supplied in gross weight.

Net Peptide Content: 59% (Remaining weight made up of counterions and residual water).

Counter Ion: Acetate

Stability and Solubility Advice:

Some solutions can be difficult to obtain and can be encouraged by rapid stirring, sonication or gentle warming (in a 45-60°C water bath).

Peptides in solution are much less stable than in lyophilized form. This is especially true for peptides whose sequences contain amino acids such as Cys, Met, Trp, Asn, Gln, and N-terminal Glu.

Therefore we recommend storing peptides in solution for as short a time as possible. Avoid repeated freeze thaw cycles by dividing the peptide solution into aliquots and storing the aliquots at -20°C. Any portion of an aliquot unused after thawing should be discarded.

Peptides stored in solution can occasionally be susceptible to bacterial degradation. We recommend using sterile solutions or passing the peptide solution through a 0.2 µm filter to remove potential bacterial contamination whenever possible.

References:

Wang et al (2016) A disintegrin and metalloproteinase domain 17 regulates colorectal cancer stem cells and chemosensitivity via notch1 signaling. *Stem Cells Transl. Med.* **5** 331. PMID: 26744411.

Moss et al (2007) Fluorescent substrates for the proteinases ADAM17, ADAM10, ADAM8, and ADAM12 useful for high-throughput inhibitor screening. *Anal. Biochem.* **366** 144. PMID: 17548045.

Caution - Not Fully Tested • Research Use Only • Not For Human or Veterinary Use

bio-techne.com

info@bio-techne.com

techsupport@bio-techne.com

North America

Tel: (800) 343 7475

China

info.cn@bio-techne.com

Tel: +86 (21) 52380373

Europe Middle East Africa

Tel: +44 (0)1235 529449

Rest of World

www.tocris.com/distributors

Tel: +1 612 379 2956