

**Product Name:** (R)-Citalopram oxalate

**Catalog No.:** 5763

**Batch No.:** 1

CAS Number: 219861-53-7

IUPAC Name: (-)-(R)-1-[3-(Dimethylamino)propyl]-1-(4-fluorophenyl)-1,3-dihydro-5-isobenzofurancarbonitrile oxalate

## 1. PHYSICAL AND CHEMICAL PROPERTIES

**Batch Molecular Formula:** C<sub>20</sub>H<sub>21</sub>FN<sub>2</sub>O.C<sub>2</sub>H<sub>2</sub>O<sub>4</sub>

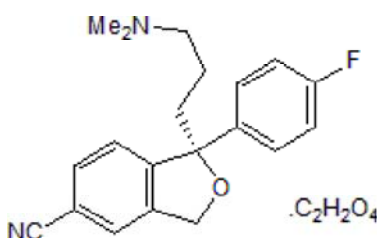
**Batch Molecular Weight:** 414.43

**Physical Appearance:** White solid

**Solubility:** water to 50 mM  
DMSO to 100 mM

**Storage:** Store at +4°C

**Batch Molecular Structure:**



## 2. ANALYTICAL DATA

**HPLC:** Shows 99.7% purity

**Chiral HPLC:** Shows 100% purity

**<sup>1</sup>H NMR:** Consistent with structure

**Mass Spectrum:** Consistent with structure

**Optical Rotation:** [α]<sub>D</sub> = -13.6 (Concentration = 2, Solvent = Methanol)

**Microanalysis:**

	Carbon	Hydrogen	Nitrogen
Theoretical	63.76	5.59	6.76
Found	63.88	5.7	6.79

Caution - Not Fully Tested • Research Use Only • Not For Human or Veterinary Use

**bio-techne.com**

info@bio-techne.com

techsupport@bio-techne.com

**North America**

Tel: (800) 343 7475

**China**

info.cn@bio-techne.com

Tel: +86 (21) 52380373

**Europe Middle East Africa**

Tel: +44 (0)1235 529449

**Rest of World**

[www.tocris.com/distributors](http://www.tocris.com/distributors)

Tel: +1 612 379 2956

**Product Name:** (R)-Citalopram oxalate

**Catalog No.:** 5763

**Batch No.:** 1

CAS Number: 219861-53-7

IUPAC Name: (-)-(R)-1-[3-(Dimethylamino)propyl]-1-(4-fluorophenyl)-1,3-dihydro-5-isobenzofurancarbonitrile oxalate

**Description:**

Enantiomer of escitalopram oxalate. Postulated to allosterically modulate the affinity of the S-enantiomer. Racemate and S-enantiomer also available.

**Physical and Chemical Properties:**

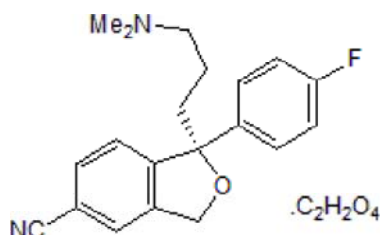
Batch Molecular Formula: C<sub>20</sub>H<sub>21</sub>FN<sub>2</sub>O.C<sub>2</sub>H<sub>2</sub>O<sub>4</sub>

Batch Molecular Weight: 414.43

Physical Appearance: White solid

**Minimum Purity:** >98%

**Batch Molecular Structure:**



**Storage:** Store at +4°C

**Solubility & Usage Info:**

water to 50 mM

DMSO to 100 mM

**Stability and Solubility Advice:**

Some solutions can be difficult to obtain and can be encouraged by rapid stirring, sonication or gentle warming (in a 45-60°C water bath).

Information concerning product stability, particularly in solution, has rarely been reported and in most cases we can only offer a general guide. Our standard recommendations are:

**SOLIDS:** Provided storage is as stated on the product label and the vial is kept tightly sealed, the product can be stored for up to 6 months from date of receipt.

**SOLUTIONS:** We recommend that stock solutions, once prepared, are stored aliquoted in tightly sealed vials at -20°C or below and used within 1 month. Wherever possible solutions should be made up and used on the same day.

**References:**

Jacquot *et al* (2007) Escitalopram and citalopram: the unexpected role of the R-enantiomer. *Encephale* **33** 179. PMID: 17675913.

Sánchez *et al* (2006) The pharmacology of citalopram enantiomers: the antagonism by R-citalopram on the effect of S-citalopram. *Basic & Clinical Pharmacology & Toxicology* **99** 91. PMID: 16918708.

Caution - Not Fully Tested • Research Use Only • Not For Human or Veterinary Use

**bio-techne.com**

info@bio-techne.com

techsupport@bio-techne.com

**North America**

Tel: (800) 343 7475

**China**

info.cn@bio-techne.com

Tel: +86 (21) 52380373

**Europe Middle East Africa**

Tel: +44 (0)1235 529449

**Rest of World**

www.tocris.com/distributors

Tel:+1 612 379 2956