

Product Name: MLi-2

Catalog No.: 5756

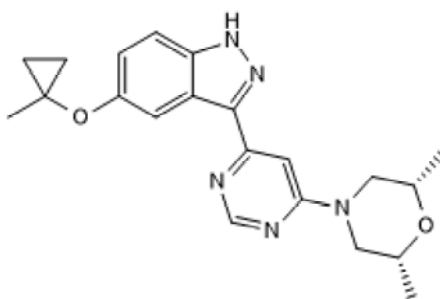
Batch No.: 2

CAS Number: 1627091-47-7

IUPAC Name: *rel*-3-[6-[(2*R*,6*S*)-2,6-Dimethyl-4-morpholinyl]-4-pyrimidyl]-5-[(1-methylcyclopropyl)oxy]-1*H*-indazole

1. PHYSICAL AND CHEMICAL PROPERTIES

Batch Molecular Formula: C₂₁H₂₅N₅O₂
Batch Molecular Weight: 379.46
Physical Appearance: White solid
Solubility: DMSO to 50 mM
Storage: Store at -20°C
Batch Molecular Structure:



2. ANALYTICAL DATA

HPLC: Shows 98.7% purity
¹H NMR: Consistent with structure
Mass Spectrum: Consistent with structure

Microanalysis:

	Carbon	Hydrogen	Nitrogen
Theoretical	66.47	6.64	18.46
Found	66.03	6.71	18.66

Caution - Not Fully Tested • Research Use Only • Not For Human or Veterinary Use

Product Name: MLi-2

Catalog No.: 5756

Batch No.: 2

CAS Number: 1627091-47-7

IUPAC Name: *rel*-3-[6-[(2*R*,6*S*)-2,6-Dimethyl-4-morpholinyl]-4-pyrimidyl]-5-[(1-methylcyclopropyl)oxy]-1*H*-indazole

Description:

MLi-2 is a potent and selective LRRK2 inhibitor (IC₅₀ = 0.76-3.4 nM depending on assay), which exhibits >295-fold selectivity for over 300 kinases and a diverse panel of receptors and ion channels. MLi-2 is centrally bioavailable and active in vivo.

Physical and Chemical Properties:

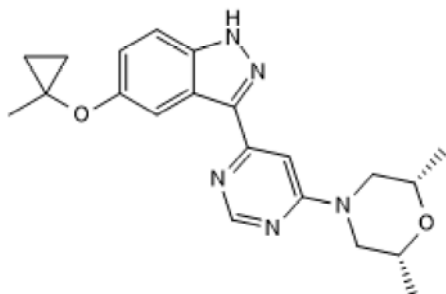
Batch Molecular Formula: C₂₁H₂₅N₅O₂

Batch Molecular Weight: 379.46

Physical Appearance: White solid

Minimum Purity: ≥98%

Batch Molecular Structure:



Storage: Store at -20°C

Solubility & Usage Info:

DMSO to 50 mM

Stability and Solubility Advice:

Some solutions can be difficult to obtain and can be encouraged by rapid stirring, sonication or gentle warming (in a 45-60°C water bath).

Information concerning product stability, particularly in solution, has rarely been reported and in most cases we can only offer a general guide. Our standard recommendations are:

SOLIDS: Provided storage is as stated on the product label and the vial is kept tightly sealed, the product can be stored for up to 6 months from date of receipt.

SOLUTIONS: We recommend that stock solutions, once prepared, are stored aliquoted in tightly sealed vials at -20°C or below and used within 1 month. Wherever possible solutions should be made up and used on the same day.

References:

Fell *et al* (2015) MLi-2, a potent, selective, and centrally active compound for exploring the therapeutic potential and safety of LRRK2 kinase inhibition. *J.Pharmacol.Exp.Ther.* **355** 397. PMID: 26407721.

Caution - Not Fully Tested • Research Use Only • Not For Human or Veterinary Use

bio-techne.com

info@bio-techne.com

techsupport@bio-techne.com

North America

Tel: (800) 343 7475

China

info.cn@bio-techne.com

Tel: +86 (21) 52380373

Europe Middle East Africa

Tel: +44 (0)1235 529449

Rest of World

www.tocris.com/distributors

Tel:+1 612 379 2956